

NARRATIVE

THE PURPOSE OF THIS SURVEY IS TO LOCATE THE EXISTING DLC CORNERS AND SET REFERENCES, AS SHOWN. DETAILED NARRATIVES REGARDING THESE CORNERS ARE SHOWN ON SUBSEQUENT SHEETS.

NOTE

THE LINES BETWEEN THE NORTHWEST CORNER OF DLC 70, THE SOUTHWEST CORNER OF DLC 70 AND THE NORTHWEST CORNER OF DLC 55 WERE MEASURED USING 2 INDEPENDENT OBSERVATIONS WITH GPS REAL TIME KINEMATIC TECHNIQUE AND REDUCED TO GROUND DISTANCES USING A COMBINED SCALE FACTOR OF 0.99988961494.

BASIS OF BEARING IS N 01°43'12" E, OREGON STATE PLANE COORDINATE SYSTEM, NAD 1983 CORS, EPOCH ADJUSTMENT 2002.00, NORTH ZONE, FROM THE SOUTHWEST CORNER OF DLC 70 TO NORTHWEST CORNER OF DLC 70. THIS LINE HAS BEEN ROTATED TO N 00°00'00" E, AS PER THE 1855 GLO SURVEY.

EQUIPMENT AND SPECIFICATIONS USED TO MAKE OBSERVATIONS:

LEICA TPS 1203 TOTAL STATION WITH AN ANGULAR RESOLUTION OF THREE SECONDS, HORIZONTAL AND VERTICAL, DISTANCE TO 2MM +/- 2PPM.

LEICA 1200 GPS SYSTEM WITH RESOLUTION OF 10MM + 2PPM.

STATE PLANE COORDINATES

HORIZONTAL DATUM: NAD 83 (CORS), EPOCH 2002.00  
 BASED ON MARION COUNTY GPS COOPERATIVE CORS CONTROL POINTS MCSO, STAY AND WDBN

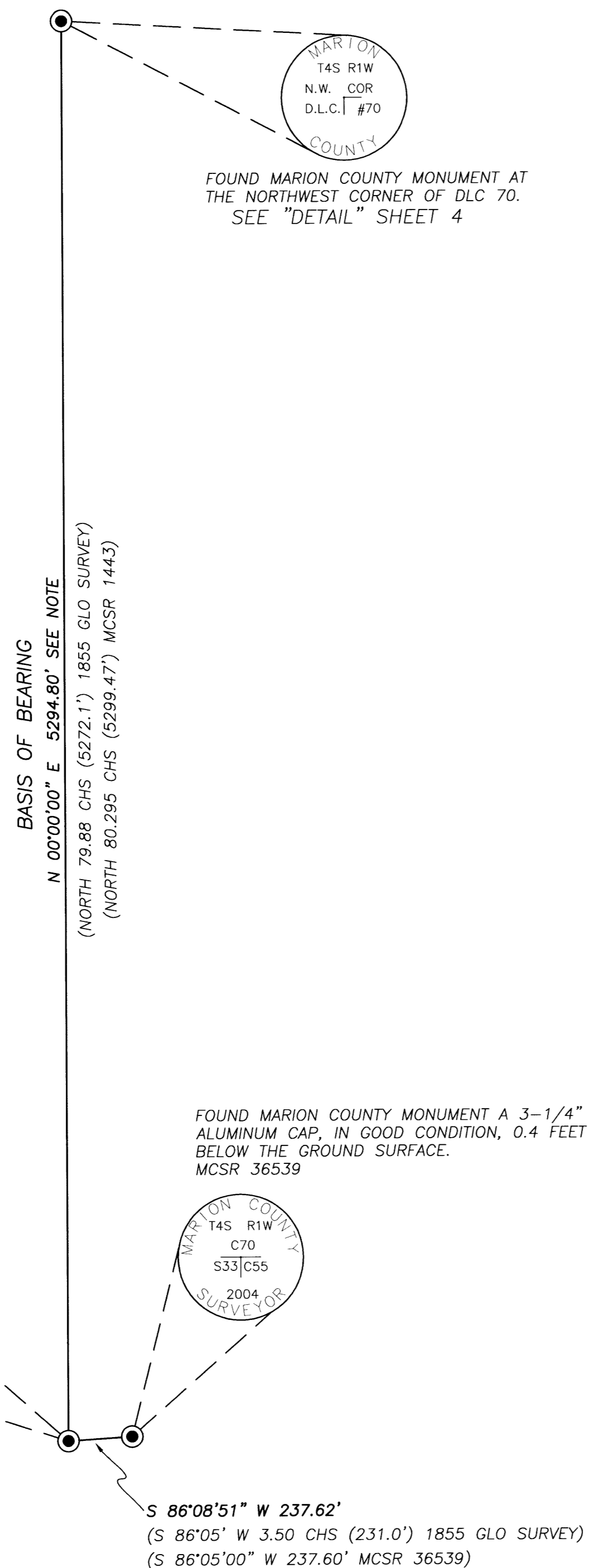
	GRID	ZONE	NORTHING METERS	EASTING METERS
N.W. CORNER OF DLC 70	OREGON NORTH	3601	172116.589	2318122.425
S.W. CORNER OF DLC 70	OREGON NORTH	3601	170503.635	2318073.993
N.W. CORNER OF DLC 55	OREGON NORTH	3601	170506.330	2318146.361

HORIZONTAL ACCURACY: +/- 0.050 METERS RELATIVE TO CONTROL SURVEY NOTED

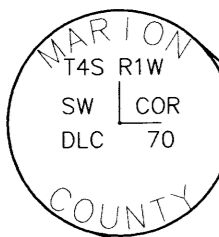
LEGEND

- FOUND MARION COUNTY MONUMENT MARKED AS SHOWN.
- FOUND MONUMENT AS NOTED.
- ( ) = RECORD DATA
- IP= IRON PIPE
- IR= IRON ROD
- IB= IRON BAR
- MCM= MARION COUNTY MONUMENT
- BC= BRASS CAP
- YPC= YELLOW PLASTIC CAP
- MCSR= MARION COUNTY SURVEY RECORD
- MCSO= MARION COUNTY SURVEYORS OFFICE
- FD= FOUND
- EG= EDGE OF GRAVEL
- EP= EDGE OF PAVEMENT
- CL= CENTERLINE
- PP= POWER POLE
- RP= REFERENCE POINT
- FB= FIELD BOOK
- ROW= RIGHT-OF-WAY
- MR= MARKET ROAD
- CR= COUNTY ROAD
- DLC= DONATION LAND CLAIM
- CHS= CHAINS
- LKS= LINKS

SHEET 1 OF 5



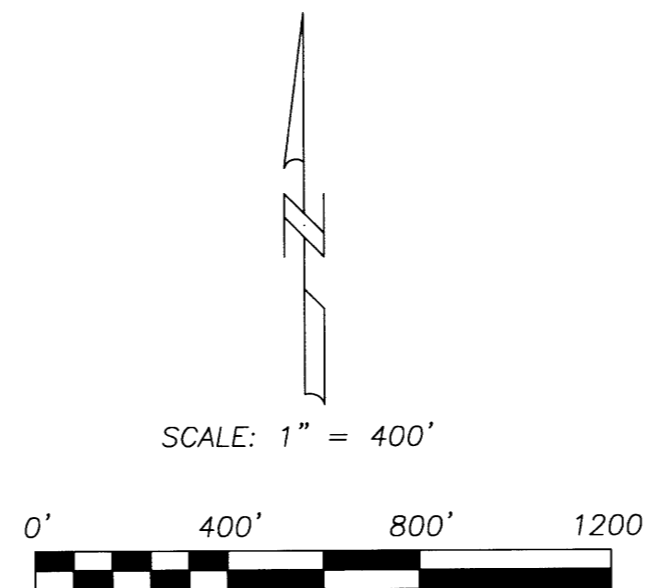
FOUND MARION COUNTY MONUMENT AT THE SOUTHWEST CORNER OF DLC 70. SEE "DETAIL" SHEET 2



FOUND MARION COUNTY MONUMENT A 3-1/4" ALUMINUM CAP, IN GOOD CONDITION, 0.4 FEET BELOW THE GROUND SURFACE. MCSR 36539



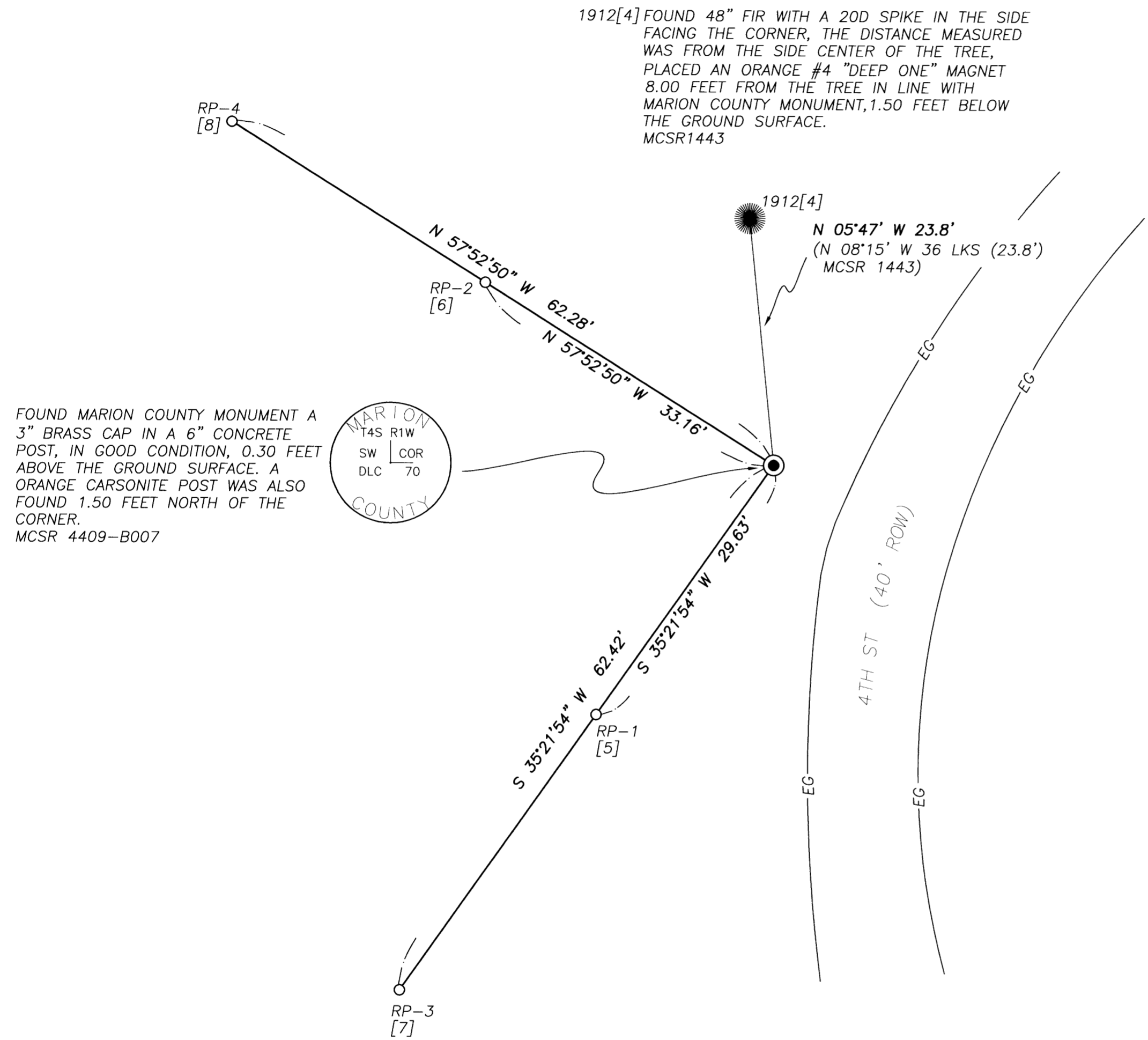
S 86°08'51" W 237.62'  
 (S 86°05' W 3.50 CHS (231.0') 1855 GLO SURVEY)  
 (S 86°05'00" W 237.60' MCSR 36539)



RECEIVED 05/07/2008  
 BY MARION COUNTY SURVEYOR. APPROVED FOR FILING ON 05/19/2008.

<b>SURVEY FOR MARION COUNTY</b>		
SITUATED IN THE EAST 1/2 OF SECTION 33 AND THE SE 1/4 OF SECTION 28, TOWNSHIP 4 SOUTH, RANGE 1 WEST, WILLAMETTE MERIDIAN, MARION COUNTY, OREGON.		
DATE: APRIL 16, 2008	SCALE: 1" = 400'	CREW: WK AND JG
MARION COUNTY SURVEYORS OFFICE 5155 SILVERTON RD. SALEM OR 97305		

REGISTERED PROFESSIONAL LAND SURVEYOR
<i>Mark E. Riggins</i>
OREGON JULY 13, 1979 MARK E. RIGGINS #1857
EXPIRES 12-31-08



NARRATIVE

THE PURPOSE OF THIS SURVEY IS TO PERPETUATE AND SET REFERENCE MONUMENTS TO THE FOUND MONUMENT MARKING THE SOUTHWEST CORNER OF THE CHARLES HUBBARD DLC 70, IN THE SOUTHEAST QUARTER OF SECTION 33, TOWNSHIP 4 SOUTH, RANGE 1 WEST, WILLAMETTE MERIDIAN, MARION COUNTY, OREGON.

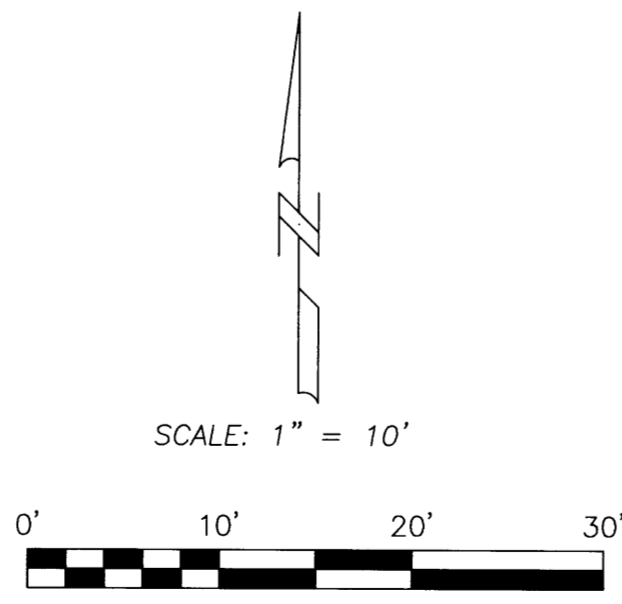
A THOROUGH RESEARCH WAS PERFORMED IN THE MARION COUNTY SURVEYOR'S OFFICE TO OBTAIN ALL FILED SURVEYS AND FIELD NOTES CONTAINING INFORMATION ABOUT THIS CORNER. USING THIS INFORMATION, A FIELD SEARCH WAS MADE TO LOCATE ALL PHYSICAL EVIDENCE OF THIS CORNER AND ITS ACCESSORIES.

IN APRIL OF 2008, THE MARION COUNTY SURVEYOR'S OFFICE FOUND THE MONUMENT SET BY THE MARION COUNTY SURVEYOR'S OFFICE IN MCSR 4409-B007 AND THE BEARING TREE ESTABLISHED BY KNOX IN MCSR 1443, ACCESSORY 1912[4]. REFER TO THE CORNER HISTORY FOR MORE DETAILS.

THE MEASUREMENTS MADE FROM THE SOUTHWEST CORNER OF THE DLC 70 TO THE NORTHWEST CORNER OF DLC 70, THE NORTHWEST CORNER OF DLC 55 AND TO THE BEARING TREE, ACCESSORY 1912[4], COMPARED WELL WITH RECORD MEASUREMENTS. THE MONUMENT WAS ACCEPTED AS MARKING THE SOUTHWEST CORNER OF THE CHARLES HUBBARD DLC 70. MARION COUNTY REFERENCE MONUMENTS WERE SET.

LEGEND

- FOUND MARION COUNTY MONUMENT MARKED AS SHOWN.
- SET 5/8" X 30" REBAR WITH 2" ALUMINUM CAP MARKED "MARION COUNTY SURVEYOR" AND "RP" NUMBER.
- FOUND MONUMENT AS NOTED.
- ( ) = RECORD DATA
- IP= IRON PIPE
- IR= IRON ROD
- IB= IRON BAR
- MCM= MARION COUNTY MONUMENT
- BC= BRASS CAP
- YPC= YELLOW PLASTIC CAP
- MCSR= MARION COUNTY SURVEY RECORD
- MCSO= MARION COUNTY SURVEYORS OFFICE
- FD= FOUND
- EG= EDGE OF GRAVEL
- EP= EDGE OF PAVEMENT
- CL= CENTERLINE
- PP= POWER POLE
- RP= REFERENCE POINT
- FB= FIELD BOOK
- ROW= RIGHT-OF-WAY
- MR= MARKET ROAD
- CR= COUNTY ROAD
- DLC= DONATION LAND CLAIM
- CHS= CHAINS
- LKS= LINKS



SURVEY FOR MARION COUNTY  
SITUATED IN THE SE 1/4 OF SECTION 33,  
TOWNSHIP 4 SOUTH, RANGE 1 WEST,  
WILLAMETTE MERIDIAN, MARION COUNTY, OREGON.

REGISTERED  
PROFESSIONAL  
LAND SURVEYOR

*Mark E. Riggins*

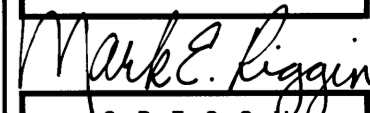
OREGON  
JULY 13, 1979  
MARK E. RIGGINS  
#1857

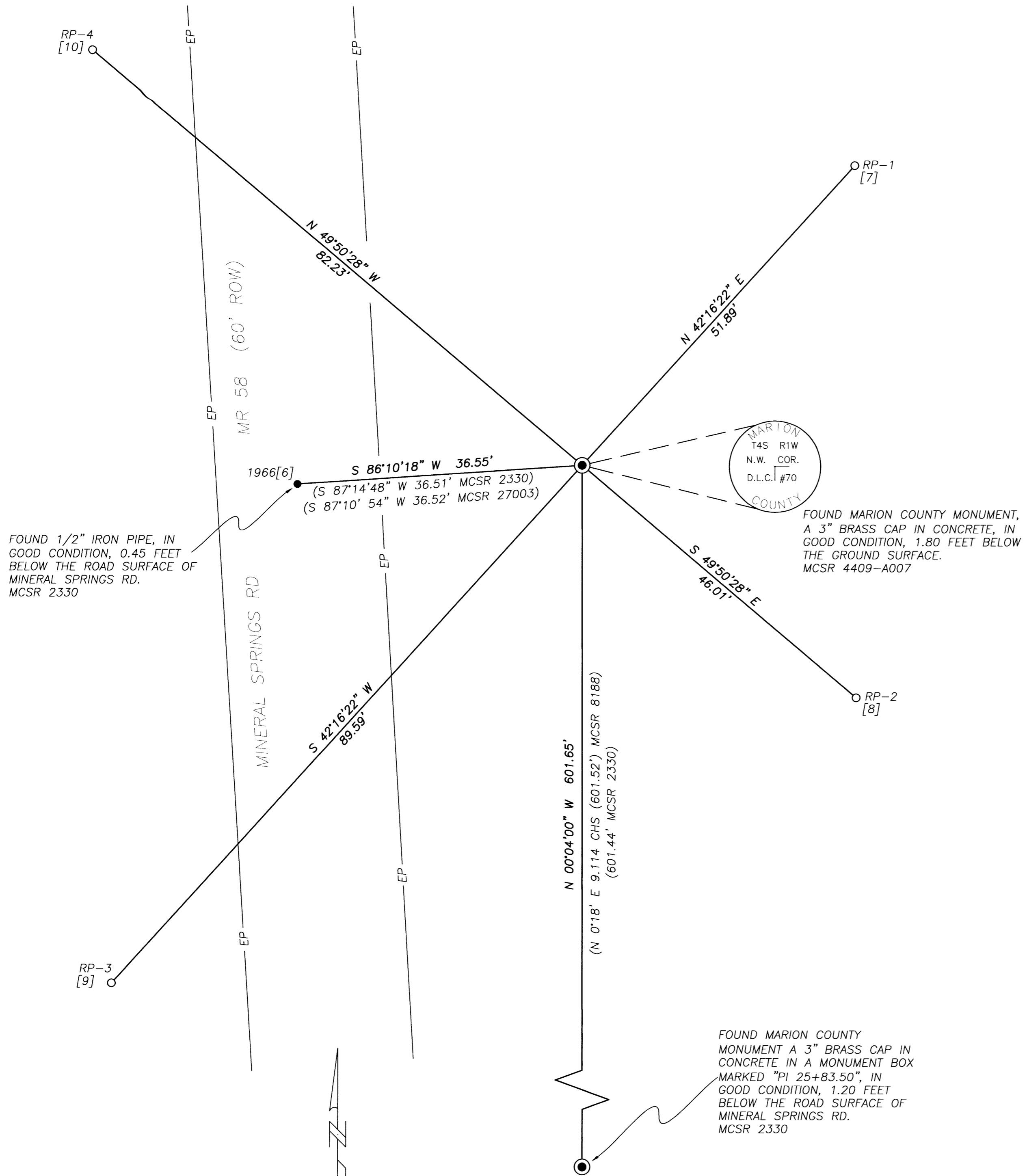
EXPIRES 12-31-08

DATE: APRIL 16, 2008 | SCALE: 1" = 10' | CREW: WK AND JG  
MARION COUNTY SURVEYORS OFFICE 5155 SILVERTON RD. SALEM OR 97305

CORNER HISTORY

DATE	SURVEYOR	RECORD	DATE	SURVEYOR	RECORD
MARCH 09, 1855	SNOWDEN	VOL D-3, PG 94-97	JULY 01, 1981	TRAPP	MCSR 29153A
SET CORNER	STAKE		FOUND CORNER	BRASS CAP	
SET ACCESSORY	[1] 48" FIR BEARS N 54-1/2' E 1.36 CHS (89.8')				
SET ACCESSORY	[2] 56" FIR BEARS N 65-1/2' W 73 LKS (48.2')		NOVEMBER 06, 1990	TRAPP	PARTITION PLAT 1990-74
SET ACCESSORY	[3] 32" FIR BEARS S 10-1/2' W 80 LKS (52.8')		FOUND CORNER	BRASS CAP	
APRIL 17, 1906	HERRICK	MCSR 5228A	DECEMBER 21, 1993	NETTLETON	MCSR 33538
FOUND CORNER	NOT IDENTIFIED		FOUND CORNER	BRASS CAP	
			FOUND ACCESSORY	1912[4] 36" FIR BEARS N 8-1/4' W 23.8'	
DECEMBER 19, 1912	KNOX	MCSR 1443	OCTOBER 26, 1998	PELSE	MCSR 34782
SET CORNER	1/4" X 2" X 15" IRON BAR		FOUND CORNER	3" BRASS CAP	
SET ACCESSORY	[4] 8" FIR BEARS N 8-1/4' W 36 LKS (23.8'), MARKED "C.S. C70 B.T."				
DECEMBER 23, 1912	KNOX	MCSR 5745	SEPTEMBER 08, 1999	PELSE	VOL 43, PG 55, BOOK OF TOWN PLATS
FOUND CORNER	IRON BAR		FOUND CORNER	3" BRASS CAP	
DECEMBER 24, 1912	KNOX	MCSR 5746	MARCH 21, 2000	PUMPHREY	MCSR 35375
FOUND CORNER	IRON BAR		FOUND CORNER	3" BRASS CAP	
OCTOBER 21, 1913	KNOX	MCSR 5826	MAY 29, 2001	THOMAS	PARTITION PLAT 2001-49
FOUND CORNER	NOT IDENTIFIED		FOUND CORNER	3" BRASS CAP	
OCTOBER 21, 1913	KNOX	MCSR 34442	MAY 03, 2004	RIGGINS	MCSR 36539
FOUND CORNER	NOT IDENTIFIED		FOUND CORNER	3" BRASS CAP	
NOVEMBER 20, 1913	KNOX	MCSR 34441	APRIL 16, 2008	RIGGINS	FB 1172, PG 28-30, FB 1169, PG 46-48
FOUND CORNER	NOT IDENTIFIED		FOUND CORNER	MARION COUNTY MONUMENT A 3" BRASS CAP IN A 6" CONCRETE POST, IN GOOD CONDITION, 0.30' ABOVE THE GROUND SURFACE. A ORANGE CARSONITE POST WAS ALSO FOUND 1.50' NORTH OF THE CORNER.	
AUGUST 01, 1930	KNOX	MCSR 5825	FOUND ACCESSORY	1912[4] 48" FIR WITH A 20D SPIKE IN THE SIDE FACING THE CORNER, BEARS N 05'47" W 23.8', THE DISTANCE MEASURED WAS FROM THE SIDE CENTER OF THE TREE, PLACED AN ORANGE #4 "DEEP ONE" MAGNET 8.00' FROM THE TREE IN LINE WITH MARION COUNTY MONUMENT, 1.50' BELOW THE GROUND SURFACE.	
FOUND CORNER	NOT IDENTIFIED				
AUGUST 31, 1931	MCGEE	MCSR 2357	SET ACCESSORY	[5] 2" ALUMINUM CAP ON TOP OF 5/8" X 30" REBAR, CAP STAMPED "MARION COUNTY SURVEYOR RP-1" BEARS S 35'21'54" E 29.63', SET 2.00' BELOW THE GROUND SURFACE	
FOUND CORNER	NOT IDENTIFIED				
SET CORNER	CO. MON. 3-13-74 SHOWN ON THIS MAP		SET ACCESSORY	[6] 2" ALUMINUM CAP ON TOP OF 5/8" X 30" REBAR, CAP STAMPED "MARION COUNTY SURVEYOR RP-2" BEARS N 57'52'50" W 33.16', SET 2.00' BELOW THE GROUND SURFACE	
JULY 30, 1976	JONES	MCSR 25593	SET ACCESSORY	[7] 2" ALUMINUM CAP ON TOP OF 5/8" X 30" REBAR, CAP STAMPED "MARION COUNTY SURVEYOR RP-3" BEARS S 35'21'54" W 62.42', SET 2.00' BELOW THE GROUND SURFACE	
FOUND CORNER	COUNTY MON		SET ACCESSORY	[8] 2" ALUMINUM CAP ON TOP OF 5/8" X 30" REBAR, CAP STAMPED "MARION COUNTY SURVEYOR RP-4" BEARS N 57'52'50" W 62.28', SET 2.00' BELOW THE GROUND SURFACE	
AUGUST 21, 1979	QUERY	VOL 36, PG 1, BOOK OF TOWN PLATS			
FOUND CORNER	BRASS CAP				
FEBRUARY 27, 1981	TRAPP	MCSR 28861			
FOUND CORNER	BRASS CAP				

SURVEY FOR MARION COUNTY  SITUATED IN THE SE 1/4 OF SECTION 33, TOWNSHIP 4 SOUTH, RANGE 1 WEST, WILLAMETTE MERIDIAN, MARION COUNTY, OREGON.			REGISTERED PROFESSIONAL LAND SURVEYOR   OREGON JULY 13, 1979 MARK E. RIGGINS #1857 EXPIRES 12-31-08
DATE: APRIL 16, 2008	SCALE: N/A	CREW: WK AND JG	
MARION COUNTY SURVEYORS OFFICE 5155 SILVERTON RD. SALEM OR 97305			



NARRATIVE

THE PURPOSE OF THIS SURVEY IS TO PERPETUATE AND SET REFERENCE MONUMENTS TO THE FOUND MONUMENT MARKING THE NORTHWEST CORNER OF THE CHARLES HUBBARD DLC 70, IN THE SOUTHEAST QUARTER OF SECTION 28, TOWNSHIP 4 SOUTH, RANGE 1 WEST, WILLAMETTE MERIDIAN, MARION COUNTY, OREGON.

A THOROUGH RESEARCH WAS PERFORMED IN THE MARION COUNTY SURVEYOR'S OFFICE TO OBTAIN ALL FILED SURVEYS AND FIELD NOTES CONTAINING INFORMATION ABOUT THIS CORNER. USING THIS INFORMATION, A FIELD SEARCH WAS MADE TO LOCATE ALL PHYSICAL EVIDENCE OF THIS CORNER AND ITS ACCESSORIES.

IN APRIL OF 2008, THE MARION COUNTY SURVEYOR'S OFFICE FOUND THE MONUMENT SET BY THE MARION COUNTY SURVEYOR'S OFFICE IN MCSR 4409-A007 AND THE IRON PIPE SET BY GRAHAM IN MCSR 2330, ACCESSORY 1966[6]. REFER TO THE CORNER HISTORY FOR MORE DETAILS.

THE MEASUREMENTS MADE FROM THE NORTHWEST CORNER OF THE DLC 70 TO THE SOUTHWEST CORNER OF DLC 70, THE IRON PIPE, ACCESSORY 1966[6] AND THE MARION COUNTY MONUMENT AT THE PI STA 25+83.50 OF MINERAL SPRINGS RD TO THE SOUTH, COMPARED WELL WITH RECORD MEASUREMENTS. THE MONUMENT WAS ACCEPTED AS MARKING THE NORTHWEST CORNER OF THE CHARLES HUBBARD DLC 70. MARION COUNTY REFERENCE MONUMENTS WERE SET.

LEGEND

- FOUND MARION COUNTY MONUMENT MARKED AS SHOWN.
- SET 5/8" X 30" REBAR WITH 2" ALUMINUM CAP MARKED "MARION COUNTY SURVEYOR" AND "RP" NUMBER.
- FOUND MONUMENT AS NOTED.
- ( )= RECORD DATA
- IP= IRON PIPE
- IR= IRON ROD
- IB= IRON BAR
- MCM= MARION COUNTY MONUMENT
- BC= BRASS CAP
- YPC= YELLOW PLASTIC CAP
- MCSR= MARION COUNTY SURVEY RECORD
- MCSO= MARION COUNTY SURVEYORS OFFICE
- FD= FOUND
- EG= EDGE OF GRAVEL
- EP= EDGE OF PAVEMENT
- CL= CENTERLINE
- PP= POWER POLE
- RP= REFERENCE POINT
- FB= FIELD BOOK
- ROW= RIGHT-OF-WAY
- MR= MARKET ROAD
- CR= COUNTY ROAD
- DLC= DONATION LAND CLAIM
- CHS= CHAINS
- LKS= LINKS

SHEET 4 OF 5

SURVEY FOR MARION COUNTY

SITUATED IN THE SE 1/4 OF SECTION 28,  
TOWNSHIP 4 SOUTH, RANGE 1 WEST,  
WILLAMETTE MERIDIAN, MARION COUNTY, OREGON.

REGISTERED  
PROFESSIONAL  
LAND SURVEYOR

*Mark E. Riggins*  
10 REGO 00  
JULY 13, 1979  
MARK E. RIGGINS  
#1857

DATE: APRIL 16, 2008 SCALE: 1" = 10' CREW: WK AND JG

MARION COUNTY SURVEYORS OFFICE 5155 SILVERTON RD. SALEM OR 97305

EXPIRES 12-31-08

CORNER HISTORY

DATE	SURVEYOR	RECORD	DATE	SURVEYOR	RECORD
MARCH 09, 1855	SNOWDEN	VOL D-3, PG 11/95	MAY 31, 1951	FERGUSON	MCSR 13066
SET CORNER	STAKE		FOUND CORNER	I.B.	
SET ACCESSORY	[1] 36" FIR BEARS S 47-1/2' E 1.13 CHS (74.6')				
SET ACCESSORY	[2] 16" OAK BEARS N 30-1/2' E 1.85 CHS (122.1')		DATE	SURVEYOR	RECORD
SET ACCESSORY	[3] 26" OAK BEARS N 23-3/4' W 1.54 CHS (101.6')		JULY 03, 1953	FERGUSON	MCSR 13843
			FOUND CORNER	I.B.	
DATE	SURVEYOR	RECORD	DATE	SURVEYOR	RECORD
DECEMBER 19, 1912	KNOX	MCSR 1443/ FB 173, PG 62	AUGUST 17, 1953	FERGUSON	MCSR 13887
FOUND ACCESSORY	[1] 36" FIR BEARS S 47-1/2' E 1.13 CHS (74.6')		FOUND CORNER	I.B.	
	"DOWN AND MARKED"				
FOUND ACCESSORY	[2] 16" OAK STUMP BEARS N 30-1/2' E 1.85 CHS (122.1') "MARKS GONE"		DATE	SURVEYOR	RECORD
SET CORNER	3/8" X 1-1/2" X 15" IRON BAR		MARCH 01, 1966	GRAHAM	MCSR 2330
SET ACCESSORY	[4] 3" FIR BEARS N 40'15" E 22.2 LKS (14.7')		FOUND CORNER	DAMAGED I.B.	
SET ACCESSORY	[5] 5" OAK BEARS S 25' W 45 LKS (29.7')		SET ACCESSORY	[6] 1/2" IRON PIPE BEARS S 87'14'48" W 36.51'	
DATE	SURVEYOR	RECORD	DATE	SURVEYOR	RECORD
DECEMBER 11, 1915	KNOX	MCSR 6063/ FB 176, PG 136	MARCH 12, 1974	MCSO	MCSR 4409-A007
FOUND CORNER	IRON BAR		FOUND CORNER	I.B.	
			SET CORNER	2" X 36" I.P. WITH BRASS CAP 1.30' DEEP	
DATE	SURVEYOR	RECORD	DATE	SURVEYOR	RECORD
DECEMBER 29, 1915	CUTLER	MCSR 6068A	MAY 12, 1978	SHULL	MCSR 27003
FOUND CORNER	I.B.		FOUND CORNER	MCM	
			FOUND ACCESSORY	1966[6] 3/4" PIPE BEARS S 87'10'54" E 36.52'	
DATE	SURVEYOR	RECORD	DATE	SURVEYOR	RECORD
AUGUST 05, 1918	HERRICK	MCSR 6202A	JANUARY 13, 1994	NETTLETON	MCSR 33536
FOUND CORNER	I.B.		FOUND CORNER	BRASS CAP	
			FOUND ACCESSORY	[6] 1/2" I.P. BEARS WEST 36.5'	
DATE	SURVEYOR	RECORD	DATE	SURVEYOR	RECORD
MAY 01, 1924	KNOX	MCSR 6805	MARCH 21, 2001	FIELDING	MCSR 35729
FOUND CORNER	I.B.		FOUND CORNER	3" BRASS CAP 14" DEEP	
DATE	SURVEYOR	RECORD	DATE	SURVEYOR	RECORD
MARCH 21, 1925	KNOX	MCSR 6900/ FB 187, PG 126	APRIL 16, 2008	RIGGINS	FB 1172, PG 21-24, FB 1169, PG 37-39
FOUND CORNER	I.B.		FOUND CORNER	MARION COUNTY MONUMENT, A 3" BRASS CAP IN CONCRETE, IN GOOD CONDITION, 1.80' BELOW THE GROUND SURFACE.	
DATE	SURVEYOR	RECORD	FOUND ACCESSORY	1966[6] 1/2" IRON PIPE, IN GOOD CONDITION, 0.45' BELOW THE ROAD SURFACE OF MINERAL SPRINGS RD, BEARS S 86'10'18" W 36.55'.	
AUGUST 24, 1925	KNOX	MCSR 6963/ FB 188, PG 8	SET ACCESSORY	[7] 2" ALUMINUM CAP ON TOP OF 5/8" X 30" REBAR, CAP STAMPED "MARION COUNTY SURVEYOR RP-1" BEARS N 42'16'22" E 51.89', SET 2.00' BELOW THE GROUND SURFACE	
FOUND CORNER	IRON BAR		SET ACCESSORY	[8] 2" ALUMINUM CAP ON TOP OF 5/8" X 30" REBAR, CAP STAMPED "MARION COUNTY SURVEYOR RP-2" BEARS S 49'50'28" E 46.01', SET 2.00' BELOW THE GROUND SURFACE	
DATE	SURVEYOR	RECORD	SET ACCESSORY	[9] 2" ALUMINUM CAP ON TOP OF 5/8" X 30" REBAR, CAP STAMPED "MARION COUNTY SURVEYOR RP-3" BEARS S 42'16'22" W 89.59', SET 2.00' BELOW THE GROUND SURFACE	
APRIL 25, 1935	KNOX	MCSR 8188/ FB 199, PG 8	SET ACCESSORY	[10] 2" ALUMINUM CAP ON TOP OF 5/8" X 30" REBAR, CAP STAMPED "MARION COUNTY SURVEYOR RP-4" BEARS N 49'50'28" W 82.23', SET 2.00' BELOW THE GROUND SURFACE	
FOUND CORNER	I.B.				
DATE	SURVEYOR	RECORD			
DECEMBER 18, 1939	KNOX	MCSR 9008			
FOUND CORNER	I.B.				
DATE	SURVEYOR	RECORD			
APRIL 29, 1947	SIMMS	MCSR 11056			
FOUND CORNER	IRON BAR				
DATE	SURVEYOR	RECORD			
JULY 01, 1948	SIMMS	MCSR 11805			
FOUND CORNER	I.B.				

SURVEY FOR MARION COUNTY SITUATED IN THE SE 1/4 OF SECTION 28, TOWNSHIP 4 SOUTH, RANGE 1 WEST, WILLAMETTE MERIDIAN, MARION COUNTY, OREGON.			REGISTERED PROFESSIONAL LAND SURVEYOR <i>Mark E. Riggins</i> OREGON JULY 13, 1979 MARK E. RIGGINS #1857 EXPIRES 12-31-08
DATE: APRIL 16, 2008	SCALE: N/A	CREW: WK AND JG	
MARION COUNTY SURVEYORS OFFICE 5155 SILVERTON RD. SALEM OR 97305			