

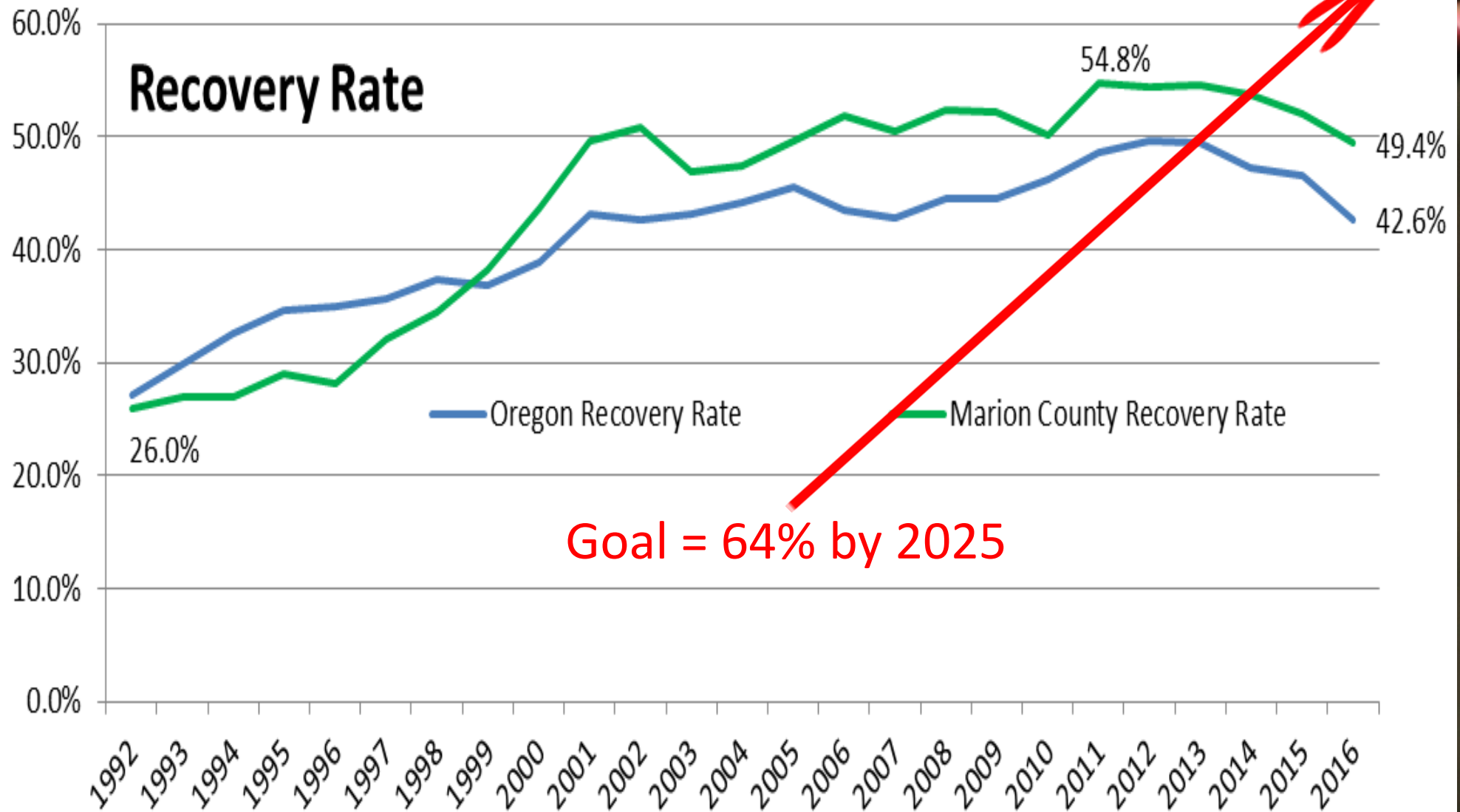
Marion County 2016 Recovery Rate



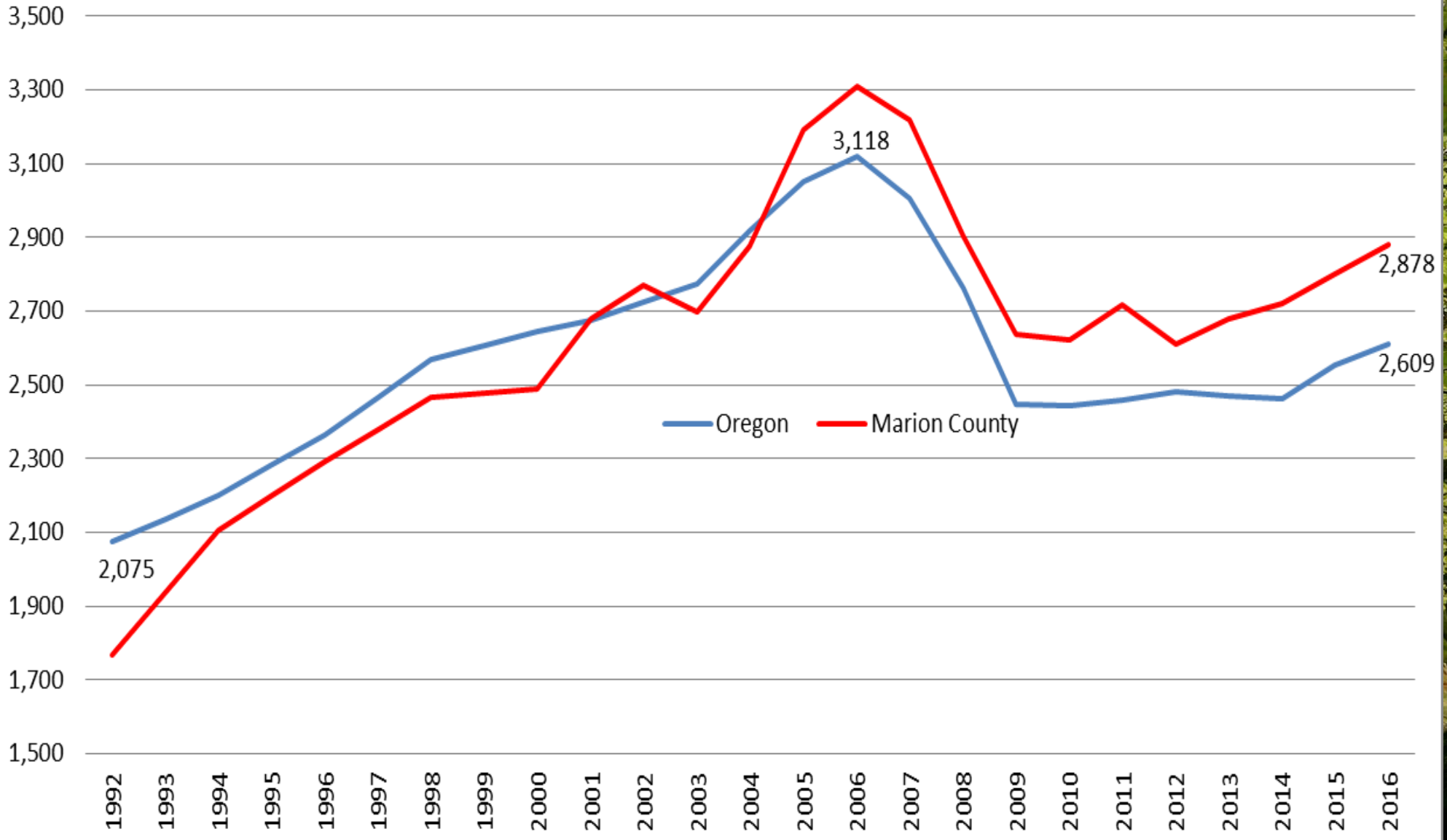
Annual Opportunity to Recycle Report

- DEQ sends surveys to all haulers, private recyclers, cities, counties, material recovery facilities, composters, mills, etc.
- Haulers and Marion County also report what outreach activities and programs were done in the prior year.
- In Marion County alone, they survey about 100 companies/organizations (although not all are located within Marion County).
- Once compiled, DEQ reports the tons collected within each county (aka “wasteshed”) in aggregate and broken down by material type.
- Results are typically reported in November of the following year.

Recovery Rate = Recycling + Composting
÷ Generation (disposal + recycling + composting)



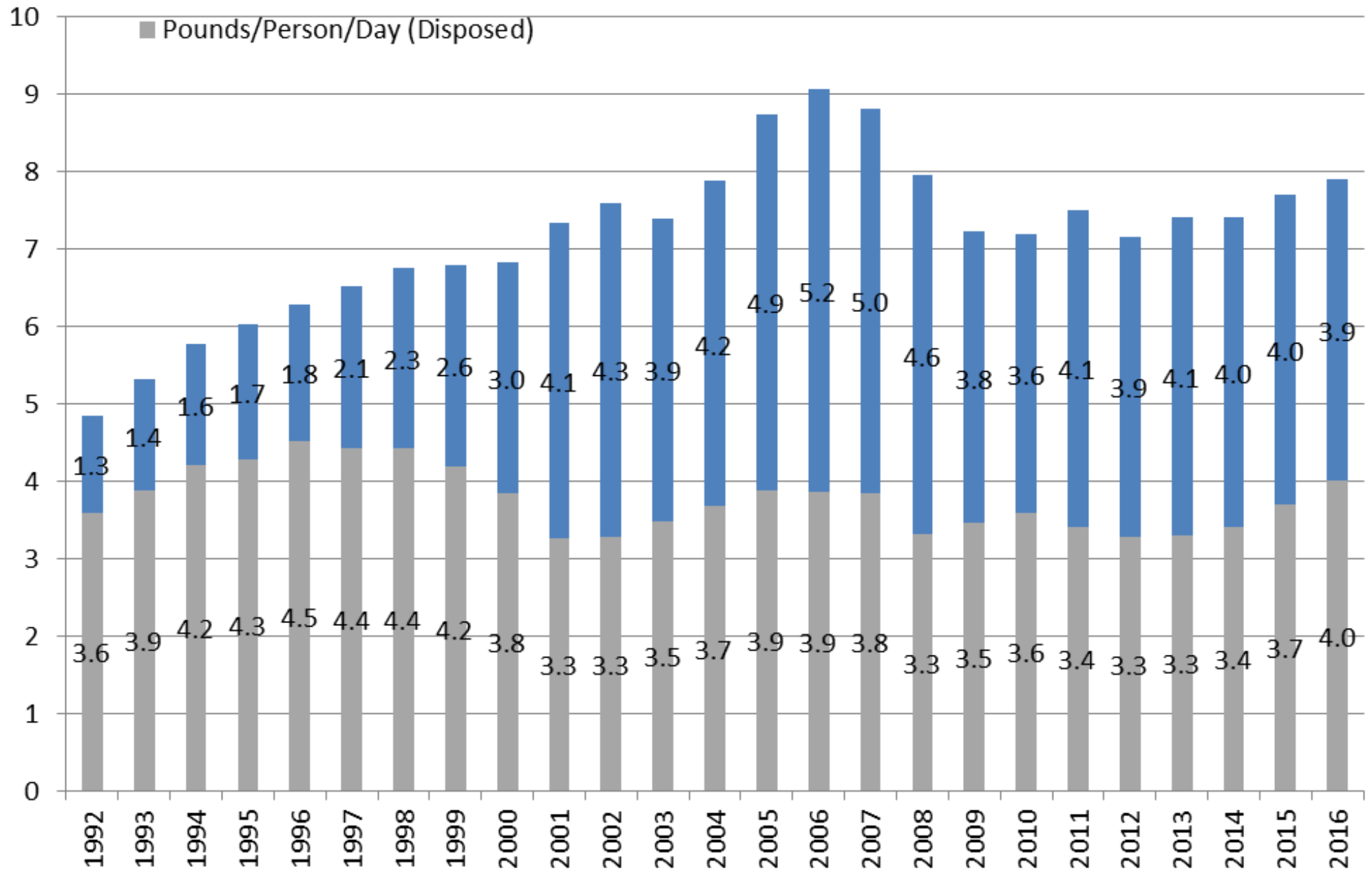
Per Capita Waste Generation



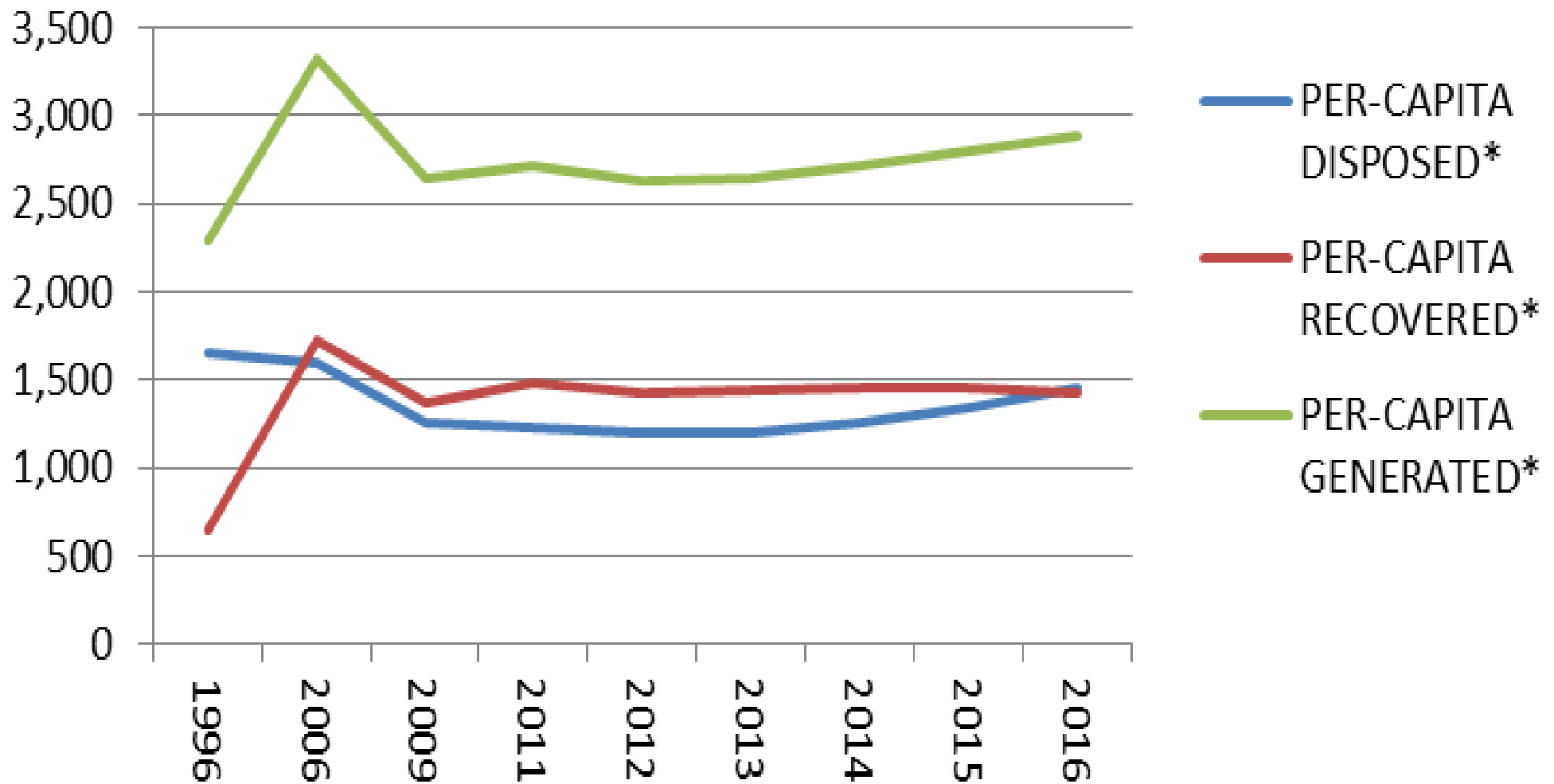
Marion County

■ Pounds/Person/Day (Recovered)

■ Pounds/Person/Day (Disposed)



Marion County Recovery, Disposal & Generation



DRAFT Recovered Materials, Last Three Years

Wasteshed:	Marion			
Material	Tons2014	Tons2015	Tons2016	MORE TONS RECOVERED IN 2016
Aluminum	2,793.391	2,171.888	3,006.523	835 ←
Animal Waste/grease	677.752	935.795	1,243.856	308
Antifreeze	204.691	212.411	197.635	(15)
Cardboard/Kraft	25,877.642	24,021.630	25,107.318	1,086 ←
Composite Plastic	38.480	40.300	36.400	(4)
Diesel	33.430	33.770	33.270	(1)
Electronics	2,505.722	2,465.573	2,640.177	175
Fluorescent Lamps	14.177	12.350	6.555	(6)
Food Waste	3,387.555	2,959.433	4,094.405	1,135 ←
Glass Containers	7,080.255	6,531.459	6,175.294	(356)
Gypsum Wallboard	18.200	13.000	15.600	3
Household Haz Waste	-	-	0.217	0
Lead Acid Batteries	629.951	715.747	789.233	73
Mercury	0.037	0.003	-	(0)
Mixed Batteries	135.937	118.879	119.052	0

DRAFT Recovered Materials, Last Three Years				
Wasteshed:	Marion			
Material	Tons2014	Tons2015	Tons2016	MORE TONS RECOVERED IN 2016
Paint	349.422	468.003	408.961	(59)
Paper Fiber	22,331.282	21,505.050	19,109.018	(2,396)
Plastic Film	1,985.100	1,746.733	1,874.506	128
Plastic Other	1,228.967	1,509.979	1,505.573	(4)
Rigid Plastic Cont.	2,715.441	2,714.086	2,729.729	16
Roofing - Asphalt	29.900	32.500	31.200	(1)
Scrap Metal - Other	68,491.137	63,114.817	48,347.662	(14,767)
Solvents	4.568	4.268	1.739	(3)
Textiles	57.460	45.329	42.731	(3)
Tinned Cans	679.897	673.638	714.940	41
Tires	2,669.344	3,406.330	3,895.773	489
Used Motor Oil	3,826.225	3,197.618	3,215.738	18
Wood Waste	41,643.955	45,173.105	53,486.336	8,313
Yard Debris	49,011.662	56,634.089	54,078.110	(2,556)
Total Recovery	238,421.580	240,457.783	232,907.551	(7,550)
2016 Disposal	225,938.780	243,485.559	263,048.909	
Less HB3744			12,481.540	
Less SCM recovery			8,529.430	
Adjusted 2016 disposal			242,037.939	
2016 Calculated Rate			49.0%	

A close-up photograph of several green fern fronds. The fronds are covered in small, brown, circular spores, which are arranged in rows along the veins of the leaves. The background is a soft, out-of-focus light green and white.

Bailey Payne

Public Works – Environmental Services

(503) 365-3191

bpayne@co.marion.or.us