



Vaccination Status for Marion County

Data from the ALERT IIS as of May 30, 2021

The data in this report comes from the ALERT Immunization Information System (ALERT IIS), which is the immunization registry for the State of Oregon. The data includes *only* those people who are residents of Marion County, and not all vaccinations that take place within the county. Population estimates for the county are from PSU Population Research Center; those for demographic characteristics are obtained from the US Census American Community Survey (ACS) 2019 5-year estimates.

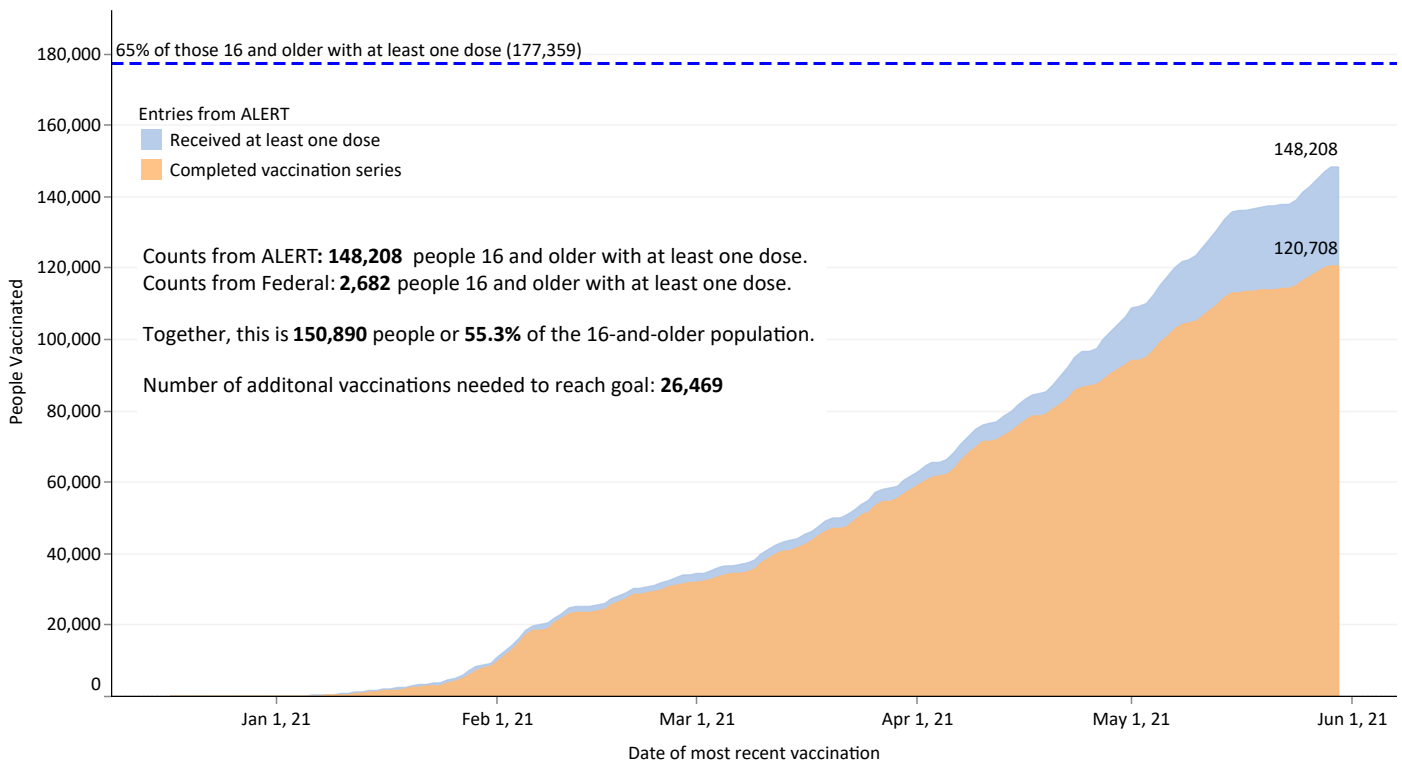
The table below displays the current and monthly level of dose administration to all eligible people. The chart displays the County's progress towards its vaccination goal of a minimum of 65% of the population 16 and older having received at least one dose of a vaccine. As of May 25, the chart text includes counts for those 16 and older immunized by Federal agencies.

Note that the number of people with an incomplete vaccination status is transitory, as those people will move into the Completed Series category as they become eligible for, and received, their second dose. The number of those fully vaccinated, defined as persons who are 14 or more days out from completing their vaccination series, are recorded as of June 2, 2021.

Vaccination Status (all eligible people)

		Doses administered	People with at least one dose	% People with at least one dose	Vaccination series is incomplete	% Vaccination series incomplete	Vaccination series is complete	% Completed vaccination series	People fully vaccinated	% Fully vaccinated
2020	Dec	4,412	4,411	1.3%	4,407	1.3%	4	0.0%	4	0.0%
	Jan	36,621	32,624	9.3%	24,433	7.0%	8,191	2.3%	8,191	2.3%
	Feb	43,098	42,293	12.1%	18,630	5.3%	23,663	6.8%	23,663	6.8%
2021	Mar	58,089	51,980	14.9%	25,830	7.4%	26,150	7.5%	26,150	7.5%
	Apr	73,430	66,581	19.1%	31,586	9.0%	34,995	10.0%	34,995	10.0%
	May	47,266	44,170	12.7%	16,460	4.7%	27,710	7.9%	20,882	6.0%
Totals as of 5/30		262,916	150,461	43.1%	29,748	8.5%	120,713	34.6%	113,885	32.6%
Fully vac. as of 6/2										

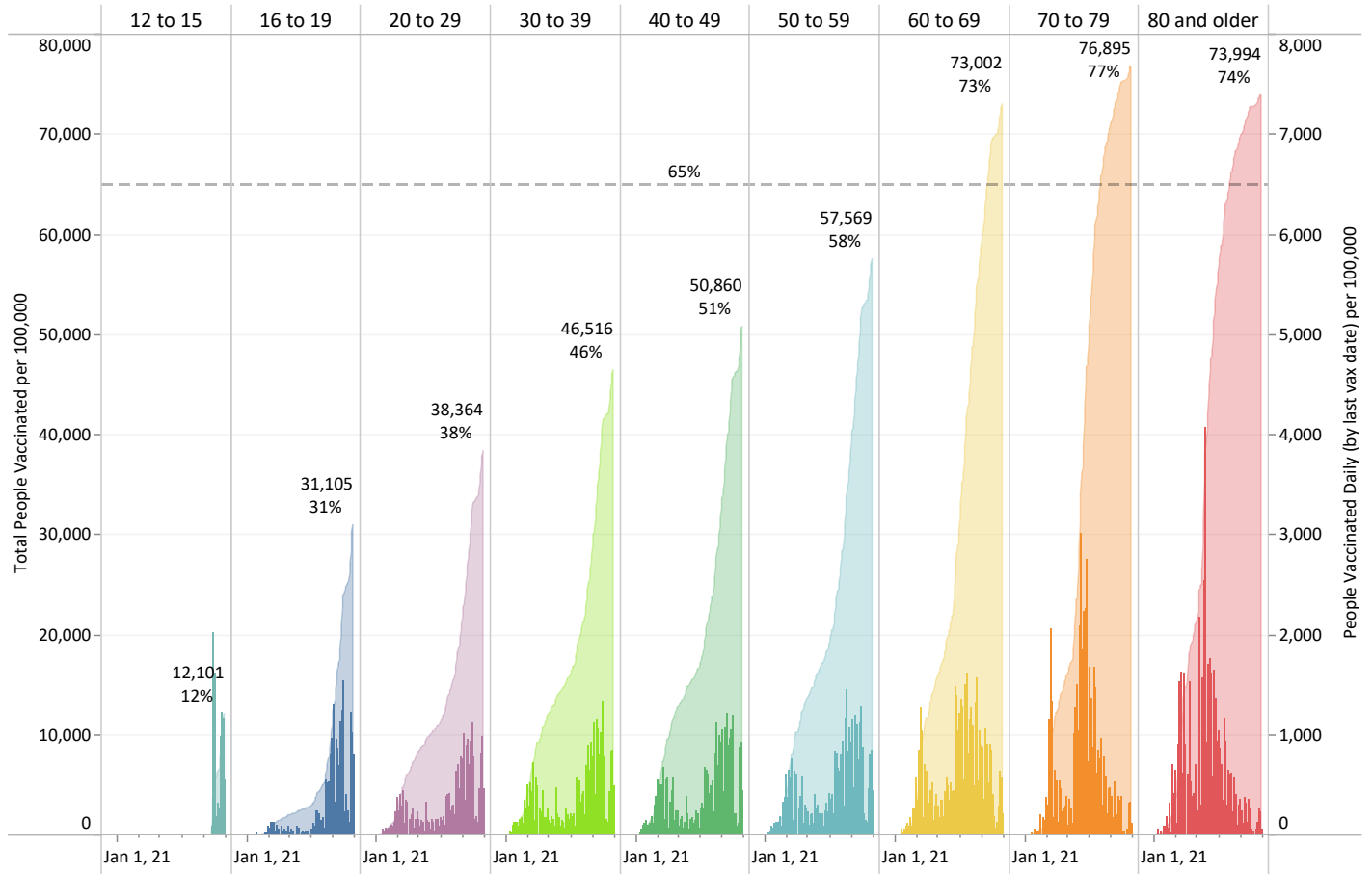
Progress Towards Vaccination Goal (for population 16 and older)



Vaccination Levels by Age Group

The chart below uses rate calculations to compare the the cumulative number people vaccinated and daily vaccinations among age groups. Counts are plotted based on the date of the person's last vaccination. The table at the bottom of the page shows cumulative counts for doses administered, and the number of partial, complete and fully vaccinated people by age groups for Marion County, along with the number of people who must still be vaccinate..

Cumulative and Daily Distribution of Vaccinations (last vax date)



Vaccination Status by Age Group

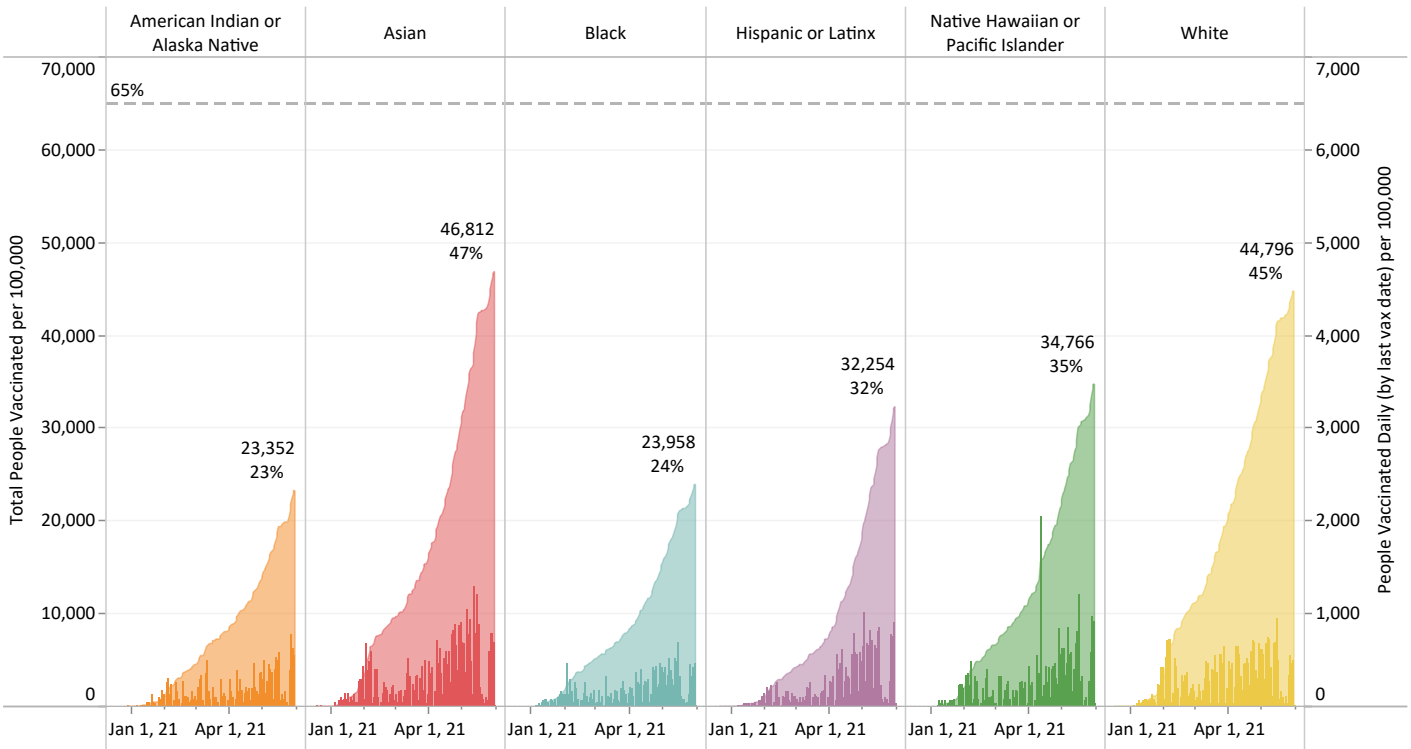
	Doses administered	People with at least one dose	People with completed vaccinations	Fully vaccinated people	People needed to meet target
12 to 15	2,254	2,253	5	5	9,849
16 to 19	9,434	6,051	3,584	2,998	6,491
20 to 29	29,644	17,981	12,724	11,452	12,354
30 to 39	35,672	21,055	15,995	14,782	8,210
40 to 49	37,682	22,063	17,283	15,952	5,999
50 to 59	41,101	23,691	19,151	17,890	2,915
60 to 69	49,678	27,469	23,887	23,083	0
70 to 79	37,937	20,247	18,591	18,336	0
80 and older	19,508	10,407	9,490	9,384	0

Vaccination Levels by Race/Ethnicity

The chart and table are a companion to the previous Age Group page, showing cumulative and daily (last vax date) rates of vaccination, while the table shows counts, including the number of people needed in each race category for it reach the 65% threshold. These values are for all people in the population, as estimates of age by race are error-prone.

For the percentage calculation, numerators are computed using rarest race methodology, where people are assigned into a single race/ethnicity category based on rarity in the population. For Marion County, the rarest to most common race categories are: Native Hawaiian or Pacific Islander, Black, Asian, American Indian/Alaskan Native, Hispanic, and White. The denominators are taken directly from the Oregon Health Authority.

Cumulative and Daily Distribution of Vaccinations (last vax date)



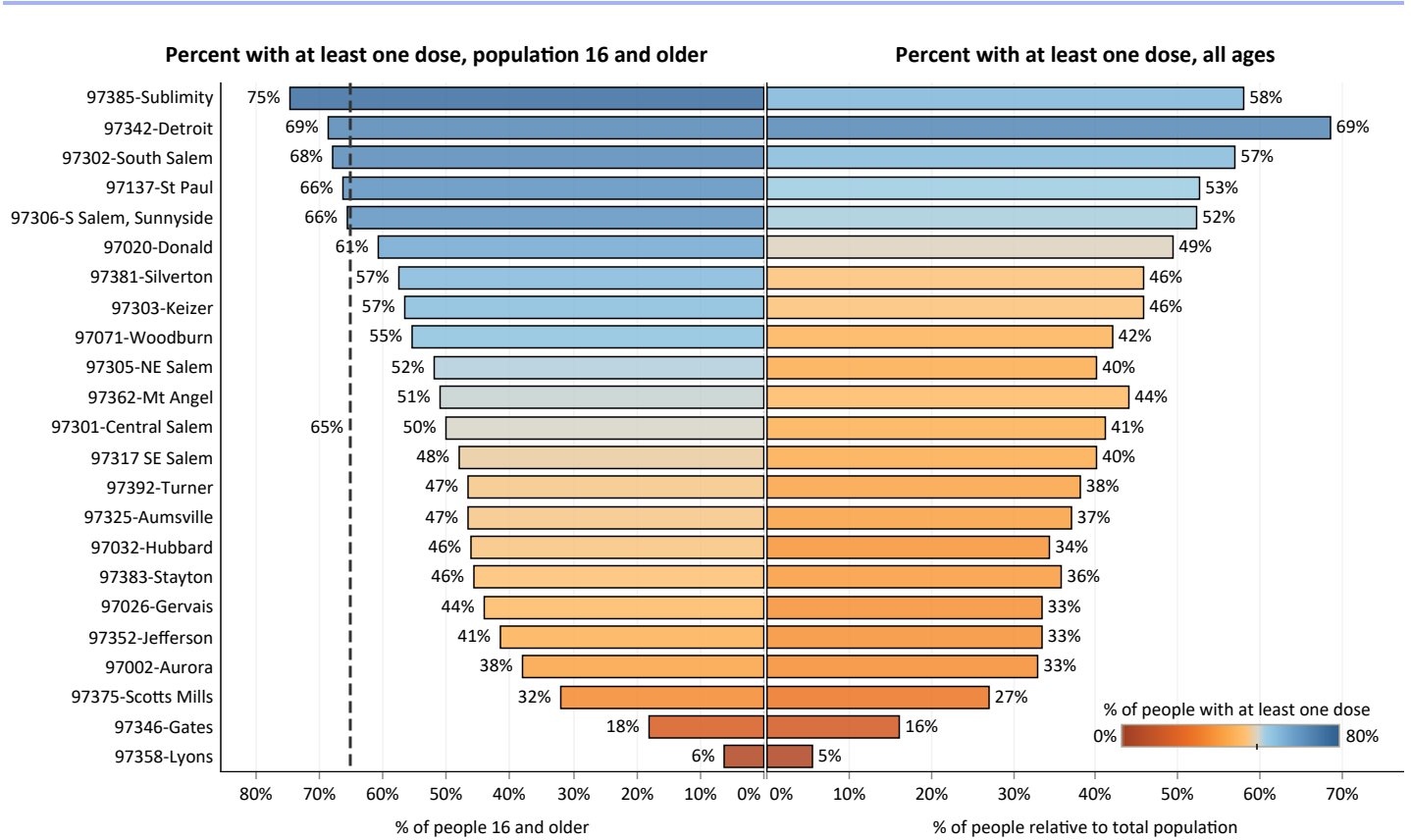
Note: There are 10,570 people who did not specify a race or ethnicity. This is 3.0% of the County's population.

Vaccination Status by Race/Ethnicity

Race/Ethnicity	Doses administered	People with at least one dose	People with completed vaccinations	People Fully Vaccinated	People needed to meet 65% threshold in each race category
American Indian or Alaska Native	6,658	4,027	2,873	2,648	7,165
Asian	8,020	4,583	3,647	3,445	1,768
Black	2,888	1,740	1,260	1,178	2,984
Native Hawaiian or Pacific Islander	2,880	1,729	1,272	1,190	1,507
White	182,368	102,403	84,988	81,114	45,970
Unknown	17,313	10,570	7,643	7,154	0

Zip Code Area

The chart below compares two estimates of vaccination status by zip code area: to the left are the results for the 16 and older population and to the right that for the entire population. Please note that several of the zip codes extend past the county line and so include non-county residence in the count. These areas do not include large concentrations of population, so the estimates should be reasonably accurate as well as conservative. The table displays the vaccination doses and people vaccinated for each zip code area.



Vaccination numbers for the eligible population

Zip Code Area	Doses administered	People with at least one dose	Vaccination series completed	Fully vaccinated people
97002-Aurora	3,775	2,191	1,754	1,658
97020-Donald	747	454	336	304
97026-Gervais	2,444	1,496	1,093	992
97032-Hubbard	2,924	1,734	1,316	1,199
97071-Woodburn	21,318	12,554	9,781	8,996
97137-St Paul	1,219	730	604	580
97301-Central Salem	39,294	23,109	17,718	16,477
97302-South Salem	39,552	22,034	18,376	17,616
97303-Keizer	33,306	18,878	15,398	14,606
97305-NE Salem	29,840	17,586	13,532	12,626
97306-S Salem, Sunnyside	30,220	16,920	13,991	13,392
97310-Oregon State Pen.	174	98	78	78
97317 SE Salem	17,731	10,215	8,148	7,685
97325-Aumsville	4,556	2,665	2,055	1,948
97342-Detroit	103	61	45	42
97346-Gates	267	159	114	109
97352-Jefferson	3,722	2,182	1,747	1,627
97358-Lyons	238	136	109	106
97362-Mt Angel	3,264	1,885	1,483	1,412
97375-Scotts Mills	693	398	319	302
97381-Silverton	13,145	7,409	6,116	5,825
97383-Stayton	6,261	3,600	2,813	2,677
97385-Sublimity	3,302	1,830	1,531	1,471
97392-Turner	4,586	2,593	2,156	2,069