

Vaccination Status for Marion County

Data from the ALERT IIS as of August 8, 2021

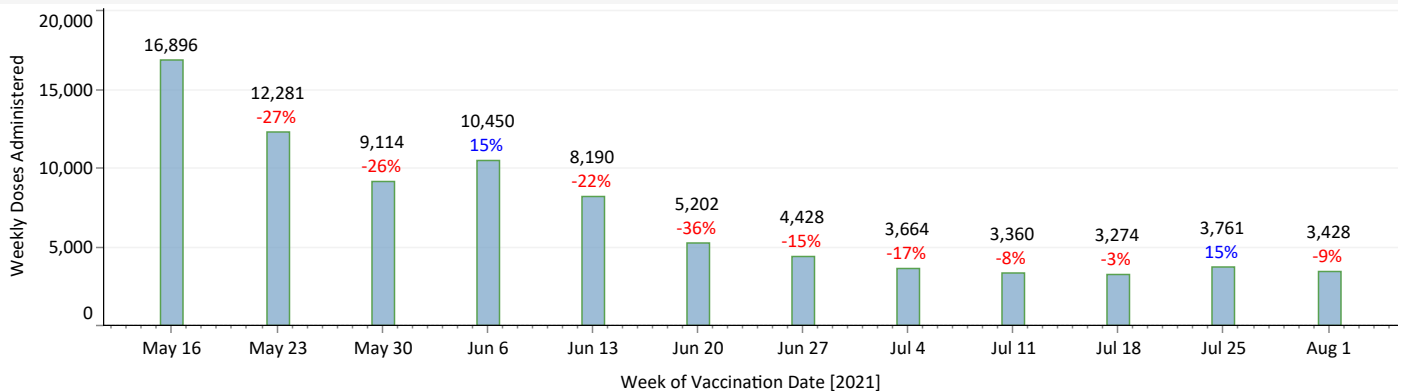
The data in this report comes from the ALERT Immunization Information System (ALERT IIS), which is the immunization registry for the State of Oregon. The data includes *only* those people who are residents of Marion County, and not all vaccinations that take place within the county.

The table below displays the current and monthly level of dose administration to all eligible people. The following chart display the percent change in weekly vaccine uptake for the past 12 weeks. The graph displays the County's progress towards its vaccination goal of a minimum of 65% of the population 16 and older having received at least one dose of a vaccine. This intermediate goal has now been met, however, note that this week vaccination uptake is again declining.

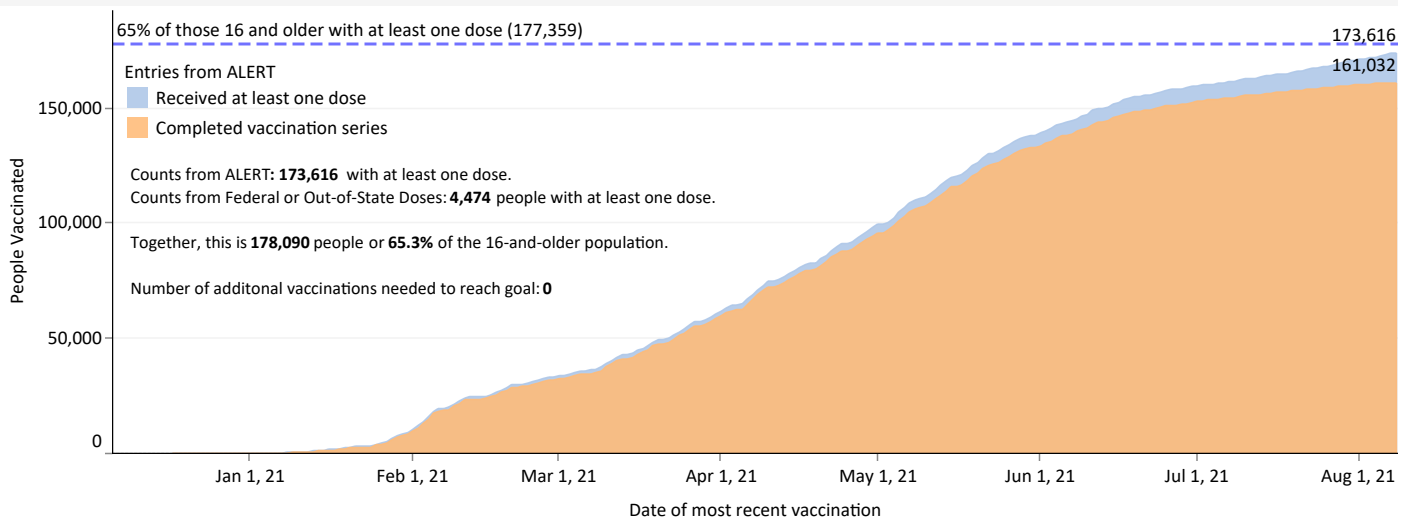
Vaccination Status (all eligible people)

		Doses administered	People with at least one dose	% People with at least one dose	Vaccination series is incomplete	% Vaccination series incomplete	Vaccination series is complete	% Completed vaccination series	People fully vaccinated	% Fully vaccinated
2020	Dec	4,340	4,340	1.2%	4,332	1.2%	8	0.0%	8	0.0%
	Jan	36,499	32,496	9.3%	24,284	7.0%	8,212	2.4%	8,212	2.4%
2021	Feb	43,098	42,257	12.1%	18,376	5.3%	23,881	6.8%	23,881	6.8%
	Mar	58,576	52,341	15.0%	25,790	7.4%	26,551	7.6%	26,551	7.6%
	Apr	74,743	67,730	19.4%	31,863	9.1%	35,867	10.3%	35,867	10.3%
	May	65,216	60,177	17.2%	22,127	6.3%	38,050	10.9%	38,050	10.9%
	Jun	35,070	32,443	9.3%	8,167	2.3%	24,276	7.0%	24,276	7.0%
	Jul	16,007	14,577	4.2%	5,731	1.6%	8,846	2.5%	7,754	2.2%
	Aug	3,479	3,479	1.0%	2,122	0.6%	1,357	0.4%	0	0.0%
	Total for Report Date		337,028	181,053	51.9%	14,005	4.0%	167,048	47.8%	164,599

Weekly doses and percent change in vaccines administered from previous week (last 12 weeks)



Progress Towards 65% Vaccination Goal (for population 16 and older) [Goal Met]



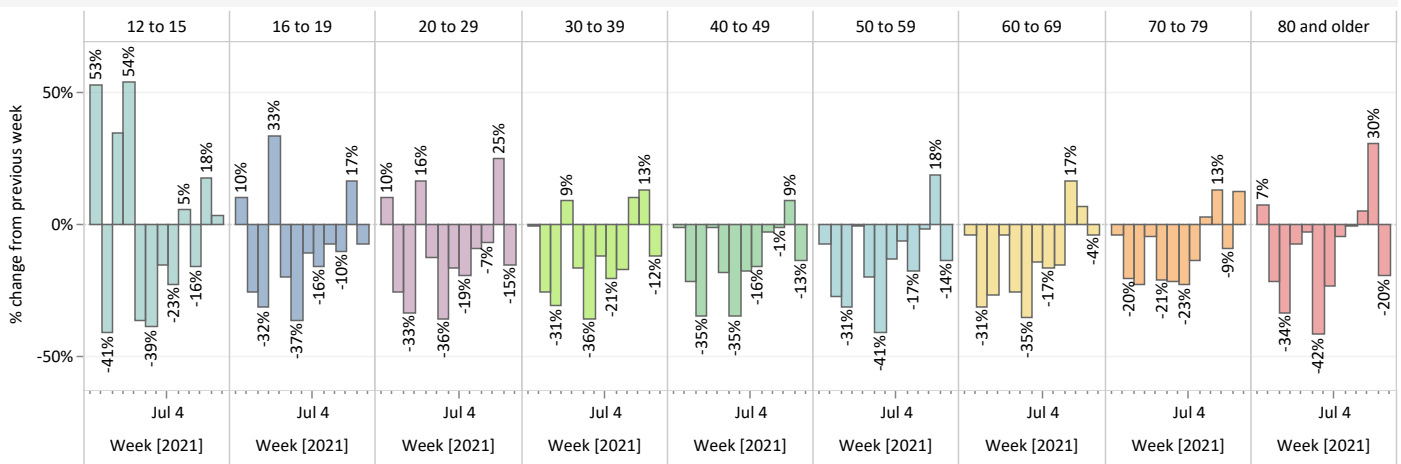
Vaccination Levels by Age Group

The first chart below shows the percent change relative to the previous week for each age group. After last week's positive uptick, only the 12-15 and 70-79 year old groups increased their number of vaccine doses administered.

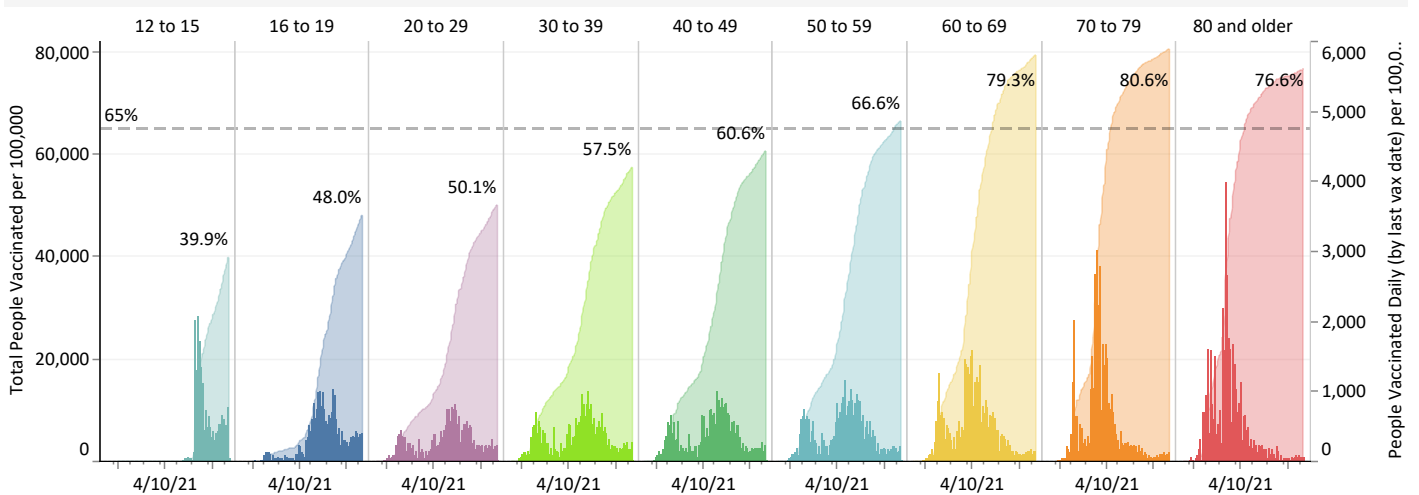
The second chart below uses rate calculations to compare the cumulative number people vaccinated and daily vaccinations among age groups. Counts are plotted based on the date of the person's last vaccination. Similar to last week, those 50 and older have exceeded the 65%-vaccinated threshold, with those 70 to 79 remaining as the only group to have exceeded the 80% threshold.

The table at the bottom of the page shows cumulative counts for doses administered, and the number of partial, complete and fully vaccinated people by age groups for Marion County, along with the number of people who must still be vaccinated for the age group to reach the 65% at-least-one-dose threshold, for comparison.

Percent change in vaccines administered from previous week (last 12 weeks)



Cumulative and Daily Distribution of Vaccinations (last vax date)



Vaccination Status by Age Group

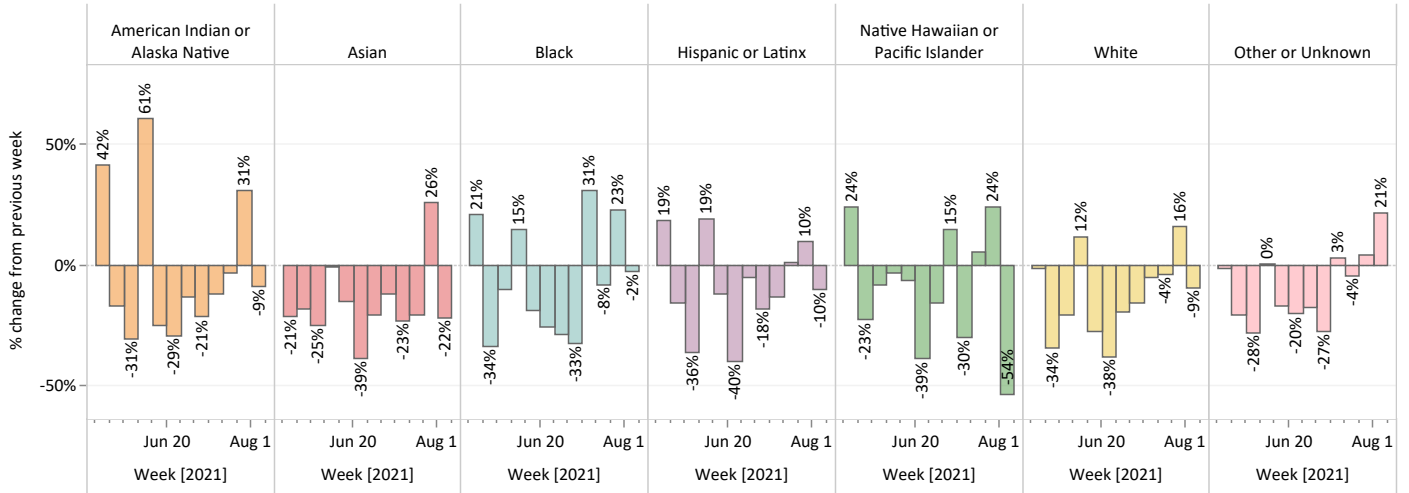
Age Group	Doses administered	People with at least one dose	People with completed vaccinations	Fully vaccinated people	People needed to meet target
12 to 15	13,550	7,558	6,016	5,627	4,544
16 to 19	17,067	9,397	8,089	7,783	3,145
20 to 29	42,656	23,513	20,706	20,273	6,822
30 to 39	47,670	26,047	23,553	23,178	3,218
40 to 49	48,308	26,357	24,191	23,871	1,705
50 to 59	50,682	27,427	25,541	25,248	0
60 to 69	56,039	29,855	28,337	28,130	0
70 to 79	40,487	21,242	20,346	20,249	0
80 and older	20,565	10,782	10,268	10,239	0

Vaccination Levels by Race/Ethnicity

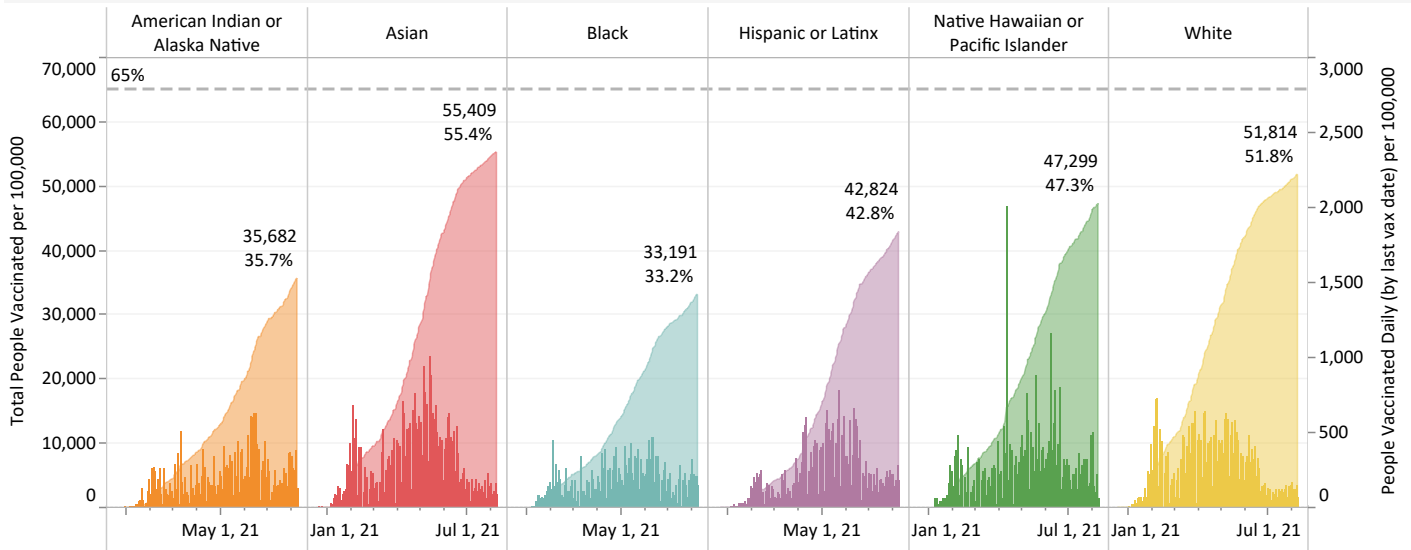
These charts and table show how vaccine uptake has progressed since mid-December, 2020. The top chart shows the percent change from the previous week's dose totals for the past 12 weeks. Following an encouraging week last week, this week saw declines in uptake except for the "other or unknown race" group.

The remaining chart and table below detail the cumulative and daily (last vax date) rates of vaccination by race category, and the number of people needed to reach the 65% threshold. These values are for all people in the population, as estimates of age by race are error-prone.

Percent change in vaccines administered from previous week (last 12 weeks)



Cumulative and Daily Distribution of Vaccinations (last vax date)



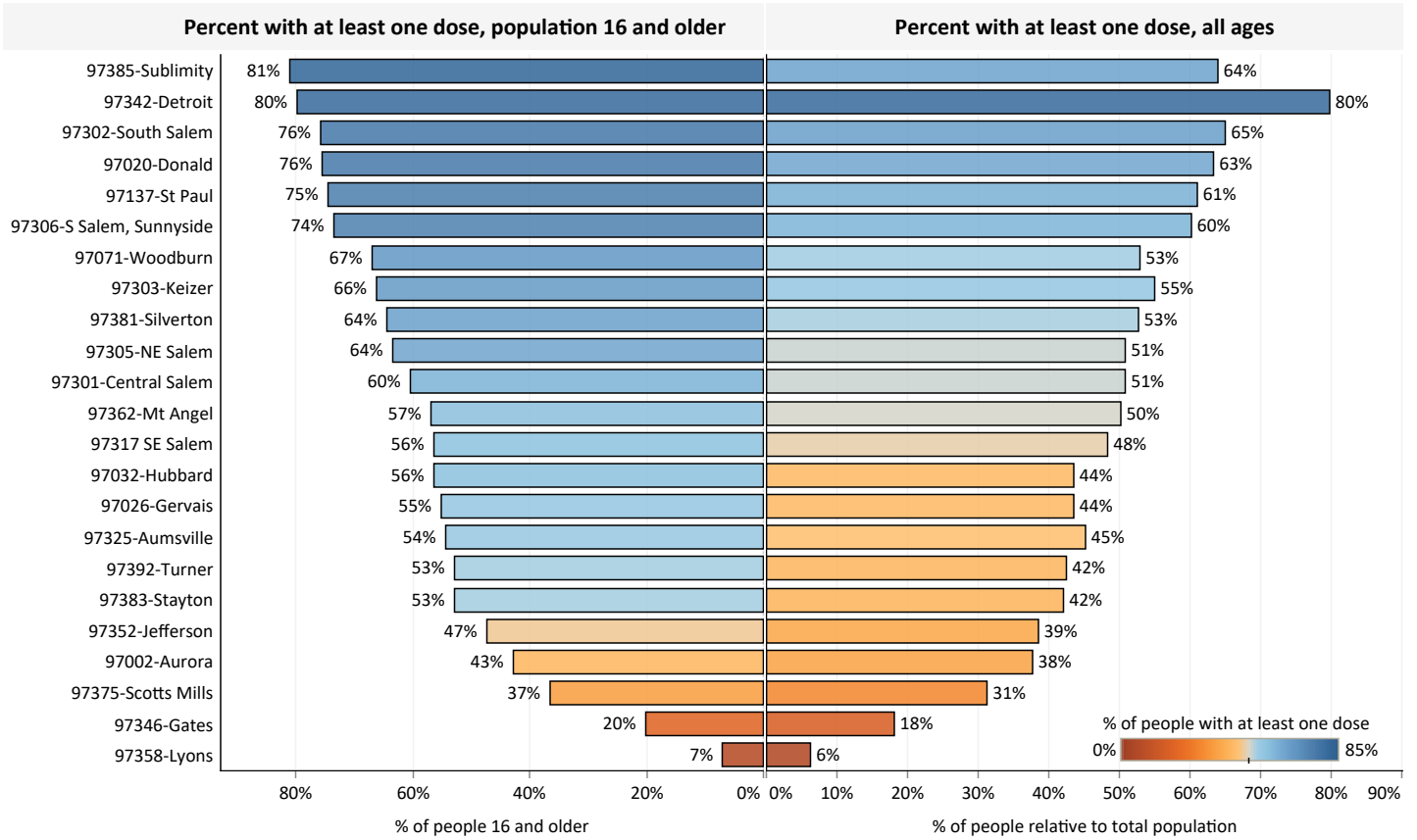
Note: There are 11,644 people who did not specify a race or ethnicity or selected 'Other'. This is 3.3% of the County's population.

Vaccination Status by Race/Ethnicity

Race/Ethnicity	Doses administered	People with at least one dose	People with completed vaccinations	People Fully Vaccinated	People needed to meet 65% threshold in each race category
American Indian or Alaska Native	11,315	6,147	5,444	5,234	5,045
Asian	10,319	5,420	5,113	5,051	931
Black	4,375	2,412	2,123	2,066	2,312
Hispanic or Latinx	63,248	34,974	31,096	30,386	18,022
Native Hawaiian or Pacific Islander	4,319	2,355	2,117	2,051	881
White	222,768	118,323	110,917	109,736	30,050
Other or Unknown	20,684	11,644	10,238	10,075	0

Zip Code Area

The chart below compares two estimates of vaccination status by zip code area: to the left are the results for the 16 and older population and to the right that for the entire population. Zip codes that tend towards high case counts: 97317, 97302, 97303 now have over 65% of those 16 and older with at least one dose. South Salem (97302) has surpassed 65% for all eligible people. The table below displays the vaccination doses and people vaccinated for each zip code area.



Vaccination numbers for the eligible population

Zip Code Area	Doses administered	People with at least one dose	Vaccination series completed	Fully vaccinated people
97002-Aurora	4,650	2,512	2,355	2,333
97020-Donald	1,063	582	541	523
97026-Gervais	3,495	1,944	1,730	1,687
97032-Hubbard	4,047	2,202	2,008	1,982
97071-Woodburn	29,013	15,789	14,456	14,165
97137-St Paul	1,510	845	790	787
97301-Central Salem	52,394	28,573	25,886	25,431
97302-South Salem	47,912	25,200	23,760	23,531
97303-Keizer	42,186	22,649	20,783	20,502
97305-NE Salem	40,913	22,329	20,182	19,781
97306-S Salem, Sunnyside	36,953	19,503	18,306	18,114
97310-Oregon State Pen.	180	101	81	80
97317 SE Salem	22,912	12,325	11,354	11,168
97325-Aumsville	5,845	3,157	2,906	2,863
97342-Detroit	126	71	62	61
97346-Gates	330	179	159	156
97352-Jefferson	4,590	2,518	2,320	2,302
97358-Lyons	282	154	141	141
97362-Mt Angel	4,027	2,152	2,017	1,989
97375-Scotts Mills	851	462	431	425
97381-Silverton	16,064	8,516	8,018	7,925
97383-Stayton	7,889	4,219	3,885	3,817
97385-Sublimity	3,848	2,017	1,911	1,899
97392-Turner	5,577	2,977	2,786	2,760