



Vaccination Status for Marion County

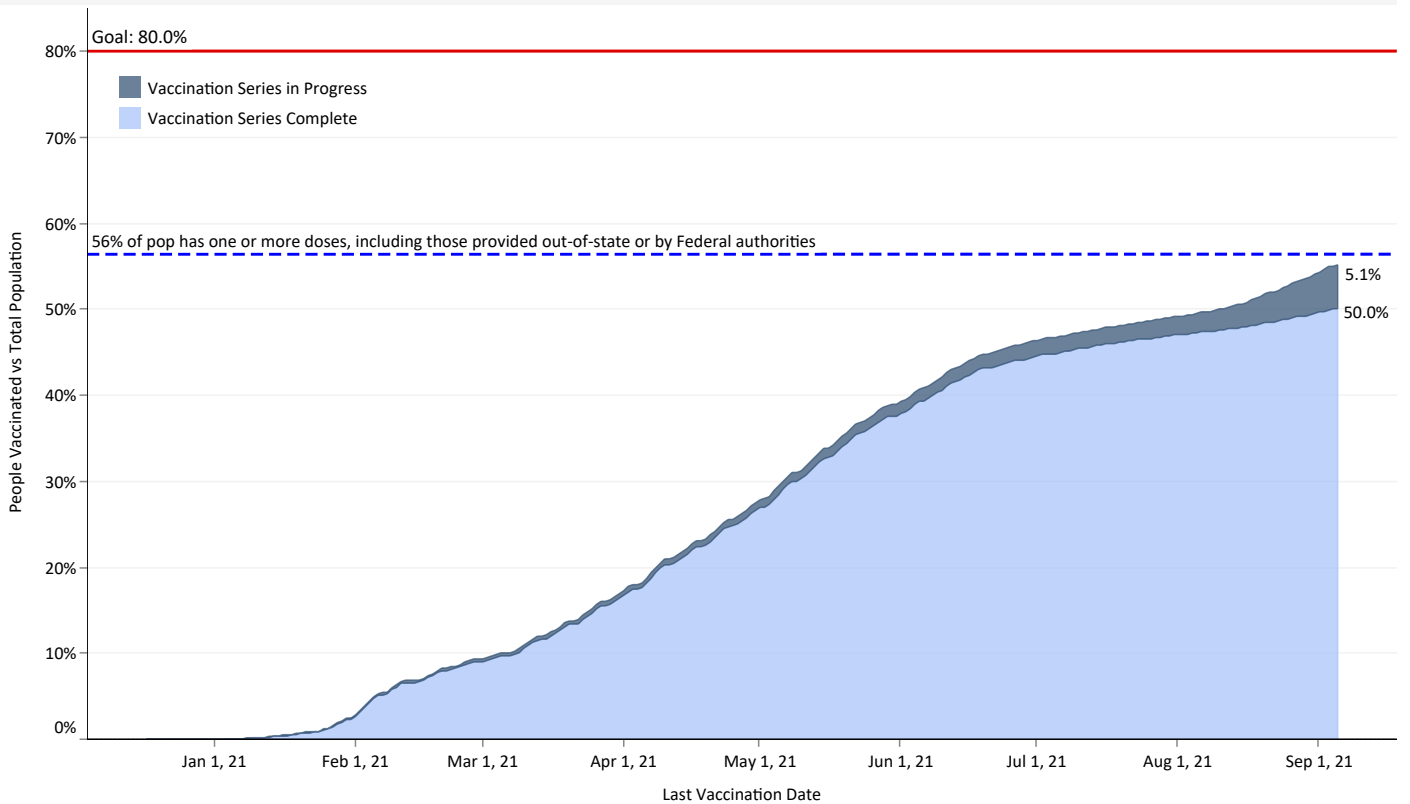
Data from the ALERT IIS as of September 5, 2021

The data in this report comes from the ALERT Immunization Information System (ALERT IIS), which is the immunization registry for the State of Oregon. The data includes *only* those people who are residents of Marion County, and not all vaccinations that take place within the county. Only data from the ALERT IIS contains information on the status of an individual (in progress or complete) and their demographic and location information.

The table below shows the number of completed vaccinations and in-progress vaccinations per month and the percentage coverage in the total population (est. 349,120). The chart below displays the cumulative status of vaccinations. The cumulative graph displays the percent vaccinated whose data is in the ALERT system. The reference line includes this total and vaccination counts provide by OHA for people vaccinated by Federal sources and of residents who were vaccinated while out of state.

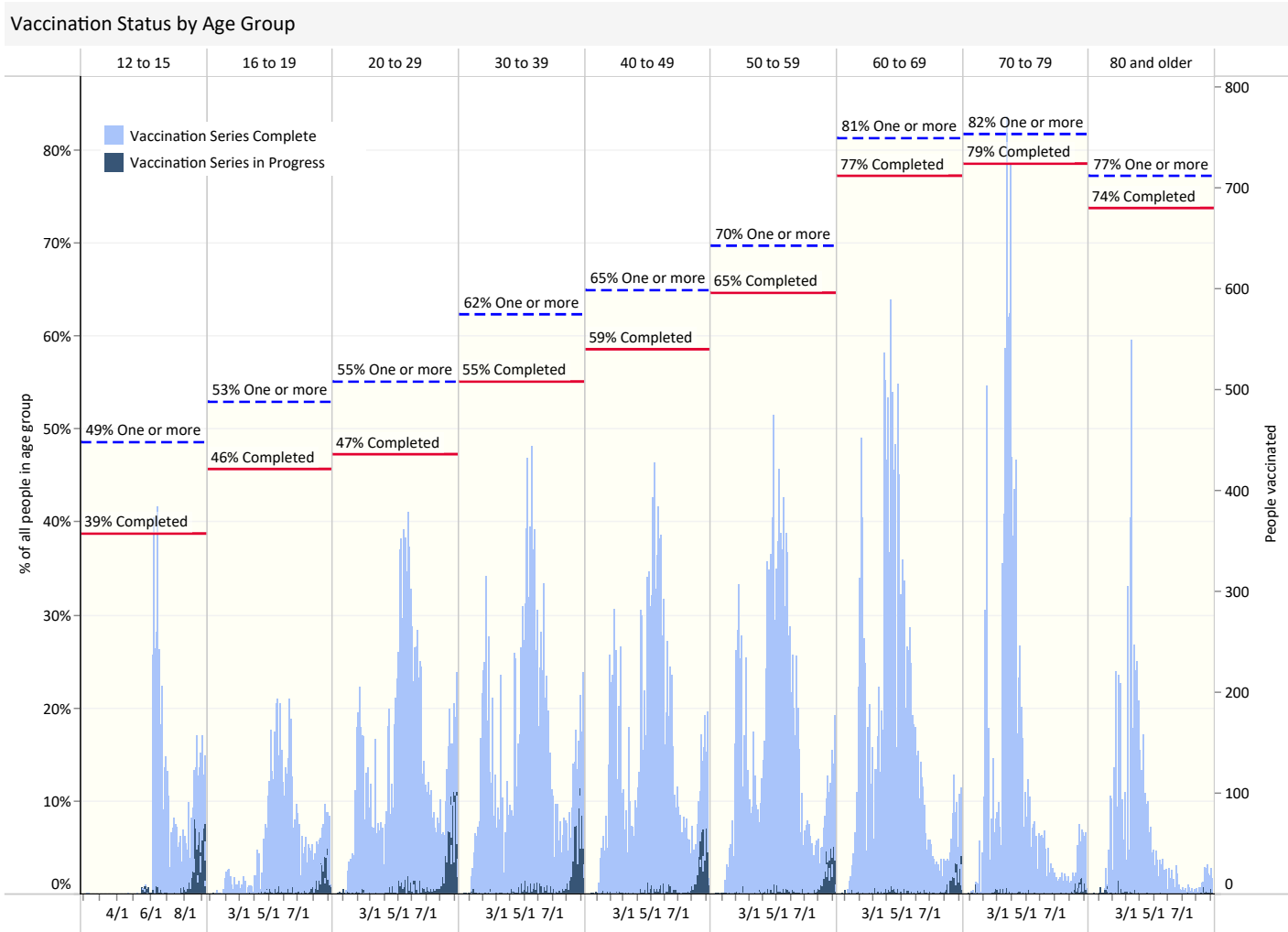
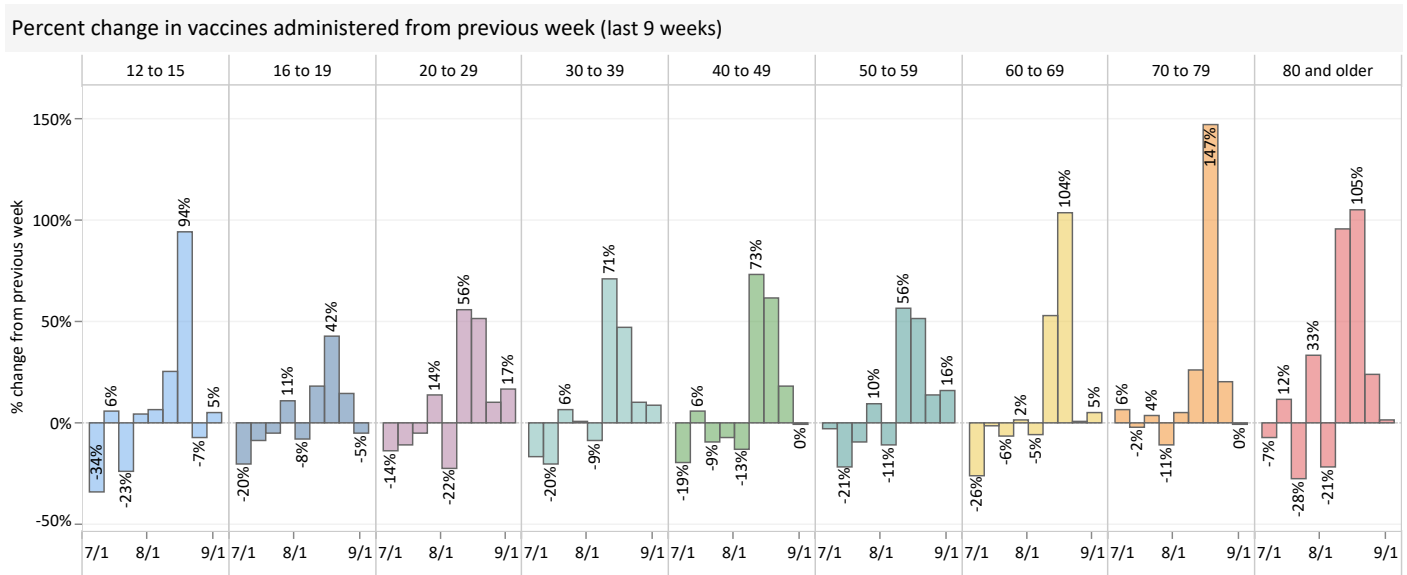
Month	Vaccinations completed	Vaccinations in-progress	People vaccinated	% People with at least one dose	Third doses administered
December	0	43	43	0%	0
January	8,006	598	8,604	2%	0
February	23,324	553	23,877	7%	0
March	26,147	704	26,851	8%	1
April	35,564	1,313	36,877	11%	0
May	37,984	1,657	39,641	11%	1
June	24,269	1,506	25,775	7%	0
July	8,889	1,149	10,038	3%	0
August	8,773	8,351	17,124	5%	951
September	1,728	1,872	3,600	1%	274
Grand Total	174,684	17,746	192,430	55%	1,227

Cumulative Vaccine Administration (percent of total population)



Vaccination Levels by Age Group

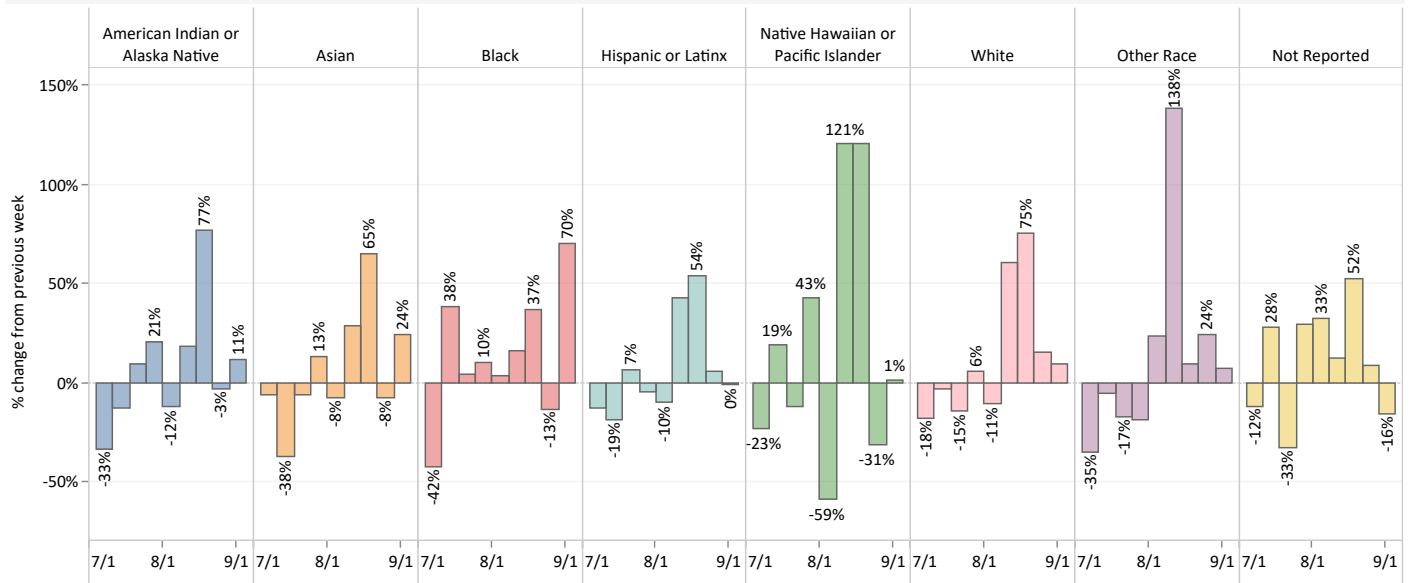
The first chart shows the weekly percent change vaccine uptake by age group, while the second chart displays the daily vaccination counts divided into complete and incomplete vaccinations and the cumulative percentage of the vaccination status for each age group. For all charts, the date is the date of the most recent vaccination.



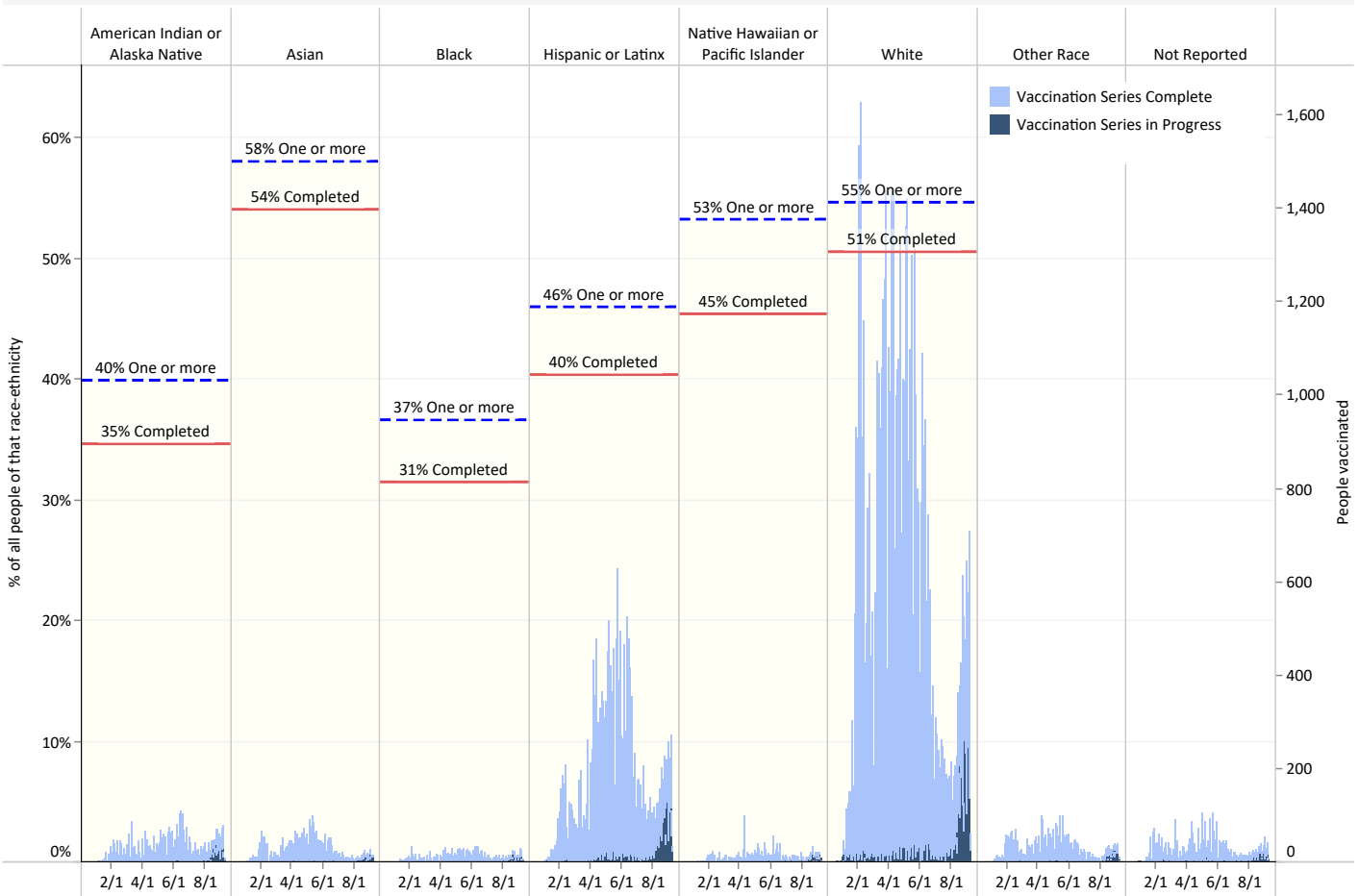
Vaccination Levels by Race-Ethnicity

The first chart shows the weekly percent change vaccine uptake by race-ethnicity category, while the second chart displays the daily vaccination counts divided into complete and incomplete vaccinations and the cumulative percentage of the vaccination status for each category. For all charts, the date is the date of the most recent vaccination.

Percent change in vaccines administered from previous week (last 9 weeks)



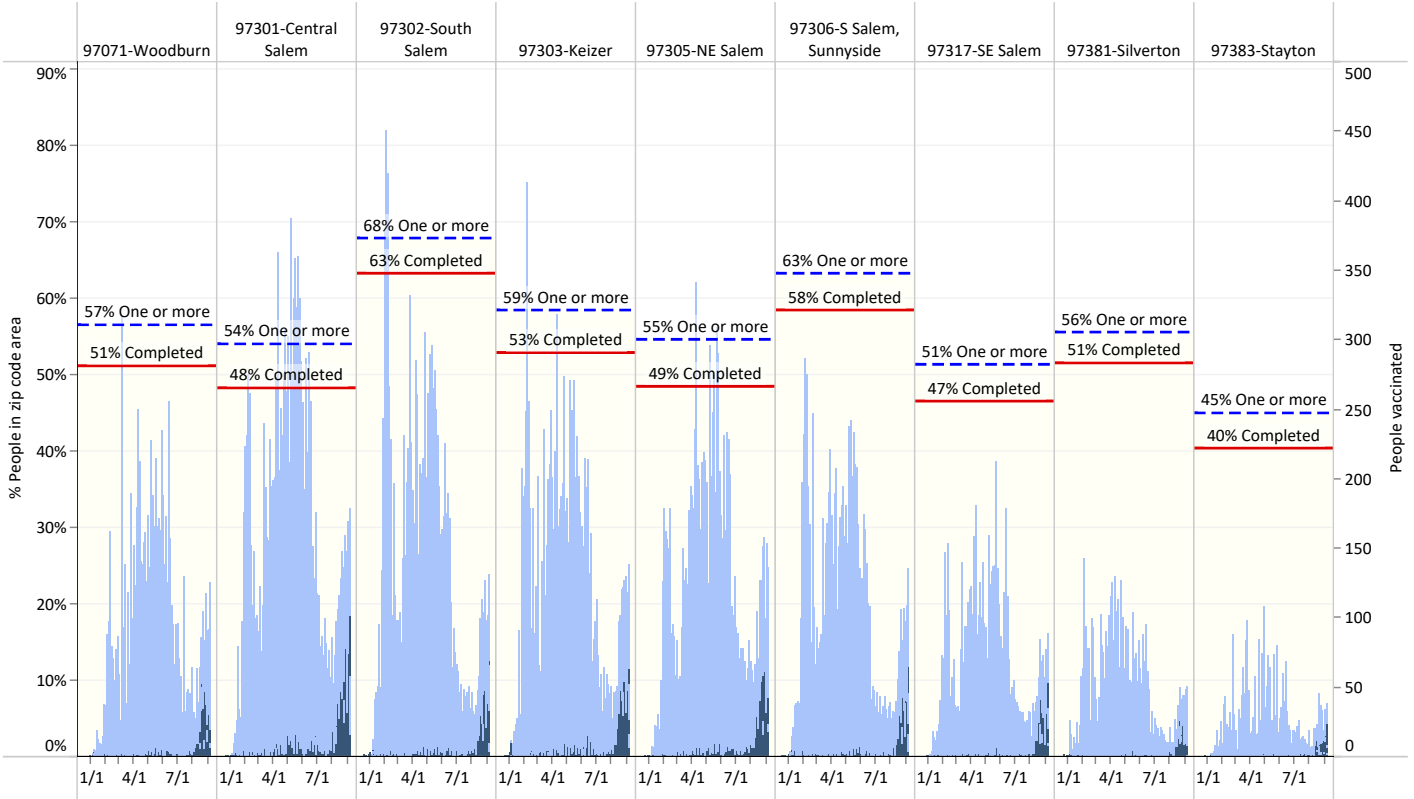
Vaccination Status by Race-Ethnicity Category



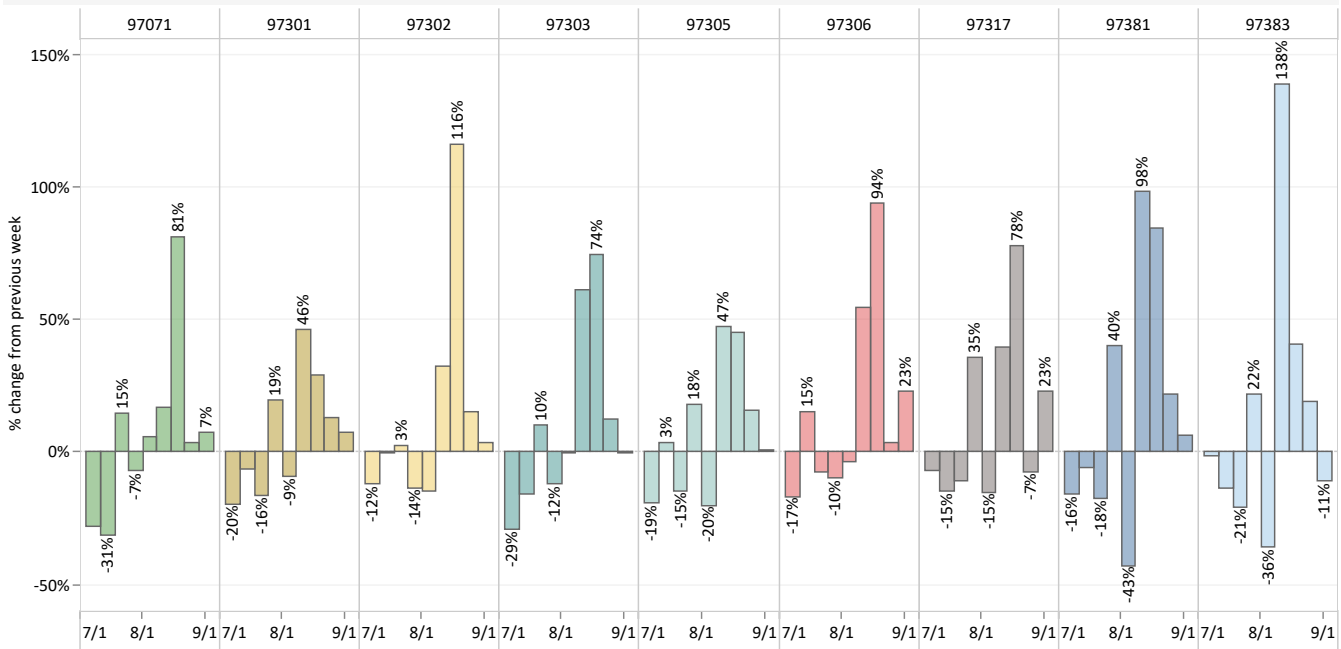
Zip Code Area

The charts on this and the next page present the vaccination status for zip code tabulation areas. Charts have been divided into those areas with a population greater than and less than 10,000 people. The upper chart shows the percentage of people with at least one dose and those that have completed their vaccination series. The blue bar charts are daily number of people vaccinated. The darker bars are those in-process. It is likely that many of those obtained recently will go on to complete their vaccination series. The second chart shows the weekly percent change in vaccination uptake by zip code. In all cases, the date is the date of the latest vaccination.

Vaccine Administered by Zip Code (over 10,000 pop.)



Percent change in vaccines administered from previous week (last 9 weeks)



Vaccination Status by Zip Code Area

