



O R E G O N

2020 Marion County COVID-19 Response

Farm Worksite & Housing Health & Safety Guidelines

Updated: 7/21/2020

Introduction:

The COVID-19 Pandemic is an unprecedented illness that has affected communities throughout the globe. In response to the pandemic, the Oregon Health Authority is overseeing the state response, and the Marion County Incident Command System oversees the local response. The Marion County COVID-19 response looks to protect the health of everyone, but especially vulnerable populations. Outbreaks in agricultural settings can threaten the health of workers, their families, and their communities, as well as the food supply and economic recovery for Marion County and beyond. In addition, Marion County wants to help farmers and farm worker housing with needs that arise due to COVID-19 difficulties.

The following document was created as a roadmap to help farm worksite and/or farmworker housing navigate new OR-OSHA guidelines and keep seasonal farm workers and their families safe and healthy during this pandemic. It follows the Strategic Prevention Framework (see to the right).

Additional resources and documents to review:

1. OHA Agriculture Employers: <https://sharedsystems.dhsoha.state.or.us/DHSForms/Served/le2350.pdf>
2. Oregon Department of Agriculture: www.oregon.gov/oda/agriculture/pages/covid-19.aspx
3. CDC Farm Worksites: www.cdc.gov/coronavirus/2019-ncov/community/guidance-agricultural-workers.html
4. CDC Farmworker Housing: www.cdc.gov/coronavirus/2019-ncov/community/shared-congregate-house/guidance-shared-congregate-housing.html

Table of Contents:

PREPARE

- | | |
|---|-----|
| 1. Know OR-OSHA Rules | p.3 |
| 2. Assess Your Needs Checklist | p.3 |
| 3. Plan: Prevention, Education, Testing | p.5 |

EDUCATE

- | | |
|--------------------------|-----|
| 1. Worker Education | p.6 |
| 2. Resources for Workers | p.6 |

IMPLEMENT

- | | |
|-----------------------------------|-----|
| 1. Workday Workflow | p.7 |
| 2. If a Worker Tests Positive | p.8 |
| 3. Support & Financial Assistance | p.9 |

APPENDIX

- | | |
|---|------|
| A. OR-OSHA Summary of Rules | p.10 |
| B - E. Education Posters in English & Spanish | p.11 |
| F. Definitions & Federally Qualified Health Clinics | p.15 |

PREPARE




Know OR-OSHA COVID-19 Requirements:

To protect the health and safety of farmworkers, employers, and their families, OR-OSHA has created temporary rules to address the COVID-19 emergency. See Appendix A for the temporary OR-OSHA rules that take affect June 1, 2020.

Please note OR-OSHA enforces these rules. Contact them at 503-378-3272 or [osha.oregon.gov/pages/contactus.aspx](https://www.osha-oregon.gov/pages/contactus.aspx).

Assess Your Needs Checklist:

See Appendix A for more information. This list is a preventative tool and is not exhaustive.

| | |
|---|---|
|  | WORKSITE & HOUSING: |
| | Have a social (physical) distancing officer onsite during work hours. |
| | Have 1 toilet for every 10 workers – if unmet, you must demonstrate you contacted 3-4 different local companies regularly (or put on waiting lists) until ratio is met. |
| | Work with transportation agency providing farm worker transportation to ensure: <ol style="list-style-type: none"> 1. At least 3ft distance between workers (6ft distance is recommended if possible) 2. Face coverings worn by passengers and driver in vehicle. 3. High contact areas sanitized before each trip or at least 2 times daily if in continuous use. 4. They have the symptoms poster (Appendix D & E) information available for workers. |
|  | WORKSITE ONLY: |
| | Have 1 hand washing station for every 10 workers– if unmet, you must demonstrate you contacted 3-4 different local companies regularly (or put on waiting lists) until ratio is met. |
| | Toilet & hand washing facilities within 5 minute walk or ¼ mile of workers and toilets at the entrance or exit to a field or completely harvested area. |
| | Toilets & handwashing facilities can be sanitized at least 3 times daily. |
| | A face mask/cloth covering is available for everyone on the worksite every day. |
| | Hand sanitizer is readily available for all workers throughout workday. |
| | COVID-19 Prevention included in training of employees. |
|  | HOUSING ONLY: |
| | All beds are separated by at least 6ft or an impermeable barrier. |
| | Bunk beds are only shared by members of the same household. |
| | Toilets, handwashing facilities, & high contact common use items sanitized at least 2 times daily. |
| | Provide residents with cleaning supplies to keep private living areas sanitary. |
| | An isolation area is available for COVID-19 confirmed positive or suspected cases (Additional isolation areas may be met by Marion County in the event of a confirmed positive test). |

Needs to Address OR-OSHA Requirements:

Do you have unmet needs from the checklist? Marion County is here to assist farm worksites and farmworker housing with supplies they are unable to find themselves due to new OR-OSHA requirements as well as additional resources to keep farmworkers and their families safe and healthy. See below for a list of resources we may be able to assist with:

1. To request materials, such as face masks or coverings, hand sanitizer, gloves, cleaning supplies, face shields, or for help acquiring additional portable toilets, hand washing stations, or other materials you are unable to find yourself, fill out this short survey: www.surveymonkey.com/r/8P6KTJJ.
 - a. Marion County's Health Liaison Team will connect with you after completing survey to help fill in gaps you have due to COVID-19.
 - b. Please note, anyone who has difficulty breathing using the KN95 masks should use a cloth face covering or face shield instead. Please fill out our survey to request how many cloth face coverings or face shields you will need instead.
2. Do you have additional needs and need to connect with Marion County? Contact us at health_liaison@co.marion.or.us. You can also reach us at 503-991-3595.

Cleaning supplies:

Are you curious what cleaning supplies have been approved to disinfect surfaces against COVID-19? Go to the Environmental Protection Agency for a list of disinfecting cleaners: www.epa.gov/pesticide-registration/list-n-disinfectants-use-against-sars-cov-2.

Unable to find any of the products listed on the EPA site? Here is a suggestion from the CDC: www.cdc.gov/coronavirus/2019-ncov/community/disinfecting-building-facility.html

1. **Diluted household unscented bleach solutions may also be used** if appropriate for the surface.
 - a. Check the label to see if your unscented bleach is intended for disinfection and has a sodium hypochlorite concentration of 5%–6%. Ensure the product is not past its expiration date. Some bleaches, such as those designed for safe use on colored clothing or for whitening may not be suitable for disinfection.
 - b. Unexpired household bleach will be effective against coronaviruses when properly diluted. **Follow manufacturer's instructions** for application and proper ventilation. Never mix household bleach with ammonia or any other cleanser. **Leave solution** on the surface for **at least 1 minute**.
2. **To make a bleach solution**, mix:
 - a. 5 tablespoons (1/3rd cup) unscented bleach per gallon of room temperature water OR
 - b. 4 teaspoons unscented bleach per quart of room temperature water
3. Bleach solutions will be effective for disinfection up to 24 hours.
4. **Alcohol solutions with at least 70% alcohol may also be used.**

Still need cleaning supplies? Marion County may be able to help. Please complete our short survey to request: WWW.SURVEYMONKEY.COM/R/8P6KTJJ

Plan: Prevention

1. Provide education to workers about COVID-19 symptoms and COVID-19 prevention methods (see Farmworker Education below and on page 6).
2. Appoint a 'Social Distancing Officer' to ensure workers keep a 6ft distance throughout the workday.
3. Provide prevention signs in applicable languages at congregate locations (See education materials below). Example locations for posters include equipment sheds, hand washing stations, portable toilets, etc.
4. Have a protective face mask/cloth covering for each worker to wear and hand sanitizer readily available.
5. Sanitize personal work equipment prior to the start of each shift.
6. Before each shift, verbally check-in with workers asking if they are showing any symptoms of COVID-19. Temperature checks can also be done at this time if you have touchless thermometers.

Plan: Education

1. Onsite Education: Would you like a community based organization to come out and do onsite, in-person prevention education? Please contact health_liaison@co.marion.or.us to request.
2. Put up posters in common areas in applicable languages:
 - A. See Appendix B - E for simple language printable signs in English & Spanish.
 - b. For additional materials in various languages, go to www.co.marion.or.us/hlt/covid-19/pages/covid-19-multiple-languages.aspx.
 - C. State of Oregon Materials: For Information, Print Materials, & Educational Videos in various languages, go to govstatus.egov.com/or-oha-covid-19.
3. Would you like Marion County to print and send educational materials to you? Please contact health_liaison@co.marion.or.us to request.

Plan: Testing

Are you interested in having onsite testing? We encourage all worksites with Migrant Seasonal Farm Workers to request onsite testing. We highly encourage worksites with several employees who test positive to schedule onsite testing. Contact us at health_liaison@co.marion.or.us for more information.

1. Testing availability is limited and may be prioritized based on community need. Onsite testing cannot be guaranteed.
2. Requests should be submitted 72hrs in advance and testing onsite should be located in a covered area. Electricity is required.

EDUCATE

Provide all farmworkers with the following COVID-19 information:

1. What is COVID-19:
 - a. A new coronavirus infectious disease that causes upper respiratory illness.
 - b. It can be spread from person-to-person contact.
 - c. It is dangerous for older adults and people with underlying health conditions (such as heart disease, lung disease, or diabetes).
 - d. Someone can carry the COVID-19 virus for 2-14 days before showing symptoms. It is possible for a person to carry the virus without symptoms and infect others.

2. How to Prevent Coronavirus:
 - a. Regularly wash hands throughout the day at home and work for at least 20 seconds each time. Here are pointers on when to wash hands:
 - i. Before and after work.
 - ii. Before and after eating or using the toilet.
 - iii. After close interaction with another person.
 - iv. After contacting shared surfaces or tools.
 - v. Before and after wearing a mask or gloves.
 - vi. After blowing nose, coughing or sneezing.
 - b. Sanitize hands at a hand sanitizing station each time you are unable to wash your hands.
 - c. Avoid touching eyes, mouth, and nose with unwashed hands.
 - d. Sneeze or cough into elbow or a disposable tissue and your wash hands afterwards.
 - e. Maintain 6 ft distancing from anyone outside of your household.
 - f. Wear a face mask/covering when it is not possible to maintain 6ft distancing from others.
 - g. In vehicles, maintain 3 ft distance from others and wear a face mask/covering

3. What are the symptoms (CDC):

| | |
|---|--|
| <ol style="list-style-type: none">a. Fever or chillsb. Coughc. Shortness of breath or difficulty breathingd. Fatiguee. Muscle or body aches | <ol style="list-style-type: none">f. Headacheg. New loss of taste or smellh. Sore throati. Congestion or runny nosej. Nausea or vomitingk. Diarrhea |
|---|--|

*Anyone showing symptoms should not work, and should contact a health care provider or ask their employer for assistance.

4. Help is available for farmworkers:
 - a. **Health Insurance:** The Interface Network can help connect you to health insurance or a free health clinic regardless of immigration status. Call Federico Corzo with Interface Network, 503-949-8684.
 - b. **COVID-19 Sick Pay:** If you get sick with COVID-19, you may qualify to be paid sick leave regardless of immigration status. Ask your employer about COVID-19 sick leave or call Federico Corzo with Interface Network, 503-949-8684. You can also visit www.workerrelief.org.
 - c. **Housing:** Contact Oregon Human Development Corp at 1-855-215-6158 for farmworker sheltering.
 - d. **Childcare:** Get a list of childcare providers by calling 2-1-1.
 - e. **More information:** Call Marion County Warmline at 503-576-4602.

IMPLEMENT

Before Beginning Work:

Farmworker Housing:

1. Put up COVID-19 posters (See Appendix B, C, D, & E) throughout facility.
2. Staff interacting with residents should actively encourage physical distancing between living dwellings, and any residents presenting with symptoms should be advised to not attend work and seek assistance.
3. If a resident presents with or self-identifies with 3 or more symptoms (see page 6 for a list of symptoms) or has a temperature of 100.4 degrees or higher, they should:
 - a. Be asked to not rideshare and to not report to work.
 - b. Be asked to notify their supervisor and report the situation.
 - c. Be provided with housing that is physically isolated from others.
 - d. Be notified to contact a personal care provider and seek medical guidance. If resident does not have a personal care provider, see Medical Clinics section in Appendix F.
 - e. End self-isolation once they meet one of the following:
 - i. 10 days have passed since symptoms first appeared, 72 hours since a fever without taking fever reducing medication, and other symptoms are improving.
 - ii. Clearance from a medical provider confirming they do not have COVID-19.
 - iii. They have produced a negative test result for COVID-19.

Farm Worksite:

1. Put up COVID-19 posters (See Appendix B, C, D, & E) throughout common work areas.
2. Appoint a 'Social Distancing Officer' to ensure workers keep a 6ft distance throughout the workday.
3. Work with transportation agency providing farm worker transportation to ensure:
 - a. Passengers maintain 3ft distance between each other (6ft distance is recommended if possible)
 - b. All passengers and driver wear face mask/cloth coverings during transit. Make sure they have extra face masks/cloth coverings for anyone without one.
 - c. They have cleaning supplies to disinfect between rides, or at least 2 daily if continuously driving.
 - d. They have the symptoms poster (Appendix D & E) information available for workers to view.
4. When farm workers arrive, verbally check in with each worker to see if they have any COVID-19 symptoms.
5. If a worker presents with or self-identifies with 3 or more symptoms (see page 6 for a list of symptoms) or has a temperature of 100.4 degrees or higher, they should:
 - a. Be asked to not report to work.
 - b. Be asked to notify their supervisor and report the situation.
 - c. Be notified to contact a personal care provider and seek medical guidance. If worker does not have a personal care provider, see Medical Clinics section in Appendix F.
 - d. Not return to work until they meet one of the following:
 - i. 10 days have passed since symptoms first appeared, 72 hours since a fever without taking fever reducing medication, and other symptoms are improving.
 - ii. Clearance from a medical provider confirming they do not have COVID-19.
 - iii. They have produced a negative test result for COVID-19.

Throughout the Day:

1. All common areas, tools, and frequently touched objects should be disinfected frequently (see Appendix A for specifics).
2. Consider placing workers in Cohorts:
 - a. Consider grouping healthy workers together into cohorts that include the same workers each day. Effectiveness is optimized if it is aligned with shared living quarters and shared transportation. Grouping workers into cohorts may reduce the spread of COVID-19 transmission in the workplace by minimizing the number of different individuals who come into close contact with each other over the course of a week, and may also reduce the number of workers quarantined because of exposure to the virus.
 - b. Grouped workers, as described above, are considered a single household or family. Farmworkers that are in the same shared housing unit should follow the www.cdc.gov/coronavirus/2019-ncov/daily-life-coping/living-in-close-quarters.html. Owners/operators should maximize opportunities to place farmworkers residing together in the same vehicles for transportation and in the same groups to limit exposure.
3. If a worker becomes sick with multiple symptoms of COVID-19 (see page 6 for a list of symptoms) during the work day, they should:
 - a. Be physically isolated from others and sent home as soon as possible.
 - b. Be notified to contact a personal care provider and seek medical guidance. If worker does not have a personal care provider, see Medical Clinics section in Appendix F.
 - c. Be notified to inform their housing manager if they live in farm worker housing.
 - d. Not return to work until they meet one of the following:
 - i. 10 days have passed since symptoms first appeared, 72 hours since a fever without taking fever reducing medication, and other symptoms are improving.
 - ii. Clearance from a medical provider confirming they do not have COVID-19.
 - iii. They have produced a negative test result for COVID-19.
4. Employers who sent home a sick worker should also:
 - a. Disinfect surfaces worker was in contact with immediately.
 - b. If applicable, contact their labor contractor, agency providing transportation, and farm worker housing facility that they were sent home from work due to symptoms.
 - c. Monitor other workers for symptoms.
 - d. For more information, go to: www.cdc.gov/coronavirus/2019-ncov/community/critical-workers/implementing-safety-practices.html

Worker Tests Positive for COVID-19:

Have a plan: If five or more workers test positive for COVID-19, the State of Oregon will publically identify your worksite as having an outbreak. Marion County suggests having a plan specific to your worksite if this happens. Use the information below and within this document to help craft your plan.

If a worker tests positive:

1. Worker should not return to work immediately after positive test.
2. Worker's housing should be physically isolated from all other workers until contact is made by a Marion County Health & Human Services (HHS). Workers with positive tests should not access shared common spaces during this time.

3. Report the positive case to Marion County's 24/7 line at 503-588-5621. Trained Marion County HHS staff will contact the worker who tests positive within 24 hours and will determine the next course of action. This may include:
 - a. Moving the worker and possibly family to a separate quarantine location until recovery.
 - b. Connection to a social service network, such as food, medications, etc. needed.
4. Marion County HHS staff will conduct contact tracing of anyone who was in close contact with worker who tests positive.
5. Employer should follow CDC guidance to prevent other workers from getting sick: www.cdc.gov/coronavirus/2019-ncov/community/critical-workers/implementing-safety-practices.html.
6. Farmworker housing should follow OSHA requirements to ensure living area is properly sanitized: osha.oregon.gov/covid19
7. **Return to Work:** A worker should not return to work until 10 days have passed since symptoms first appeared, 72 hours have passed with no fever (without taking fever reducing medication), and other symptoms are improving. Per Oregon Health Authority guidelines, once this has been met, workers are not considered contagious. Employers do not need to require a note from a healthcare provider to allow employees to return to work. www.co.marion.or.us/HLT/COVID-19/Documents/Returning_to_Work.pdf

Support & Financial Assistance for COVID-19:

Food Security & Farmworker Safety: www.oregon.gov/oweb/fsfs/Pages/index.aspx

Eligible for agriculture employers through October 25, 2020. Financial Assistance is available for housing, worksite, and transportation to keep farm workers safe during the COVID-19 Pandemic in 2020.

1. Up to \$20,000 reimbursement for housing and field sanitation; maintain receipts for proof of purchase.
2. Up to \$1,000 in transportation assistance; mileage needs to be logged.

Families First Coronavirus Response Act: www.dol.gov/agencies/whd/pandemic

Eligible for employers. Many private businesses with fewer than 500 employees qualify to receive tax credit for COVID-19 related paid sick leave. Funds are distributed from US Department of Labor.

Oregon Worker Relief Fund: www.workerrelief.org/find-a-navigator

Eligible for undocumented immigrant workers who lost wages and who are experiencing hardship due to the pandemic. English & Spanish language provided.

Quarantine Fund: www.workerrelief.org

Eligible for farmworkers late July - December 2020. Up to \$860 for two weeks of self quarantine provided to farm workers regardless of immigration status who are experiencing COVID-19 hardship due to the pandemic, practicing self-quarantine, and seeking health care assistance. English & Spanish language provided.

Oregon Human Development Corporation Programs: www.ohdc.org

Various programs and resources are available to farmworkers who need assistance due to COVID-19.

1. **Farmworker Rental Relief Program:** www.ohdc.org/covid-19-farmworker-rental-relief-fund
2. **Safe Sheltering of Farmworkers Program:** www.ohdc.org/safe-sheltering-of-farmworker

Other State of Oregon Resources: govstatus.egov.com/or-dhs-covid-19

The State of Oregon has various resources to help workers with legal status.

This list is not exhaustive. Submit additional support and financial aid programs for farm employers and workers to health_liaison@co.marion.or.us

Appendix A:

Temporary Oregon rule addressing the COVID-19 emergency in employer-provided housing and in labor-intensive agricultural operations Summary of Key Provisions

Oregon OSHA, April 28, 2020

The rule takes effect May 11, 2020. It temporarily replaces the current rule addressing Field Sanitation in Agriculture and the rules governing Employer-Provided Housing (in agriculture and in all other industries). It also provides new requirements related to COVID-19 mitigation in employer-provided vehicles.

Field Sanitation

- Requires employers to appoint one or more “social distancing officers” and to plan and implement work practices in order to ensure appropriate social distancing (at least 6’ separation) during work activities, breaks, and meal periods.
- Effective June 1, 2020, increases toilet availability by decreasing the ratio of both toilet and handwashing facilities in the field from the current 1 per 20 workers to 1 per 10 workers. Requires employers who can demonstrate that market availability prevents immediate compliance to provide as many toilet and handwashing facilities as possible until the ratio is achieved.
- In addition to the existing requirement that toilet and handwashing facilities be within ¼ mile of the workers, requires toilets to be located at the entrance or exit to the field or in a completely harvested area, whichever is closer.
- Requires toilets and handwashing facilities to be sanitized at least three times daily.
- Revises the field sanitation notice and training requirements to include prevention of COVID-19.

Labor Housing

- In relation to registered Agricultural Labor Housing operations, provides additional guidance regarding registration of temporary housing and the use of existing hotel or motel facilities.
- Requires employers to appoint one or more “social distancing officers” and to plan and implement housing operations in order to ensure appropriate social distancing (at least 6’ separation) between unrelated individuals.
- Effective June 1, 2020, requires additional toilets by reducing the ratio from 1 toilet for every 15 workers to 1 toilet for every 10 workers. Requires employers who can demonstrate that market availability prevents immediate compliance to provide as many toilet facilities as possible until the ratio is achieved.
- Prohibits use of bunk beds by unrelated individuals.
- Does not change square footage requirements, but requires that beds be separated by at least six feet or by an impermeable barrier.
- Requires common use toilets and handwashing facilities and other high contact common use items to be sanitized at least two times daily, and requires that the employer provide appropriate cleaning materials to enable occupants to keep private living areas clean and sanitary.
- Notes that COVID-19 requires immediate (day or night) reporting under existing OHA rules.
- Includes provisions related to the isolation of COVID-19 confirmed or suspected cases, including the requirement that the employer ensure food and water is provided to those in isolation.

Transportation

- Requires at least 3 feet social distancing be maintained during travel in employer-provided vehicles.
- Requires that facial coverings be worn by passengers and by the driver in employer-provided vehicles.
- Requires high-contact areas in employer-provided vehicles be sanitized before each trip or at least two times daily if in continuous use.
- Requires that the employer provide training to employees about the need to ensure appropriate social distancing when in their personal vehicles.

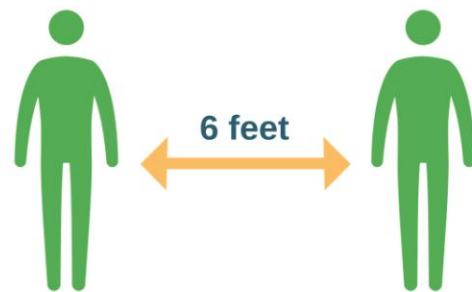
For more information, go to [OSHA.oregon.gov](https://www.osha.oregon.gov) or [osha.oregon.gov/OSHArules/adopted/2020/ao2-2020-text-emergency-rules-ag-covid.pdf](https://www.osha.oregon.gov/OSHArules/adopted/2020/ao2-2020-text-emergency-rules-ag-covid.pdf)



SAFE, STRONG, AND THRIVING

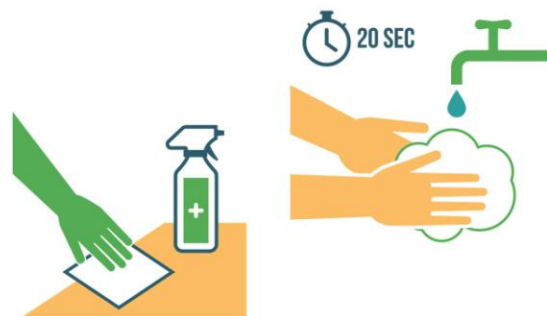
Together, we can keep Marion County open

Physical Distance



Protect Others

Keep Clean

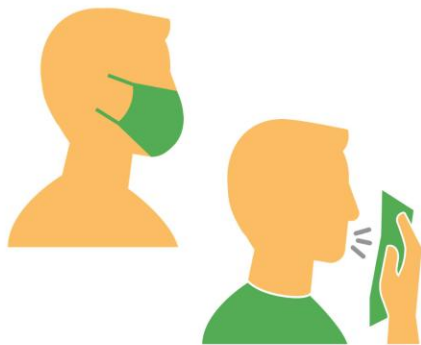




SEGURO, FUERTE, Y PRÓSPERO

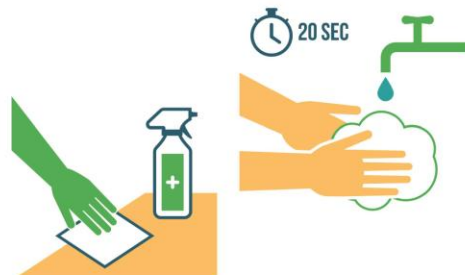
Juntos, podemos mantener el Condado Marion abierto

Distancia Física



Proteger A Otros

Mantenerse Limpio



COVID-19 | SYMPTOMS

If you have 3 or more of these symptoms, call a medical provider and notify your employer that you cannot work today:



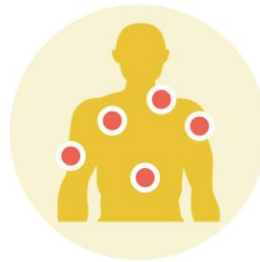
Fever or Chills



Cough



Sore Throat



Muscle Pain



**Upset Stomach/
Diarrhea**



**Recent Loss of
Taste or Smell**



**Shortness of
Breath**



Headache



Farm Workers: Free medical visits and compensation for lost wages if you are sick may be available. Call Federico at 503-949-8684.



COVID-19 | SÍNTOMAS

Si tiene 3 o mas de estos síntomas, llame a su proveedor de atención médica y deje saber a su empleador que no puede trabajar hoy:



Fiebre o escalofríos



Tos



Dolor de garganta



Dolores musculares



Malestar estomacal o diarrea



Pérdida nueva del sentido del gusto o del olfato



Falta de aliento o dificultad para respirar



Dolor de cabeza



Trabajadores Agrícolas: Pueden ver visitas médicas gratuitas y compensación por salarios perdidos si está enfermo. Llamar Federico a 503-949-8584.



Appendix F: Definitions

Close contact: In a COVID-19 outbreak, someone is considered a “close contact” when they have spent 15 minutes or longer within 6 feet of someone confirmed or suspected to have COVID-19.

COVID-19: COVID-19 is a respiratory illness caused by a new virus called SARS-CoV-2. Symptoms can include a fever, cough, and shortness of breath, as well as other symptoms. COVID-19 can range from very mild to severe; even people who do not show any symptoms can spread the virus. Some people become so sick they must be admitted to the hospital, and some people may die from the illness. The virus is thought to spread mainly from person to person:

- Between people who are in close contact with one another (within about six feet or two meters).
- Through droplets produced when an infected person coughs, sneezes, or talks.
- By touching a surface that has the virus on it and then touching their own mouth, nose, or face.

Disinfecting: Disinfecting means using chemicals to kill germs that might be on a surface. The Environmental Protection Agency (EPA) has a list of disinfectants that can be used to kill the virus that causes COVID-19: <https://www.epa.gov/pesticide-registration/list-n-disinfectants-use-against-sars-cov-2>

Housing: Any housing provided to farm workers, such as for guest workers in H2A housing, special precautions should be taken to ensure that the housing unit does not contribute to the spread of COVID-19.

Isolation and quarantine help protect the public by preventing exposure to people who have or may have a contagious disease. **Isolation** separates sick people with a contagious disease from people who are not sick. **Quarantine** separates and restricts the movement of people who were exposed to a contagious disease to see if they become sick.

Medical Clinics who may provide care and testing to those without a provider: (this list is not exhaustive and may be updated)

Northwest Human Services (Salem) – Federally Qualified Health Clinic
Call mainline at (503) 378-7526
www.northwesthumanservices.org

Yakima Valley Farm Workers (Various locations) – Federally Qualified Health Clinic
Salud (Woodburn): (503)982-2000
Lancaster Family Health Center at Beverly (Salem): (503)588-0076
Lancaster Family Health Center at Lancaster (Salem): (503)576-8400
Pacific Pediatrics (Woodburn): (503)982-0626
www.yvfwc.com

Salem Health Urgent Care or Emergency Room:
Call mainline at (503)561-5200
www.salemhealth.org

Personal Protective Equipment (PPE): Personal protective equipment, commonly referred to as "PPE", is equipment worn to minimize exposure to hazards that cause serious workplace injuries and illnesses. PPE may be needed to prevent certain exposures when Engineering and Administrative controls do not ensure that employees will be able to maintain physical distancing at all times. Examples of PPE include: gloves, goggles, face shields, and face masks.

Physical distancing: Also known as “social distancing,” this is the practice of separating people so that they are at least 6 feet, or about 2 meters, apart.

Probable case: A probable case occurs when a person who has had close contact with a confirmed case shows symptoms of COVID-19 infection, defined by current CDC guidelines (<https://www.cdc.gov/coronavirus/2019-ncov/symptoms-testing/symptoms.html>).

Transportation: When employers provide transportation for workers to any location such as the work site, employer-provided housing, or when transporting workers to complete personal errands such as food shopping, care must be taken to limit the spread of COVID-19.

Previous versions released on 6/2/2020 & 6/16/2020