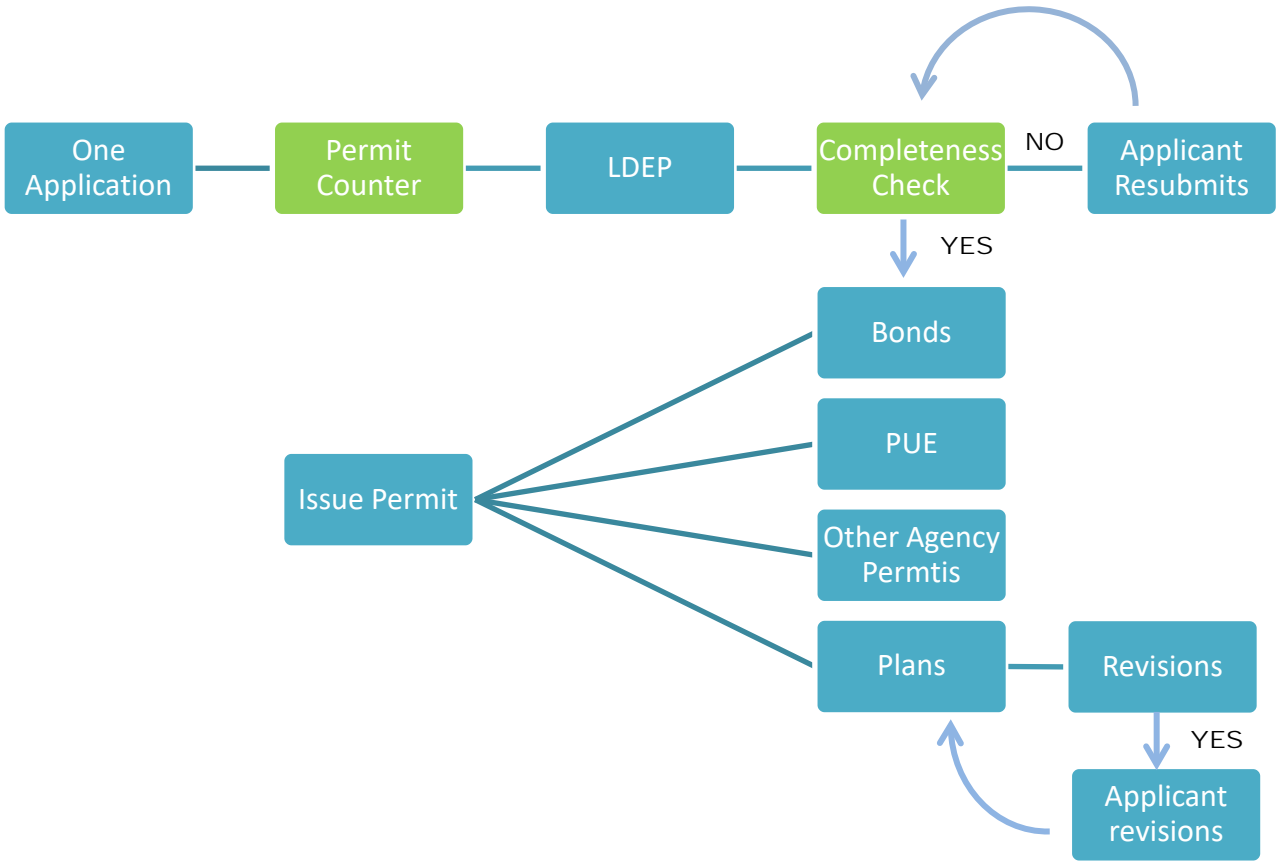


# LAND DEVELOPMENT ENGINEERING AND PERMITS (LDEP)

## 1 TO 3 MONTHS

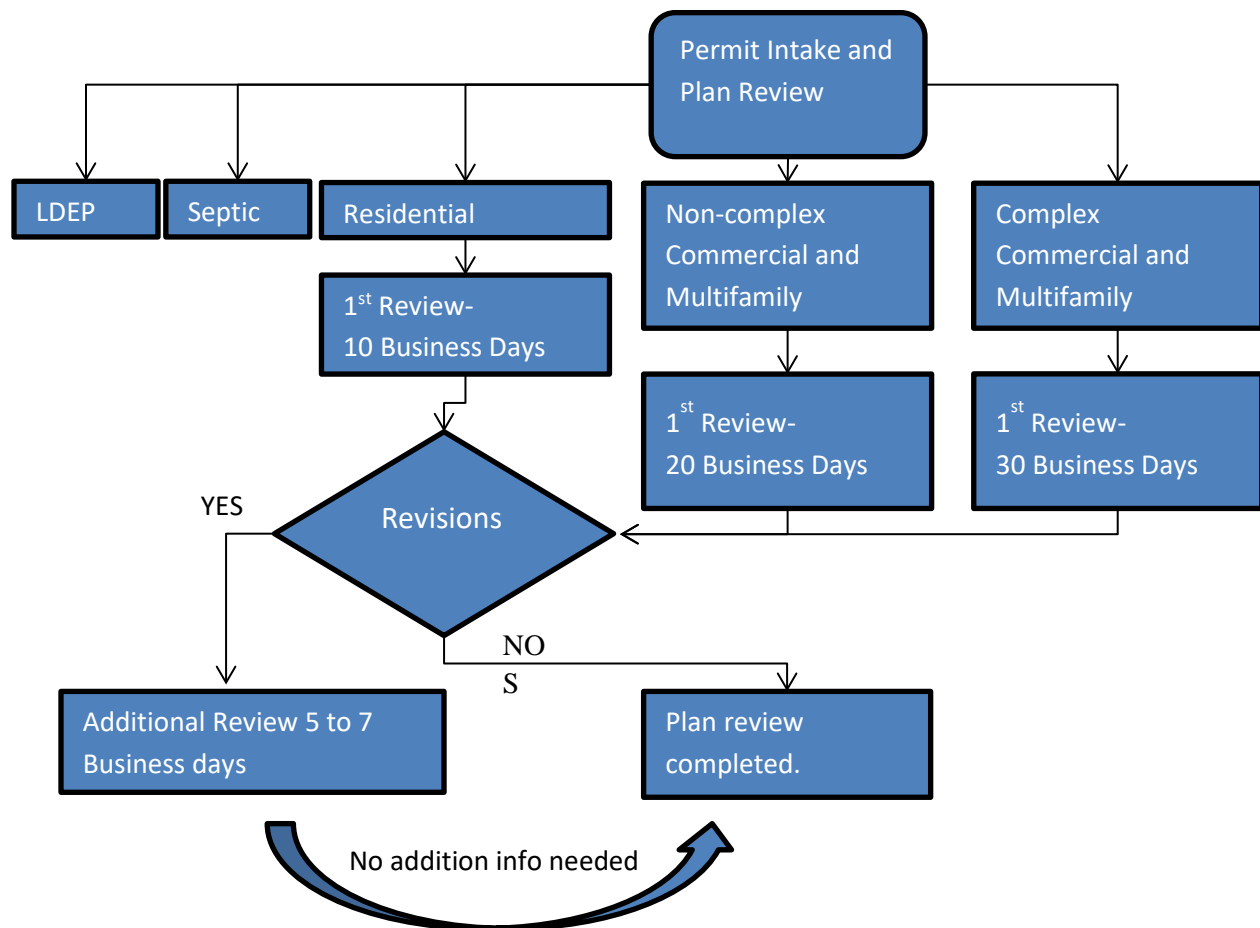
- 1. Implement Accela Public Works Module
  - Combines 7 permits into a single application submitted at permit counter. (Over Dimensional is a specific permit program managed by ODOT)
  - Also allows for online permit status check
- 2. Revisions to Website pages for permits



## 12 to 18 Months

- GIS tags to map permit locations
- Electronic Plans submittal
- LDEP spot at the Building Counter

## BUILDING DIVISION



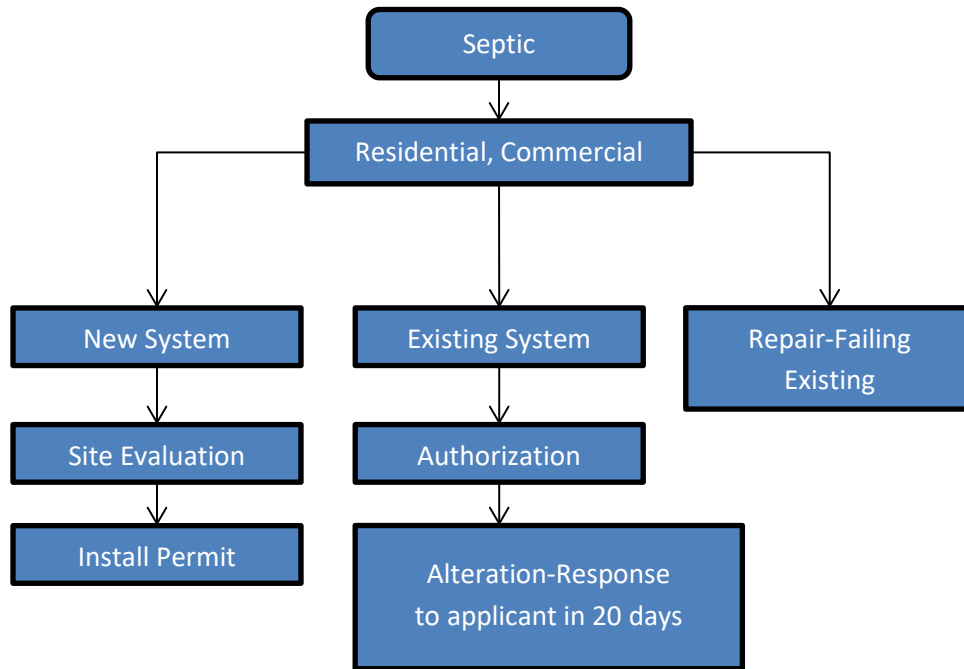
### Current Challenges:

- Incomplete Plan Submittals.
- Resubmittal Times from Applicants.
- Staffing and Internal Procedures/Processes.
- City Applications and Delivery Times.
- Code Requirements.
- Time frame for Issuing Building Permits.  
Plan Reviews, LDEP and Septic.

### Future Improvements:

- Educate Applicants and Improve Customer Service.
- Checkup More Frequently with Applicants.
- Improve Internal Processes and Customer Service.
- Improve Education and Involvement.
- Educate and Improve Customer Service to Help Through the Requirements.
- Improved communication with Septic and LDEP Departments to Improve Permit Issuance.
- Integration of Accela LDEP Public Works module with Building E-permitting.

## BUILDING DIVISION



### Current Challenges:

- Incomplete Applications/Site Plans.
- Internal Processes and Procedures.
- Repair Permits.
- Staffing and work load.
- DEQ Rules and Regulations.

### Future Improvements:

- Working with Customers.
- Improve Internal Procedures.
- Complete time sensitive applications sooner.
- Maintain Full Staff Level and Delegate Specific Tasks to be Completed Quicker.
- Improve Customer Service



# Marion County Public Works

## Engineering, Building Inspection & Planning Org Chart

