



PROMOTER: Willamette Country Music Concerts, LLC

EVENT: Bi Mart Willamette Country Music Festival

DATES OF EVENT: August 15, 16, 17 and 18, 2019

ASSEMBLY PLAN

Bi Mart Willamette Country Music Festival is a 4-day outdoor country music concert event. The event is held on private property owned by Jimmy and Kristine Gross. The location of the property is ¼ mile north of the intersection of Talbot Road S and Jorgenson Road S. The physical address is 13384 Jorgenson Road S, Jefferson, Oregon. The festival site is on approximately 480 acres with access on Talbot Road S, Jorgenson Road S, and Wintel Road S.

ACCESS-CAMPING

NB- Ankeny Hill Exit 243>Ankeny Hill Rd.>Jefferson Hwy99E>Talbot Rd.>Camping Section D (GATE 12). camping in the following sections; **A, B, C, D** to the Festival site entering from North Bound I-5. This entrance/exit is a maintained two lane paved road that allows traffic control team to split traffic in multiple entrances as they enter the property.

NB- Ankeny Hill Exit 243>Ankeny Hill Rd.>Jefferson Hwy99E>Talbot Rd.>Jorgenson Rd.>Wintel Rd. (GATES 4/5). camping in the following sections; **Country Comfort/ADA** to the Festival site entering from North Bound I-5. This entrance/exit is a maintained two lane paved.

SB- Ankeny Hill Exit 243>Ankeny Hill Rd.>Wintel Rd. S>Jorgenson Rd.(GATES 8/10). camping in the following sections; **A, B, C, D** to the Festival site entering from South Bound I-5. This entrance/exit is a maintained two lane paved road that allows traffic control team to split traffic in multiple entrances as they enter the property.

SB- Ankeny Hill Exit 243>Ankeny Hill Rd.>Wintel Rd. S. (GATES 4/5). camping in the following sections; **Country Comfort/ADA** to the Festival site entering from South Bound I-5. This entrance/exit is a maintained two lane paved road.

ACCESS – DAILY PARKING

NB- Ankeny Hill Exit 243>Ankeny Hill Rd.>Jefferson Hwy99E>Talbot Rd.>Jorgenson Rd.> ENTRANCE/EXIT (GATE 11) FOR daily PREMIUM/GA parking for the Festival arriving from I-5 Northbound. 1,400ft of stacking.

NB- Ankeny Hill Exit 243>Ankeny Hill Rd.>Jefferson Hwy99E>Talbot Rd.>Jorgenson Rd.> WINTTEL Rd.>ENTRANCE/EXIT (GATE 5) FOR daily ADA parking for the Festival arriving from I-5 Northbound.

SB- Ankeny Hill Exit 243>Ankeny Hill Rd.>Wintel Rd. S>ENTRANCE/EXIT (GATE 3) PREMIUM/GA traffic entering from South Bound I-5. 1,000ft of stacking then split Premium/General.

SB- Ankeny Hill Exit 243>Ankeny Hill Rd.>Wintel Rd. S>ENTRANCE/EXIT (GATE 5) ADA traffic entering from South Bound I-5.

TRAFFIC CONTROL

Driver and public safety being of concern to Willamette Country Music Festival. West States Flagging will implement the traffic plan developed in cooperation with the Oregon Department of Transportation and Marion County Public Works. Prior to Event attendees will be issued color coded placards for easy visibility for flaggers to implement traffic flow. WCMC, LLC will also educate traffic options via Website, Social Media, E-Blasts, ROP Ads in Oregonian and Register Guard multiple times before Festival. Weststates flagging will incorporate multiple video messaging signs to direct, warn and educate traffic. Weststates is a Eugene based flagging company that primarily works with utility companies to implement traffic standards as directed by ODOT and/ or their reviewing authorities. (See attached traffic control plan).

FLAGGING – Entrance/Exits to Festival Site

All intersections and property entrances that require flaggers, as per the approved traffic plan, will be staffed with Weststates certified flaggers with all necessary equipment and signage to assure the safety of the flaggers and the public. Flaggers will be positioned so that those entering the site will be directed through general admission parking, VIP/Handicapped parking and the main road to all camping areas. Entrances/exits will be monitored 24 hours per day for the duration of the event by Security. All vehicles that enter the site will be directed to their appropriate parking or camping area depending upon their pass or accreditation. All law enforcement, fire and rescue vehicles will have priority use of the designated production entrance from the Ankeny Hill Road/I-5 interchange. 911 are monitored onsite at the Sheriff Command center by dispatchers who then dispatch according to incident, (i.e. Marion County Deputies, Paramedics, Security) during peak hours and by Paramedics during off-peak hours.

Date	Shift	Hours	Employees	Total Hours
Thursday of event	10AM – 11PM	13	11	143
Friday of event	9AM – 12AM	15	15	225
Saturday of event	9AM – 12AM	15	15	225
	3PM – 12AM	9	15	135
Sunday of event	9AM – 12AM	15	15	225
	3PM – 12AM	9	15	135
Monday day after	8AM – 12PM	4	12	48

All entrances will have multiple stacking lanes with Festival volunteer greeters checking credentials, festival information (includes map of venue, map of camping/parking, concert and camping rules) is made available on-line and in the festival app, so that campers have the information prior to arrival. Festival Greeters will direct them to their appropriate destination

CAMPING – Designated hosts will lead them to their designated camping space.

PARKING - Parkers will direct daily attendees to General Admission, VIP and Handicapped parking space.

FESTIVAL ATTENDANCE

- Willamette Country Music Concerts, LLC is anticipating the attendance for the 2019 festival to be capped at 30 thousand daily attendees. This number includes campers, ticketed attendees, and all support/volunteer personnel (see attached Production Traffic Comments for information regarding support/volunteer personnel).
- Nightly Attendance will be approximately, 10,000, which is based upon the number of camp spaces allocated for the event (maps attached) and an average occupancy of 2.5 people per campsite, based upon festival averages over the past five years. This on-site camping will make a significant difference in the amount of GA (daily) traffic. The camping spaces and Nightly Attendance numbers include designated camping spots for volunteers and vendors.

COMMUNICATION

WCMC, LLC will implement two-way radio communications with the CXMF President/Event Director, Operations Manager, Director of Event Planning, Parking, RV Issues Team Leader, Security/Beer Garden Coordinator, EMS Support/Medical, Liaison Officer, and Traffic Control for the 2019 and following Country Crossings Music Festivals. Security and Paramedics will have designated radio channels and the ability to communicate with Management Staff, Site Leaders, and Camp Hosts. Team Leaders will be responsible for monitoring their respective assigned radio frequency. Information placards providing a list of assigned channels (frequencies) and supervisor cell numbers will be provided to those Team

Leaders and Supervisors carrying radios. The festival Command Center (see Public Safety Plan) will monitor all communications to assure that incidents and emergency needs are responded to in an appropriate manner. 911 traffic shall be monitored by the Sheriff Command center which will operate during peak evening hours and by radios held by the Paramedics during off-peak hours.

PARAMEDICS AND FIRST AID

The festival venue will include a 40x40 foot first aid/medical tent (Emergency Medical Facilities as per ORS 433.760 and corresponding OAR 333-039-0040), signed in red letters with the word FIRST AID. The tents will be staffed with licensed Paramedics and Oregon licensed medical staff, with a list of the staff provided to the Marion County Health Department by August 1st. Staffing to be at State mandated levels with 1 physician per 10,000 people and 1 nurse per 7,500 people during daylight hours. During nighttime hours there will be 1 physician per 20,000 people and one nurse per 15,000 people. The number of people on site shall be monitored hourly by the use of RFID wristbands so that staffing can be adjusted based upon actual people on site. Equipment will include all standard first aid and emergency supplies necessary for a mass gathering. The emergency medical staff will be on-site 24 hours per day and will have two-way radio communications with event staff and security. The emergency medical staff will host at least 30 beds/cots for individuals needing medical attention or rest, or for the purposes of holding facilities for sick or injured awaiting transport.

The Paramedic team will be provided maps of the venue and camping areas to assist in their ability to respond quickly to emergencies. This team will arrive on-site with the proper personnel and equipment to provide triage as needed until rescue units can arrive. Ambulance service with a minimum of two ambulances during peak attendance hours will be contracted for the duration of the event. During the hours that attendance is incrementally over 20,000 a third ambulance will be placed on standby. A copy of the ambulance service contract will be provided to the Marion County Health Department before August 1st. A designated utility vehicle shall be available to the paramedics for response to camping areas.

Communication will be maintained at all times between festival staff, **Security Staff** and the paramedics/medical staff by radio and through the Command center. The paramedics will remain on site 24 hours a day during the duration of the festival, from 4pm Thursday of the event week through Monday 12:00 pm following the event each year.

An approved medical transport provider will provide medical transport for the event. Paramedics and responding transport will be provided with site maps indicating all camping areas so that they can respond to the appropriate camp site or area within the Festival grounds in a timely manner.

STRUCTURAL SAFETY:

The festival will work with the Marion County, submitting plans and engineering documents for approval for the stage constructed for use during the event by July 1. The requisite building permit/s, if required, be applied for and the stage/site construction schedule provided to the building officials.

PRIMARY EVENT CONTACTS:

Anne Hankins, President - Willamette Country Music Concerts, LLC	541-521-2457
Don Leber, Marketing Advertising Director – Bi Mart Corporation	541-554-7104
Tim Flowerday, Director of Operations – Willamette Country Music Concerts, LLC	541-908-0169
Taelor Dunn, Director of Event Planning – Willamette Country Music Concerts, LLC	541-517-7056
Mike Dunn, Operations Coordinator – Willamette Country Music Concerts, LLC	541-521-5034

If this mass gathering were granted by the Marion County Board of Commissioners, I approve of WCMC, LLC implementing the plan as described.

Signed, Marion County Health Department

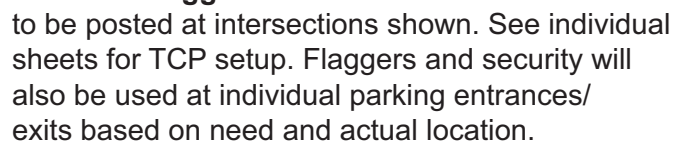
If this mass gathering were granted by the Marion County Board of Commissioners, I approve of WCMC, LLC implementing the plan as described.

Signed, Marion County Building Department

If this mass gathering were granted by the Marion County Board of Commissioners, I approve of WCMC, LLC implementing the plan as described.

Signed, Marion County Public Works

Traffic Plan Overview



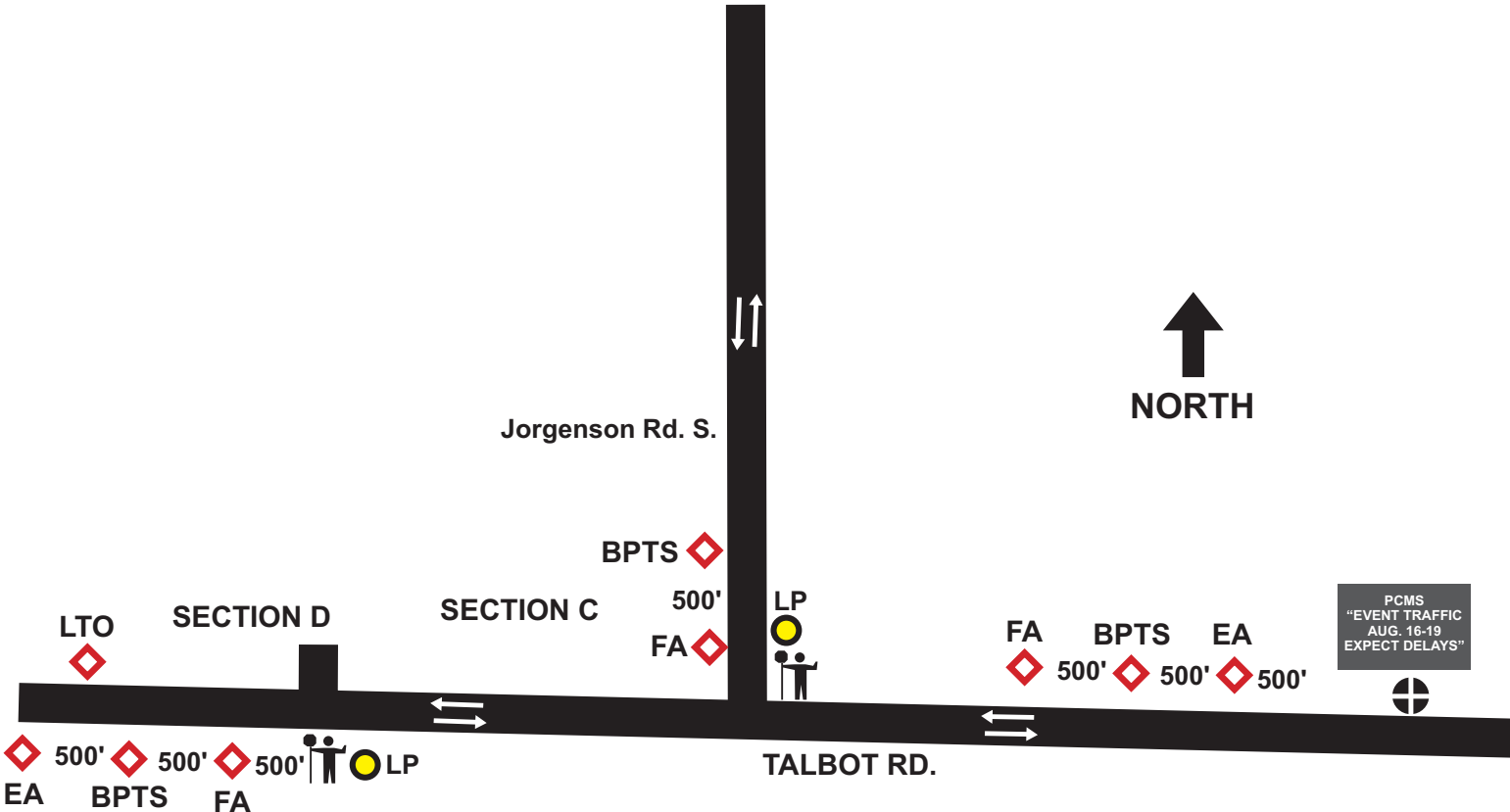
All PCMS to be placed 10 days prior to event date with the I-5 messages being changed as shown on the date of the event. I-5 PCMS to be placed approximately 2 miles North/South of respective exit ramps. Specific locations shall be agreed upon by ODOT, County and other appropriate authorities based on sight distance, visibility, safety, etc.

One lane of traffic shall always remain open at all times for emergency vehicles.

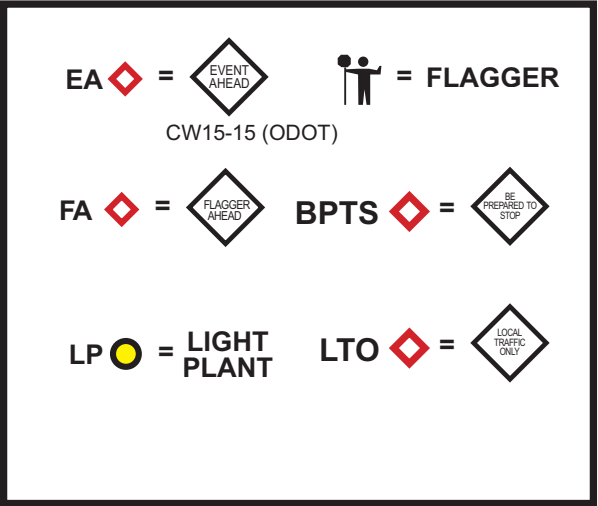
shall conform to the standards set forth in the MUTCD and the Oregon Temporary Traffic Control Handbook.

2019 Willamette Country Music Festival

Jorgenson and Talbot Intersection



This location will be tended at all times, by one or two people– depending on the need.
Illumination to be used only to light active flagging stations.



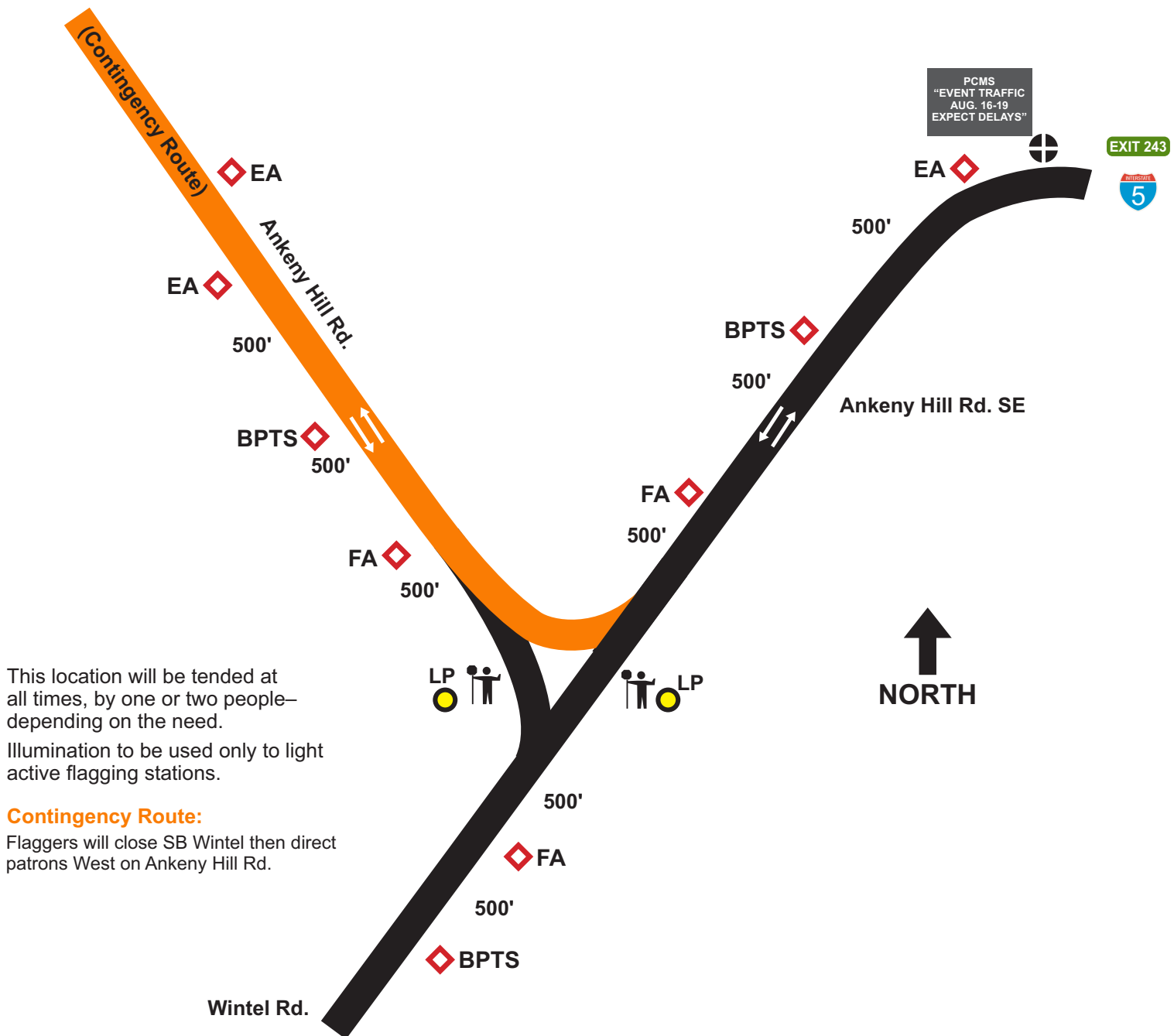
SIGN AND EQUIPMENT COUNT

Sign Spacing- 500'/ Sign Size- 36"

Event Ahead (EA)	2
Be Prepared to Stop (BPTS)	3
Flagger Ahead (FA)	3
Local Traffic Only (LTO)	1
Light Plants	2

2019 Willamette Country Music Festival

Ankeny and Wintel Intersection

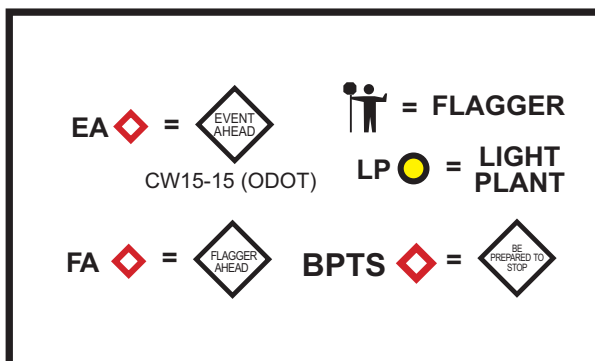


This location will be tended at all times, by one or two people—depending on the need.

Illumination to be used only to light active flagging stations.

Contingency Route:

Flaggers will close SB Wintel then direct patrons West on Ankeny Hill Rd.



SIGN AND EQUIPMENT COUNT

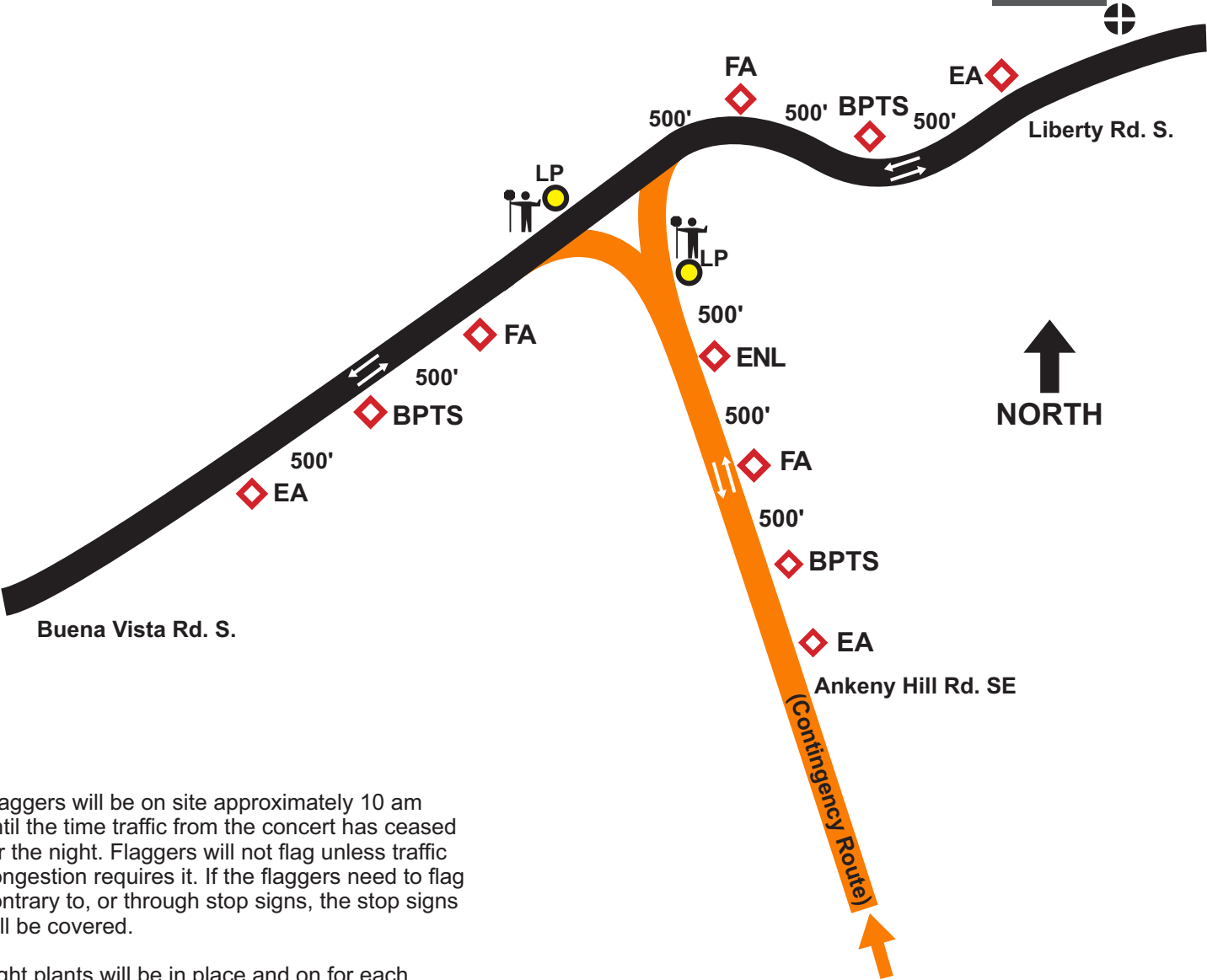
Sign Spacing- 500' / Sign Size- 36"

Event Ahead (EA)	3
Be Prepared to Stop (BPTS)	3
Flagger Ahead (FA)	3
PCMS	1
Light Plants	2

2019 Willamette Country Music Festival

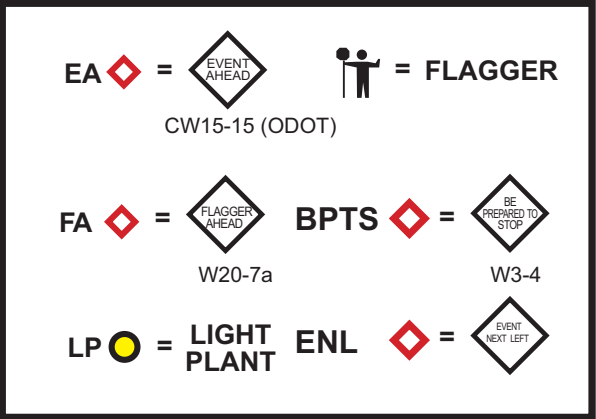
Buena Vista Rd. and Ankeny Hill Intersection

PCMS
"EVENT TRAFFIC
AUG. 16-19
EXPECT DELAYS"



Flaggers will be on site approximately 10 am until the time traffic from the concert has ceased for the night. Flaggers will not flag unless traffic congestion requires it. If the flaggers need to flag contrary to, or through stop signs, the stop signs will be covered.

Light plants will be in place and on for each flagger. All times will be reviewed daily and changed accordingly.

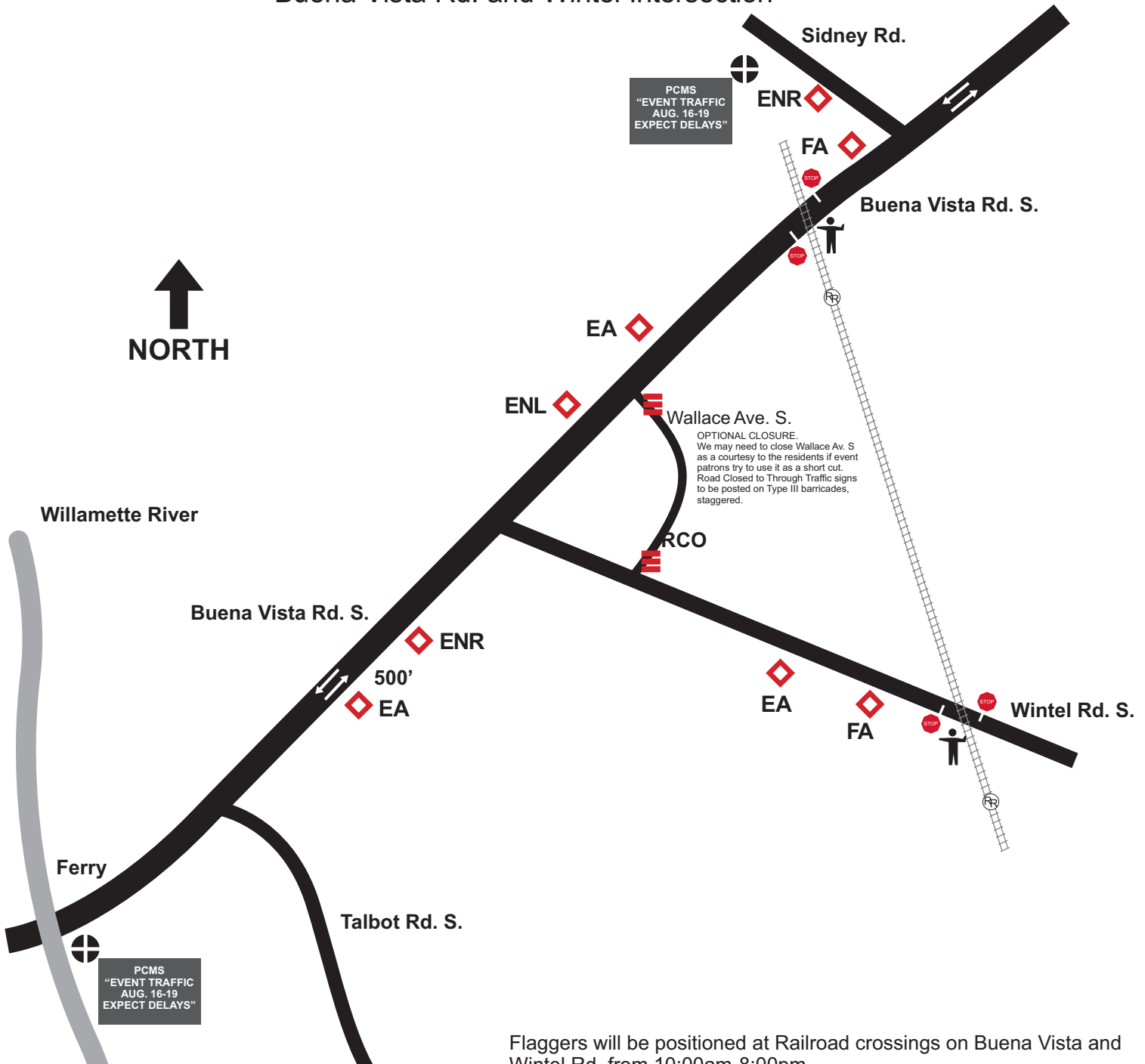


SIGN AND EQUIPMENT COUNT Sign Spacing- 500'/ Sign Size- 36"

Event Ahead (EA)	3	
Be Prepared to Stop (BPTS)	3	3
Flagger Ahead (FA)	3	1
Event Next Left (ENL)	1	
PCMS	1	
Light Plants	2	

2019 Willamette Country Music Festival

Buena Vista Rd. and Wintel Intersection

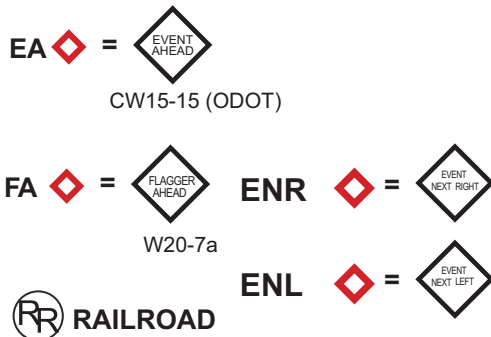


Flaggers will be positioned at Railroad crossings on Buena Vista and Wintel Rd. from 10:00am-8:00pm.

SIGN AND EQUIPMENT COUNT

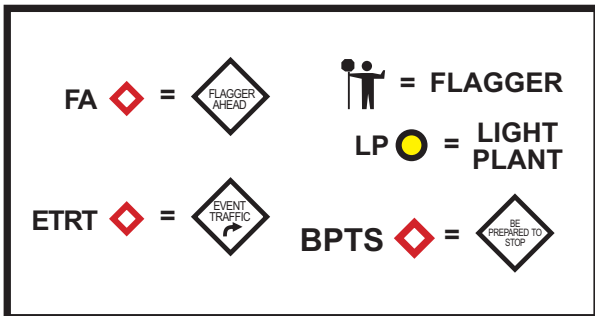
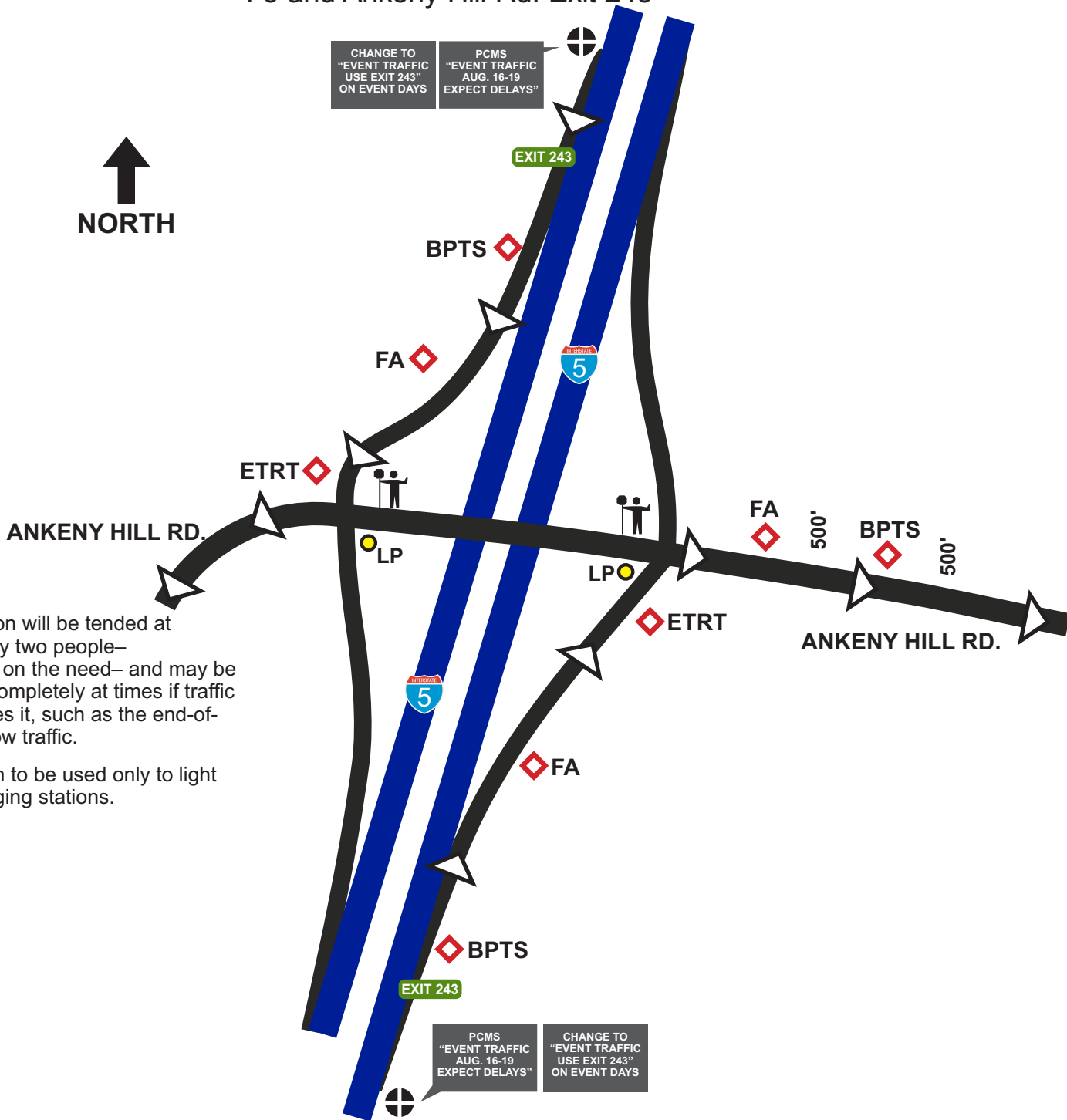
Sign Spacing- 500'/ Sign Size- 36"

Event Ahead (EA)	3
Flagger Ahead (FA)	2
Event Next Right (ENR)	2
Event Next Left (ENL)	1
Road Closed Local Traffic Only (RCO) Type III Barricade	2
PCMS	2



2019 Willamette Country Music Festival

I-5 and Ankeny Hill Rd. Exit 243



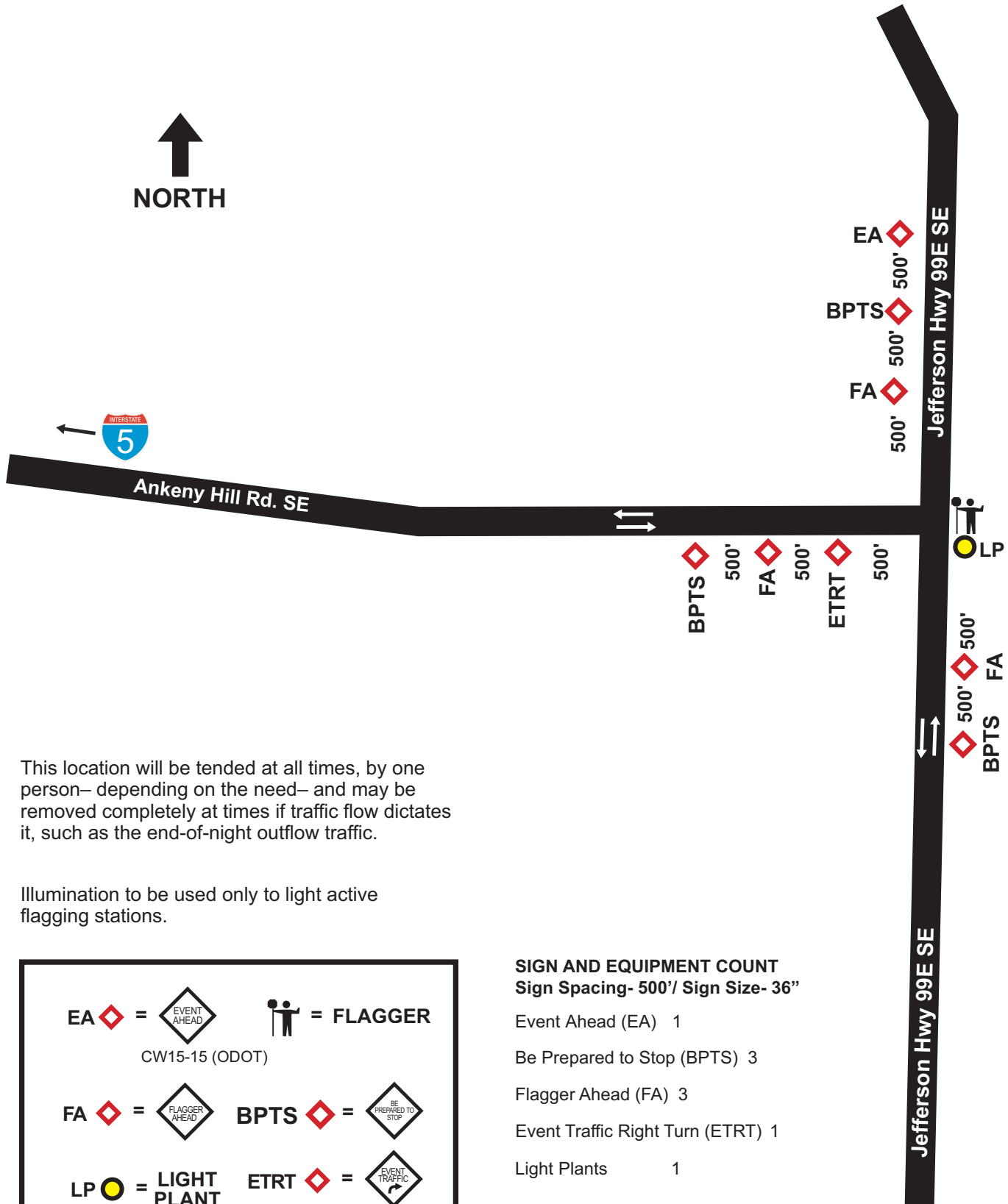
SIGN AND EQUIPMENT COUNT

Sign Spacing- 500' / Sign Size- 36"

Be Prepared to Stop (BPTS)	3
Flagger Ahead (FA)	3
PCMS	2
Light Plants	2

2019 Willamette Country Music Festival

Ankeny Hill Rd. SE & Jefferson Hwy 99E SE Intersection

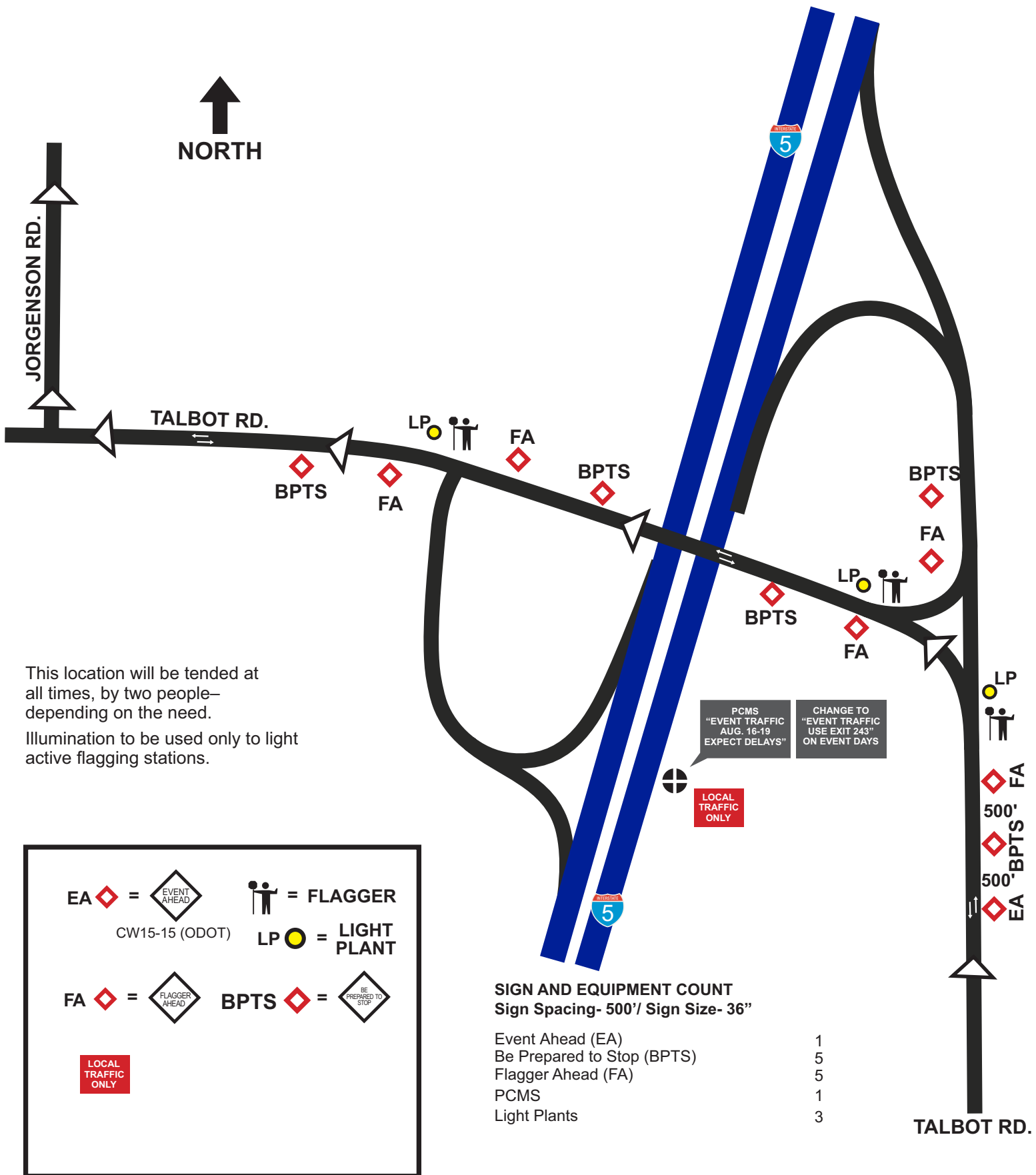


This location will be tended at all times, by one person– depending on the need– and may be removed completely at times if traffic flow dictates it, such as the end-of-night outflow traffic.

Illumination to be used only to light active flagging stations.

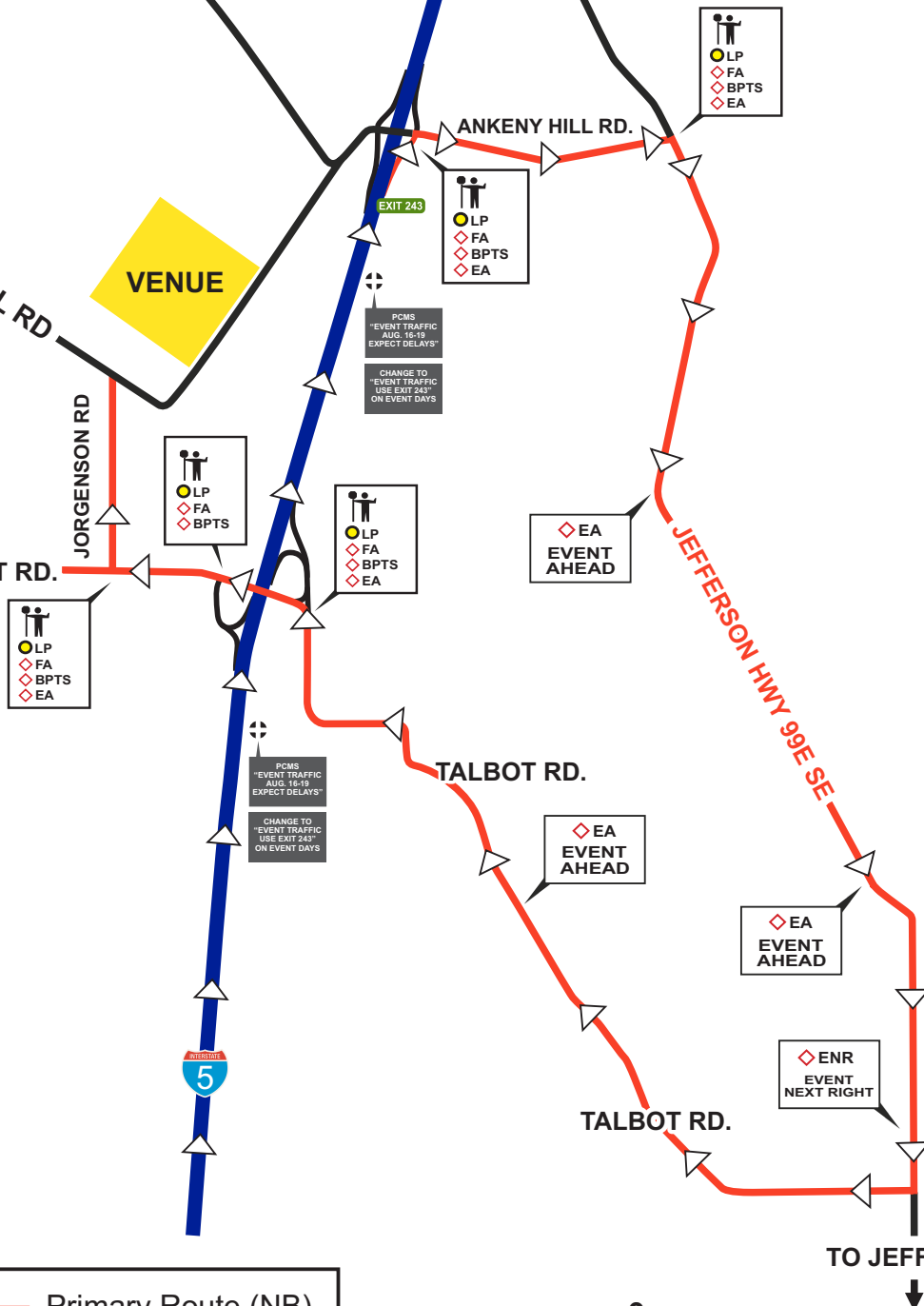
2019 Willamette Country Music Festival

I-5 and Talbot Rd. Exit 242



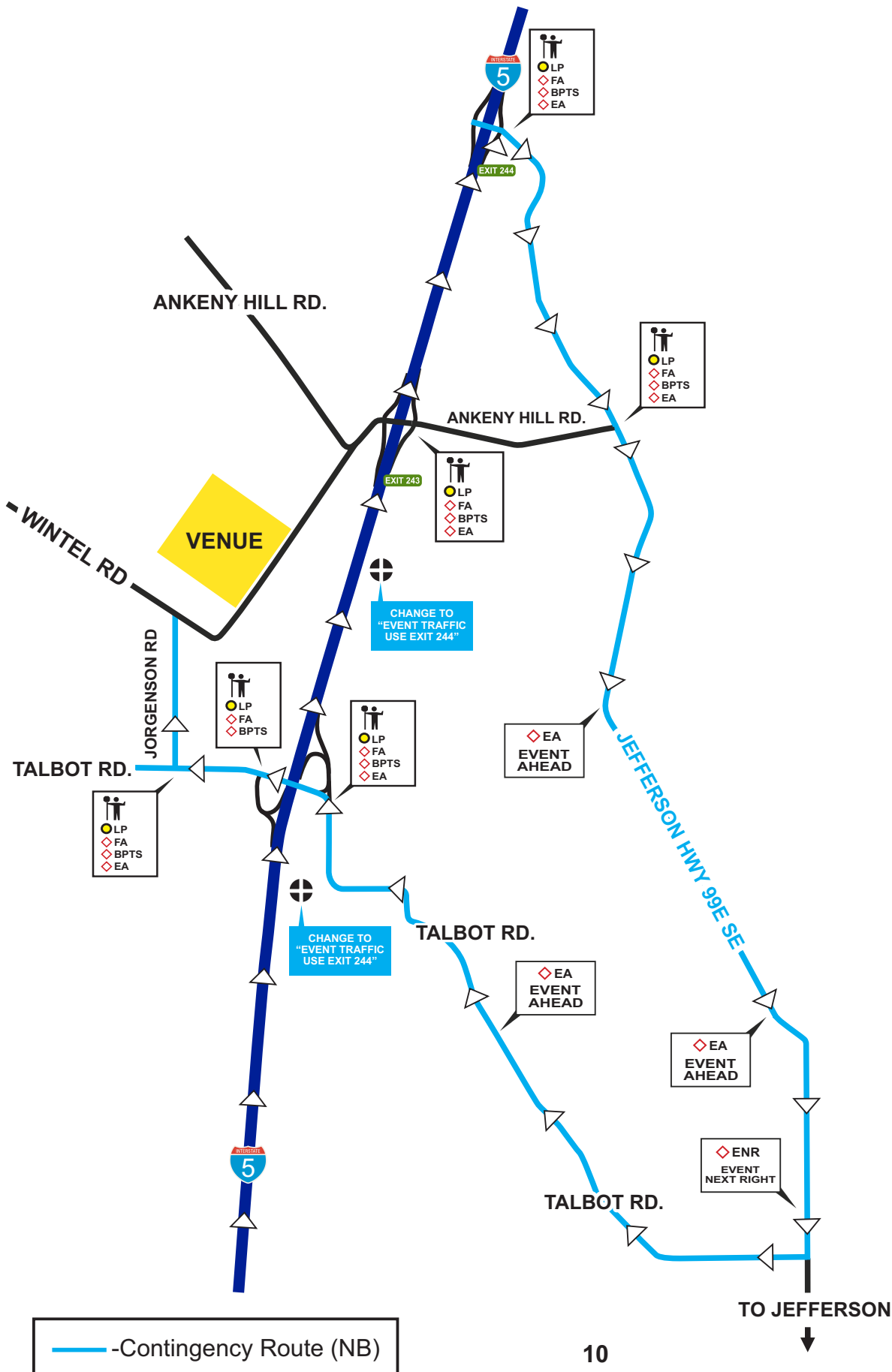
Northbound Primary Route (Exit 243)

Date: 4/5/18



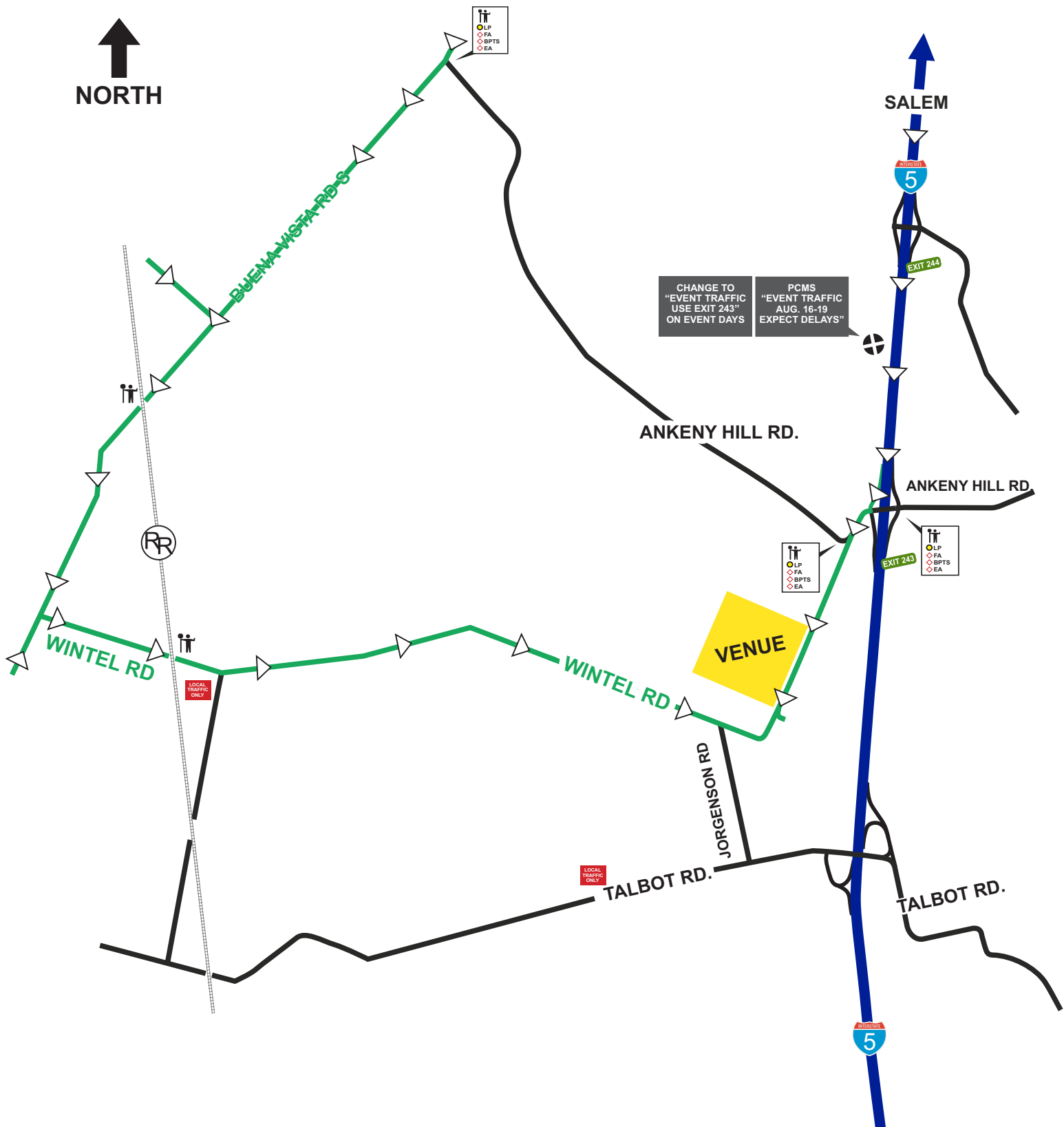
2019 Willamette Country Music Festival

Northbound Contingency Route (Exit 244)



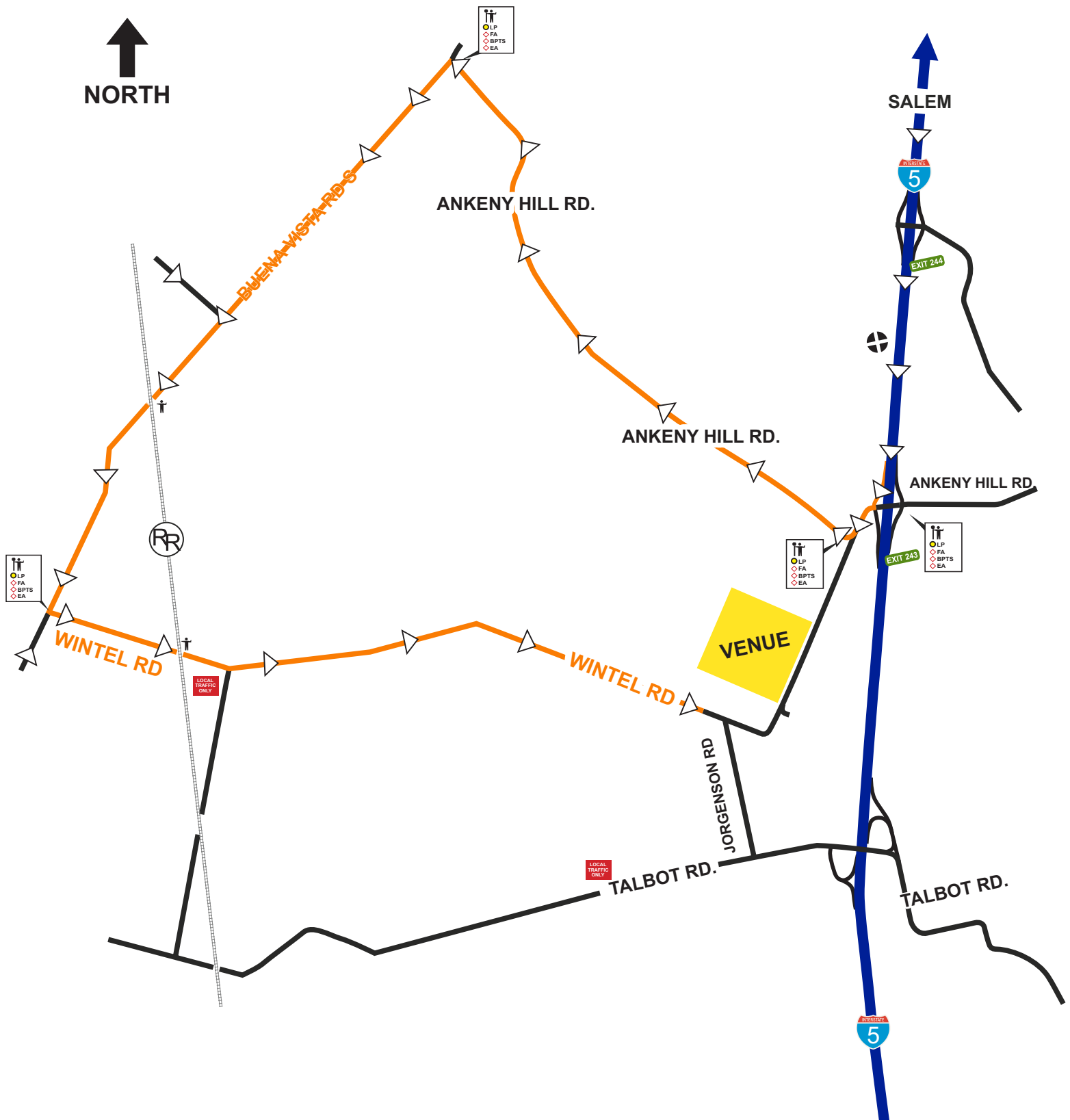
2019 Willamette Country Music Festival

Southbound Primary Route (Exit 243)



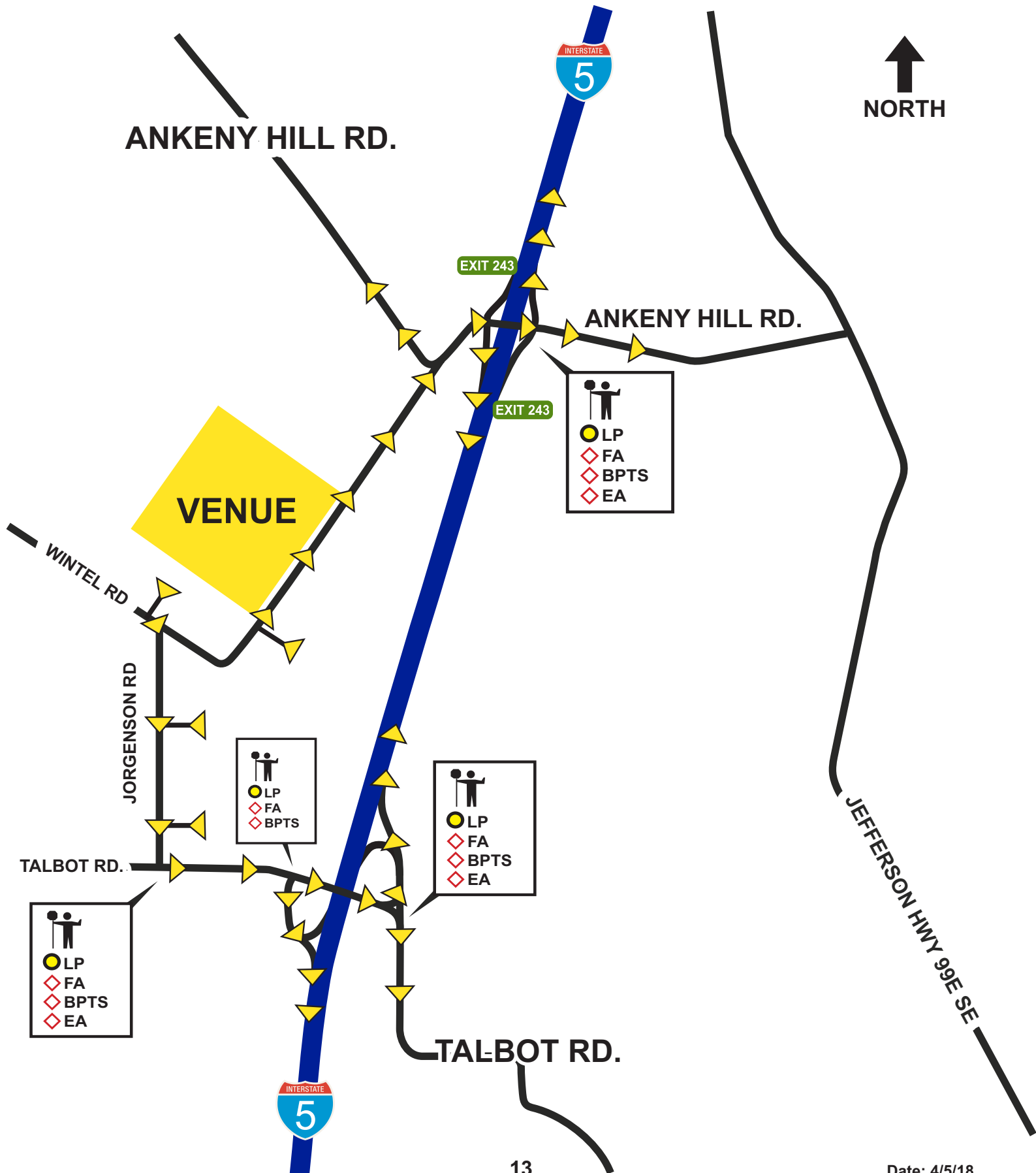
2019 Willamette Country Music Festival

Southbound Contingency Route (Ankeny Hill Rd.)

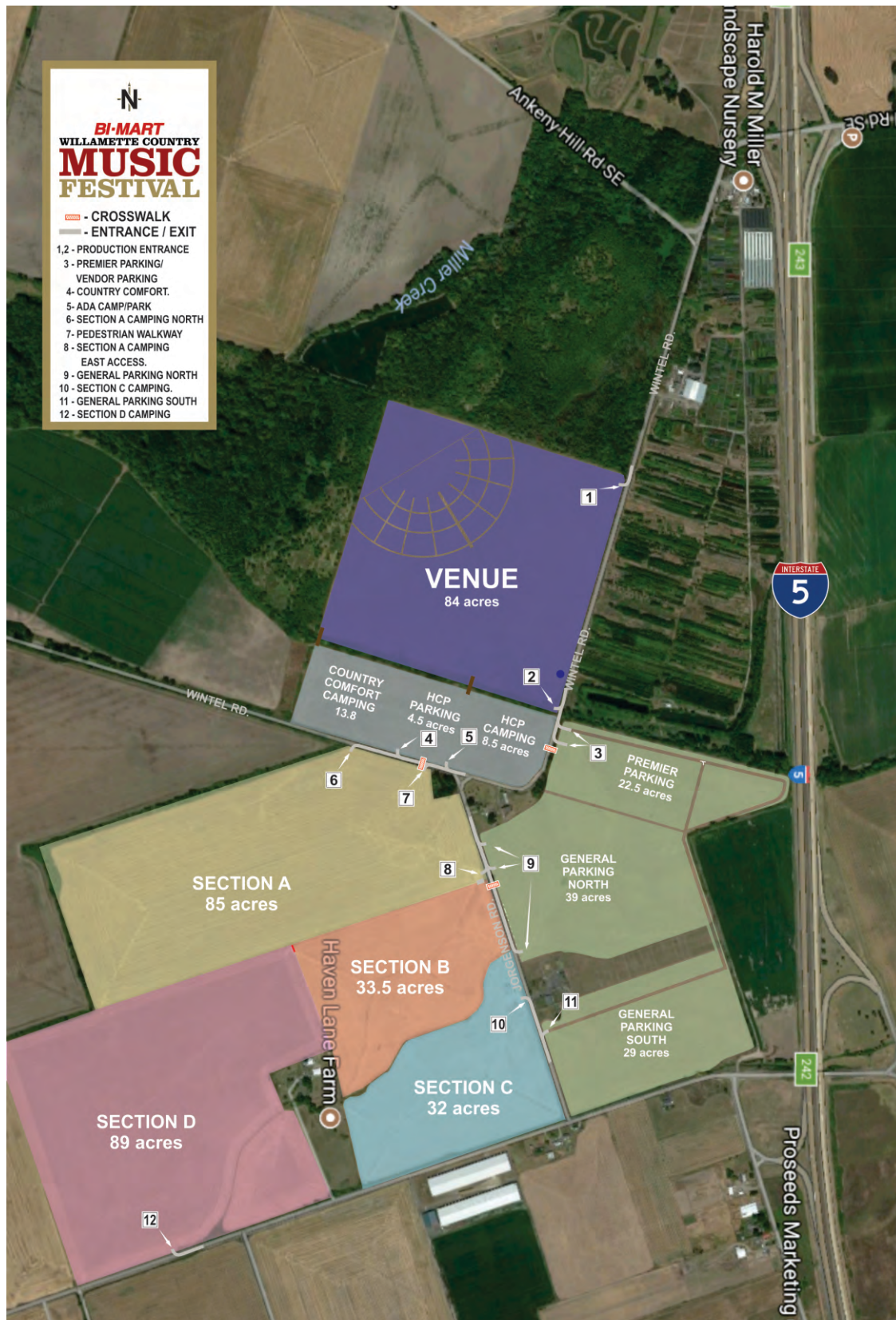


2019 Willamette Country Music Festival

Outbound Traffic



2019 Willamette Country Music Festival



“Flaggers will be located at all driveways to the parking lots and camping sections. Flaggers and Light Plants will be located at all pedestrian crossings of the county roads”

2018 Willamette Country Music Festival

Traffic Plan PCMS Signage

During the Event

2

E	V	E	N	T			
T	R	A	F	F	I	C	

3

U	S	E		E	X	I	T
2	4	2					

2018 Willamette Country Music Festival

Traffic Plan PCMS Signage

During the Event

1

	E	V	E	N	T		
T	R	A	F	F	I	C	
E	X	I	T		2	4	2

2018 Willamette Country Music Festival

Traffic Plan PCMS Signage

Prior to Event

A

E	V	E	N	T			
T	R	A	F	F	I	C	
A	U	G	1	6	-	1	9

B

E	X	P	E	C	T		
D	E	L	A	Y	S		
