



Date:	June 3, 2018
To:	Julia Uravich, PE, Marion County Traffic Engineer Casey Knecht, PE, ODOT Region 2
From:	Joe Bessman, PE and Del Huntington, PLS
Project Reference No.:	1117
Project Name:	Temporary Traffic Control Plans for the proposed 2019 Willamette Country Music Festival – Jefferson Oregon

As requested by Marion County Traffic Engineering staff and ODOT Region 2 Traffic Engineering staff, revisions have been made to the draft Temporary Traffic Control Plans (TTCP) for the proposed 2019 Willamette Country Music Festival (WCMF) to be held near Jefferson, Oregon. This memorandum is made a part of the TTCP and also serves to address additional items as requested by the two agencies as subsequently discussed with Marion County and ODOT Region 2 staff.

MARION COUNTY COMMENTS

The following modifications and revised guidance has been provided by Marion County and incorporated into the TTCP:

- Raised pavement markings on the centerline of Jorgenson Road will not be required. The WCMF team will leave flagging station roadway lights along Jorgenson Road illuminated throughout the nighttime hours. These light stations are located at all major entrances and crossings.
- County staff, through a “Marion County Public Works operations work order” will install nine flex posts with reflectors at the Jorgenson Road/Talbot Road intersection as shown in the attached TTCP. Costs for the installation will be provided by the WCMF.
- Various temporary sign post/stands will be allowed on the county road network. The actual type of sign stand for each location will be identified as part of the Marion County Right to Work in the Right of Way permit process that will occur in 2019.
- The temporary sign stands will be placed to ensure that signs:
 - do not encroach on or impede the travel lanes;
 - do not tip over in the wind;
 - are readily able to implement if contingency routes are needed;
 - have adequate height to be visible to motorists, to include the location being elevated above the ditch, grass, or other vegetation; and,
 - provide a minimum of a one-foot clearance between sign and pavement.
- Temporary sign stands include the four following types:
 1. A Portable Support is typically 4-feet wide by 12-feet in length for a 36-inch by 36-inch sign and up to 20 inches in height to provide a minimum of a 1-foot clearance above the roadway surface. The stand is adjustable and can be located on flat and sloped surfaces.
 2. A Wind Master fully extended is 5-foot, 4-inches in width by 12-feet in length with a mast height adjustable between 5-feet and 9-feet for a 36-inch by 36-inch sign. The stand can be employed where there are narrow shoulders adjacent to dry ditches or adjacent fields.

A larger version is available with a larger base and taller mast that would be appropriate where the adjacent ground is 7-feet or less in elevation difference (see attached drawing 4884KET with dimensions for a 48-inch by 48-inch sign).

3. ODOT approved temporary sign support “TSS” per ODOT standard TM821 (see attached). The support has a relatively small foot print and can be used successfully with narrow shoulders. This type of sign support does not work well on slopes.
4. Telespar Sleeve installation: The attached WSDOT standard detail (ST-2) is similar to the proposed installation for the Festival. The Telespar sleeve can be installed much quicker than a wood post and eliminates the need for sign covers as the sign can be easily turned away from traffic.

Specific measures and criteria related to the selection of these sign supports is summarized below:

- With the exception of the Telespar Sleeve installation, all sign stands will be weighted with sand bags to prevent tripping.
- Portable stands can be deployed quickly and are easily turned when the sign is not required, or to immediately implement a contingency route if necessary. A benefit of the Telespar Sleeve installation is that it allows the sign to be easily turned to face traffic or be oriented 90-degrees to the traffic flow when not in use. This saves time compared to other measures such as “bagging” signs.
- Signs shall be placed, and field adjusted based on the line of sight conditions.
- Where temporary sign stands #1 to #3 cannot be adequately installed due to topography or other local conditions, support type #4, the Telespar Sleeve installation will used. This sign is suitable in all locations but does require utility locates prior to drilling the sleeve.

ODOT REGION 2 TRAFFIC

Marion County staff requested that the northbound I-5/Talbot Road interchange off-ramp, Exit 242 be closed during the highest ingress hours of vehicular traffic during the four-day Festival to preserve the integrity of the primary route. In subsequent conversations with ODOT Region 2 Traffic Engineering staff, it is understood that:

- ODOT is not opposed to the closure of the northbound I-5 off-ramp at the Talbot Road interchange during the peak hours of the Festival ingress traffic for the four-day event.
- When the northbound off-ramp at Exit 242 is closed, all traffic will remain on I-5 northbound and exit at Exit 243, Ankeny Hill Road SE. Local traffic destined to points west of I-5 will be directed left via flaggers at the off-ramp terminal, then proceed west and south along Ankeny Hill Road, with options to use westbound Wintel Road, or travel on Jorgenson Road south to Talbot Road.
- The off-ramp closure does not require the approval of the Federal Highway Administration (FHWA), though it requires that FHWA be provided advance notice.
- Notice of the closure to the State Motor Carrier Division will be required.
- Portable Changeable Message Signs (PCMS) will be required on I-5 north and south of Exit 242 to notify motorists of the ramp closure, with dates and times, one week prior to the event.
- The TTCP is based on the available information we have at this time. Upon obtaining and/or learning of specific information, ODOT retains the right to require revisions to the TTCP. The intent is not to dramatically modify the TTCP.

ODOT RAIL DIVISION AND PORTLAND AND WESTERN RAILROAD

Based on communications from Marion County staff who held a meeting with representatives from ODOT Rail Division and Portland and Western Railroad, (PNWR), it is understood that two railroad crossings, one on Buena Vista Road, and the other on Wintel Road, will require PNWR flaggers to be available in standby mode. The PNWR flaggers will be engaged when the I-5 southbound contingency route is required. The PNWR will instruct a WCMF flagger when to stop vehicular traffic on the county road, and when the crossing may be reopened to motorists based on train traffic.

We trust that this information provides adequate documentation to respond to ODOT and Marion County comments on the Temporary Traffic Control Plans for the Willamette Country Music Festival. Please let me know if you have any questions via email at joe@transightconsulting.com or phone at (503) 997-4473.

Attachments:

- Revised Temporary Traffic Control Plans
- ODOT Standard Drawing TM821
- WSDOT Telespar Sleeve Detail
- Schematic Sign Support Detail

2019 Willamette Country Music Festival

Traffic Plan Overview



PCMS Note

All PCMS to be placed 10 days prior to event date with the I-5 messages being changed as shown on the date of the event. I-5 PCMS to be placed approximately 2 miles North/South of respective exit ramps. Specific locations shall be agreed upon by ODOT, County and other appropriate authorities based on sight distance, visibility, safety, etc. per Oregon Portable Changeable Message Sign Handbook September 2013.

PCMS Placements 9 Total (3-Marion County, 6-ODOT).

Emergency Vehicles

One lane of traffic shall always remain open at all times for emergency vehicles.

All Traffic Control

shall conform to the standards set forth in the MUTCD and the Oregon Temporary Traffic Control Handbook.

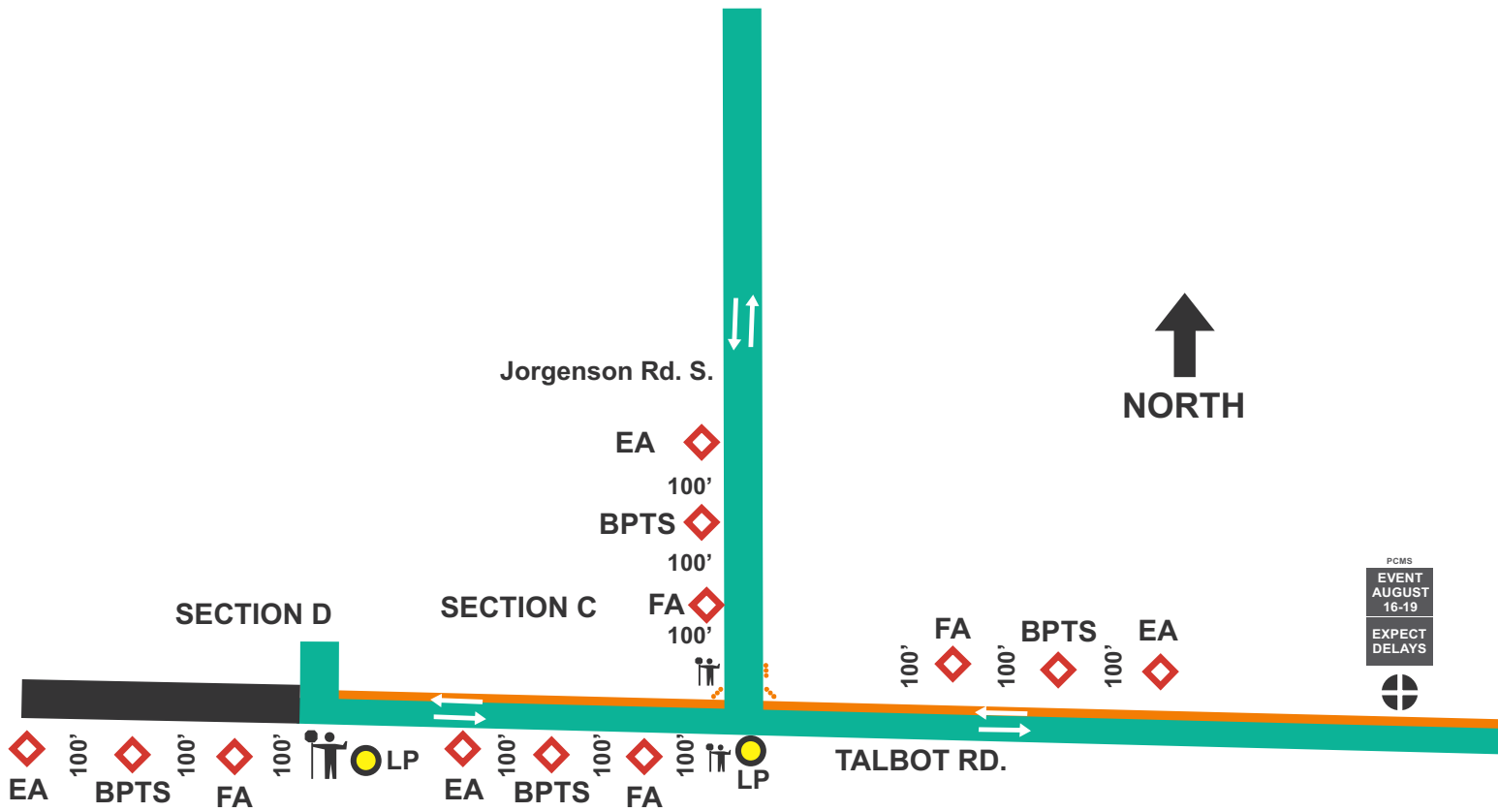
Certified Flaggers

to be posted at intersections shown. See individual sheets for TCP setup. Flaggers and security will also be used at individual parking entrances/exits based on need and actual location.

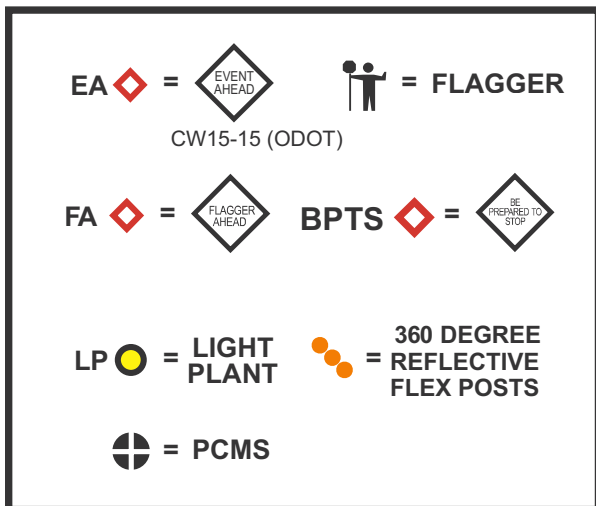
- -Primary Ingress Routes
- -Contingency Ingress Routes

2019 Willamette Country Music Festival

Jorgenson and Talbot Intersection



This location will be tended at all times, depending on the need– and may be removed completely at times if traffic flow dictates it, such as the end-of-night outflow traffic.



SIGN AND EQUIPMENT COUNT Sign Spacing- 100' Sign Size- 36"

Event Ahead (EA)	4
Be Prepared to Stop (BPTS)	4
Flagger Ahead (FA)	4
Light Plants	2
PCMS	1

2019 Willamette Country Music Festival

Ankeny and Wintel Intersection

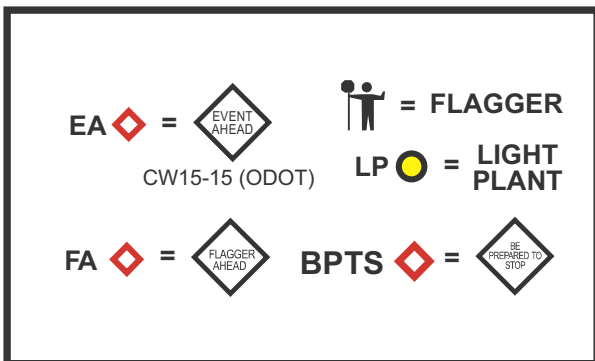


This location will be tended at all times, depending on the need— and may be removed completely at times if traffic flow dictates it, such as the end-of-night outflow traffic.

Illumination to be used only to light active flagging stations.

Southbound Contingency Route:

Flaggers will direct traffic West on Ankeny Hill Rd.



SIGN AND EQUIPMENT COUNT

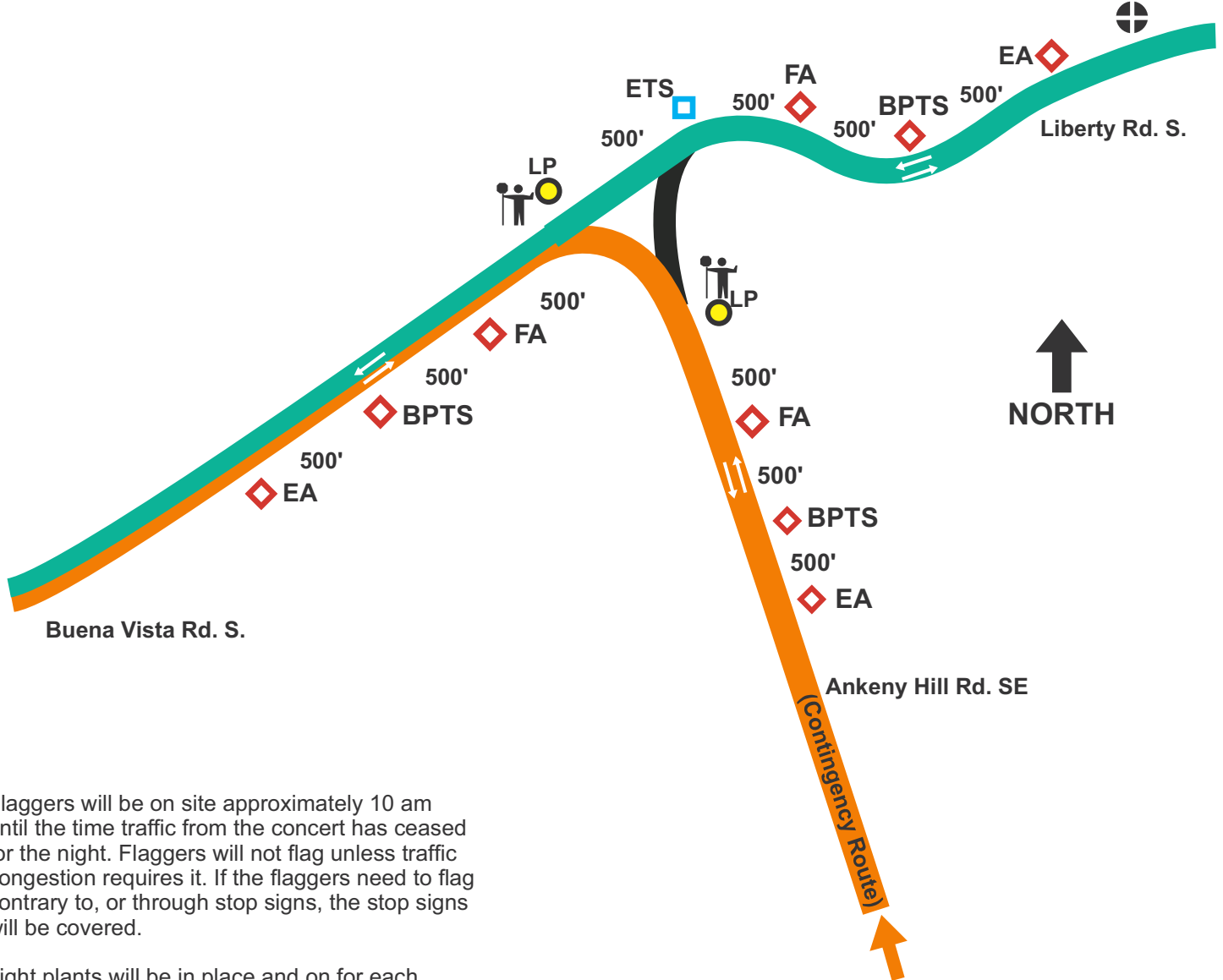
Sign Spacing- 100' / Sign Size- 36"

Event Ahead (EA)	3
Be Prepared to Stop (BPTS)	3
Flagger Ahead (FA)	3
Light Plants	2

2019 Willamette Country Music Festival

Buena Vista Rd. and Ankeny Hill Intersection

PCMS
EVENT
AUGUST
16-19
EXPECT
DELAYS



Flaggers will be on site approximately 10 am until the time traffic from the concert has ceased for the night. Flaggers will not flag unless traffic congestion requires it. If the flaggers need to flag contrary to, or through stop signs, the stop signs will be covered.

Light plants will be in place and on for each flagger. All times will be reviewed daily and changed accordingly.

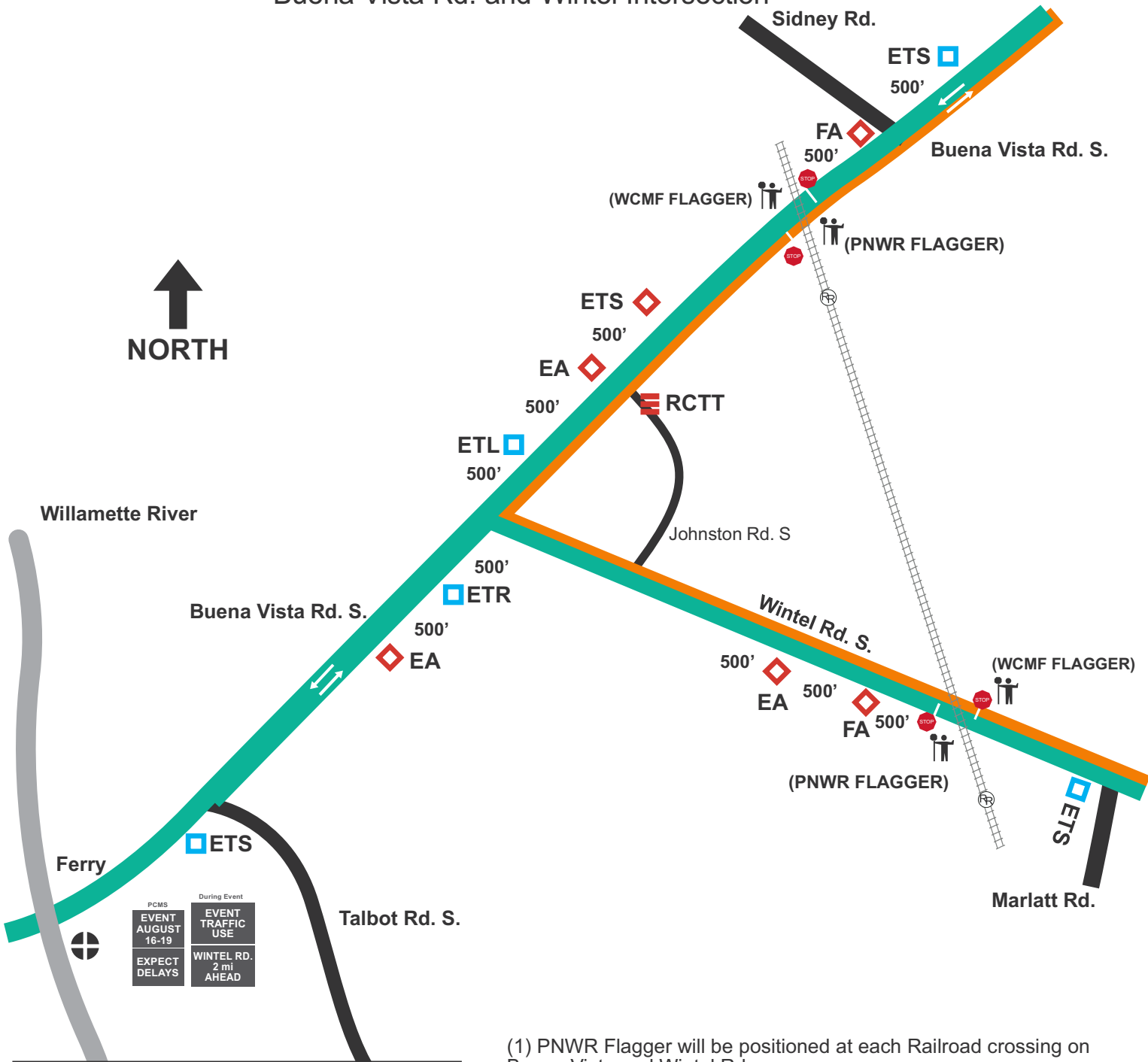
EA		=		FLAGGER	
					CW15-15 (ODOT)
FA		=		BPTS	
					W20-7a
					W3-4
LP		=		ETS	
					EVENT TRAFFIC

SIGN AND EQUIPMENT COUNT Sign Spacing- 500'/ Sign Size- 36"

Event Ahead (EA)	3	
Be Prepared to Stop (BPTS)		3
Flagger Ahead (FA)		3
Event Traffic Arrow Straight		1
PCMS		1
Light Plants	2	













2019 Willamette Country Music Festival

Buena Vista Rd. and Wintel Intersection



PCMS
EVENT AUGUST 16-19
EXPECT DELAYS

During Event
EVENT TRAFFIC USE
WINTEL RD. 2 mi AHEAD

EA  = 	ETS  = 
FA  = 	ETR  = 
 RAILROAD	ETL  = 
	LP  = LIGHT PLANT

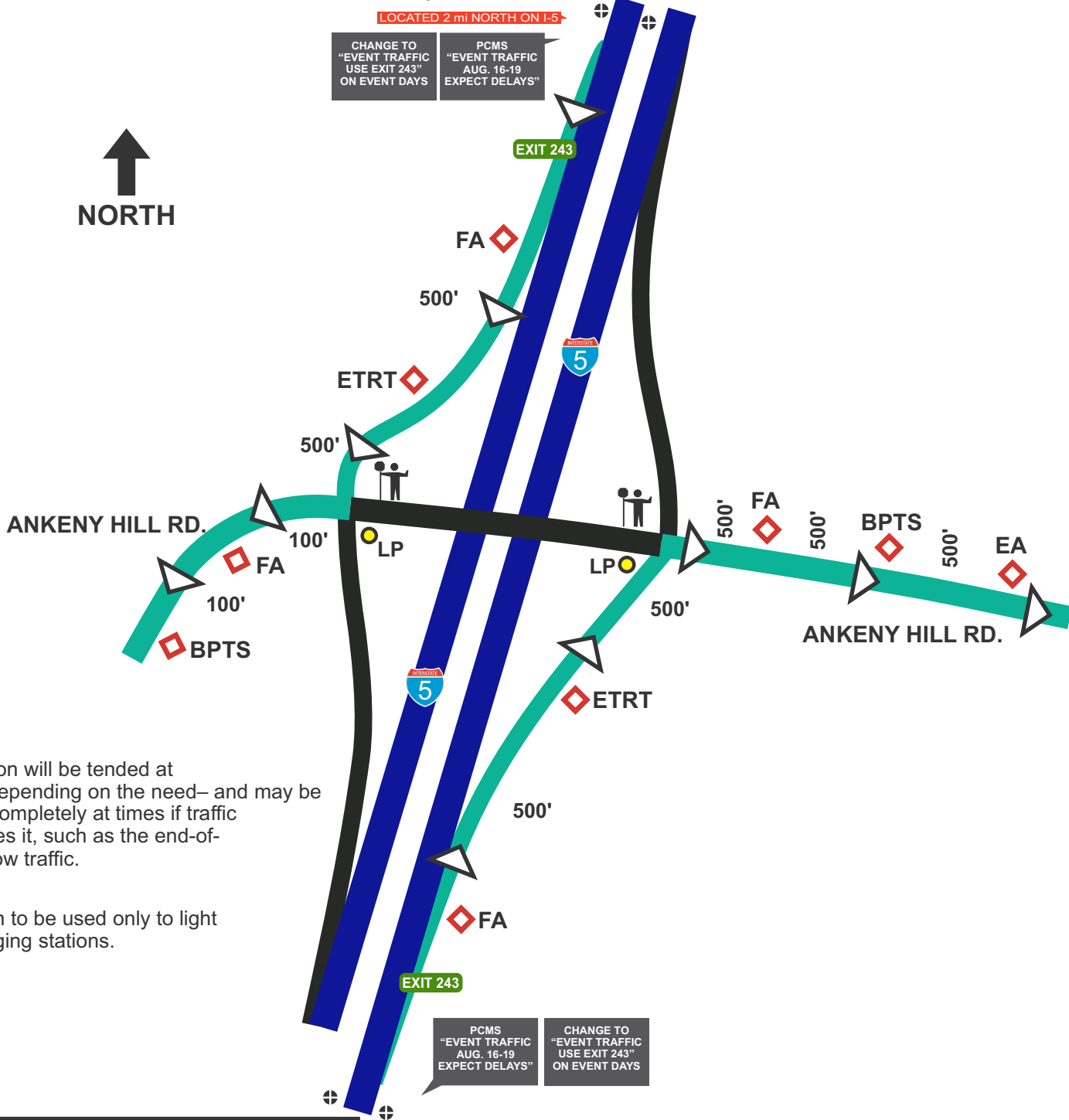
(1) PNWR Flagger will be positioned at each Railroad crossing on Buena Vista and Wintel Rd.

SIGN AND EQUIPMENT COUNT Sign Spacing- 500' / Sign Size- 36"

Event Ahead (EA)	3
Flagger Ahead (FA)	2
CLOSED TO THROUGH TRAFFIC (RCO) Type III Barricade	1
EVENT TRAFFIC ARROW STRAIGHT	3
EVENT TRAFFIC ARROW RIGHT	1
EVENT TRAFFIC ARROW LEFT	1
PCMS	1
LIGHT PLANT	2

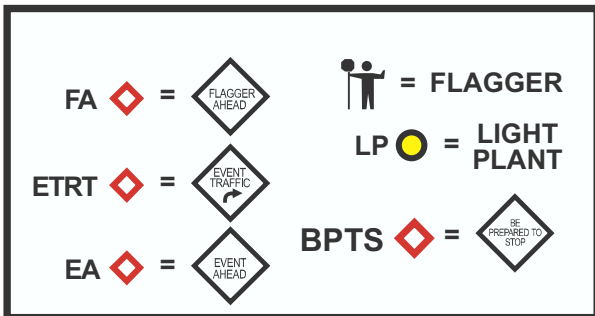
2019 Willamette Country Music Festival

I-5 and Ankeny Hill Rd. Exit 243



This location will be tended at all times, depending on the need— and may be removed completely at times if traffic flow dictates it, such as the end-of-night outflow traffic.

Illumination to be used only to light active flagging stations.



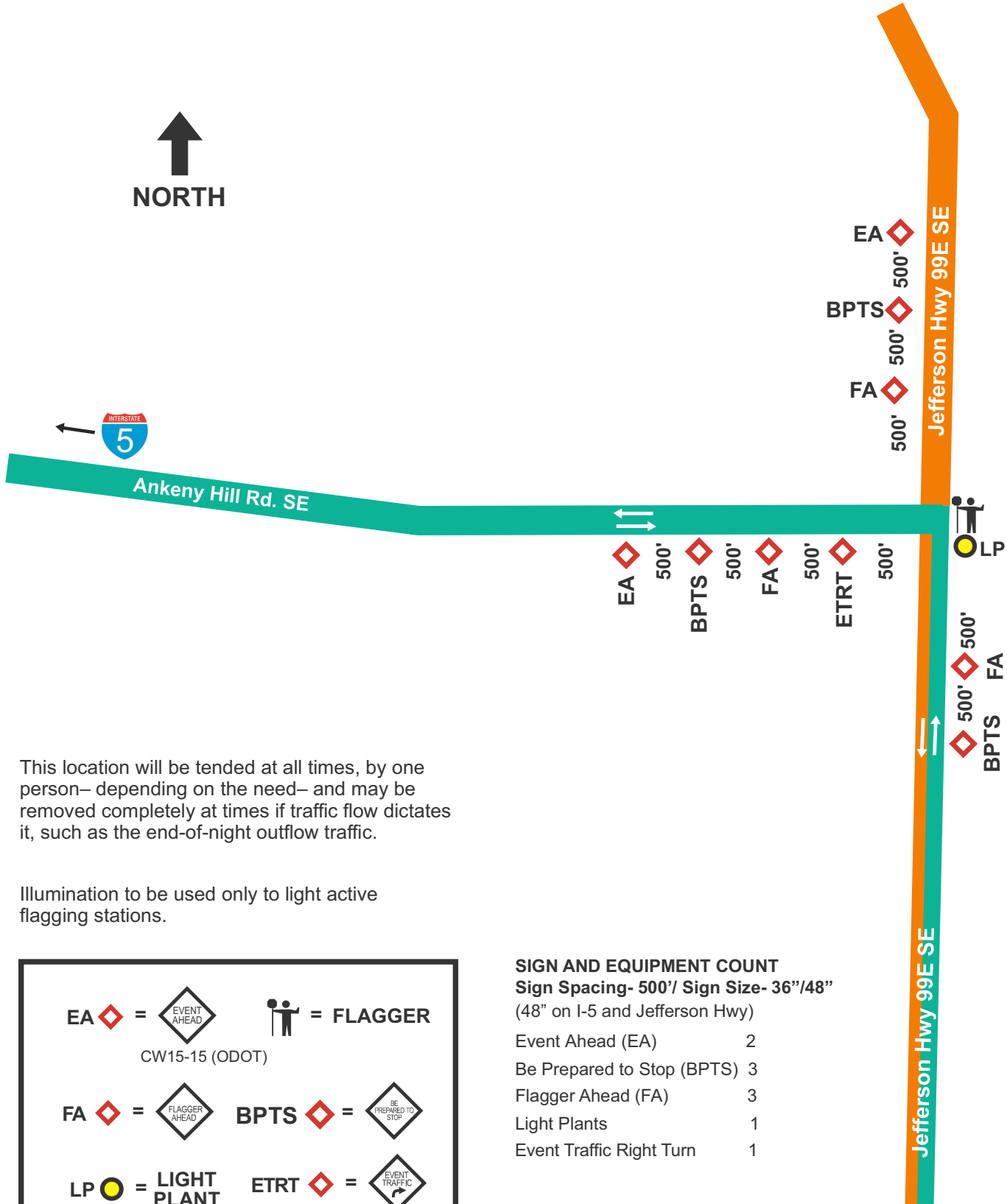
SIGN AND EQUIPMENT COUNT

Sign Spacing-100'/500', Sign Size- 36"/48"
(48" on I-5 and Jefferson Hwy)

Be Prepared to Stop (BPTS)	(2)-36", (2)-48"
Flagger Ahead (FA)	(2)-36", (2)-48"
Event Ahead (EA)	(1)-36"
PCMS	4
Light Plants	2

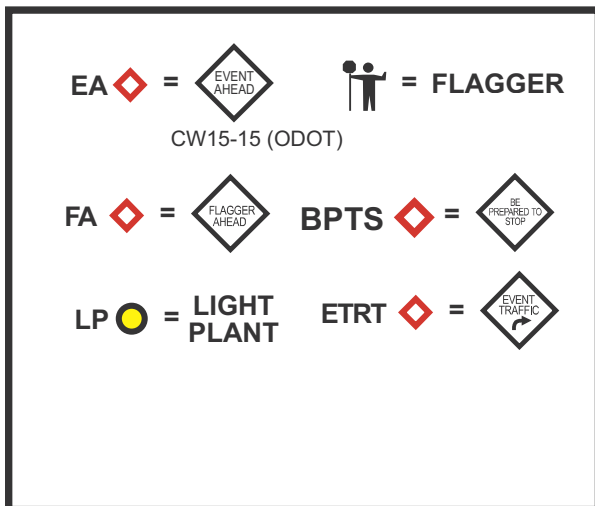
2019 Willamette Country Music Festival

Ankeny Hill Rd. SE & Jefferson Hwy 99E SE Intersection



This location will be tended at all times, by one person— depending on the need— and may be removed completely at times if traffic flow dictates it, such as the end-of-night outflow traffic.

Illumination to be used only to light active flagging stations.

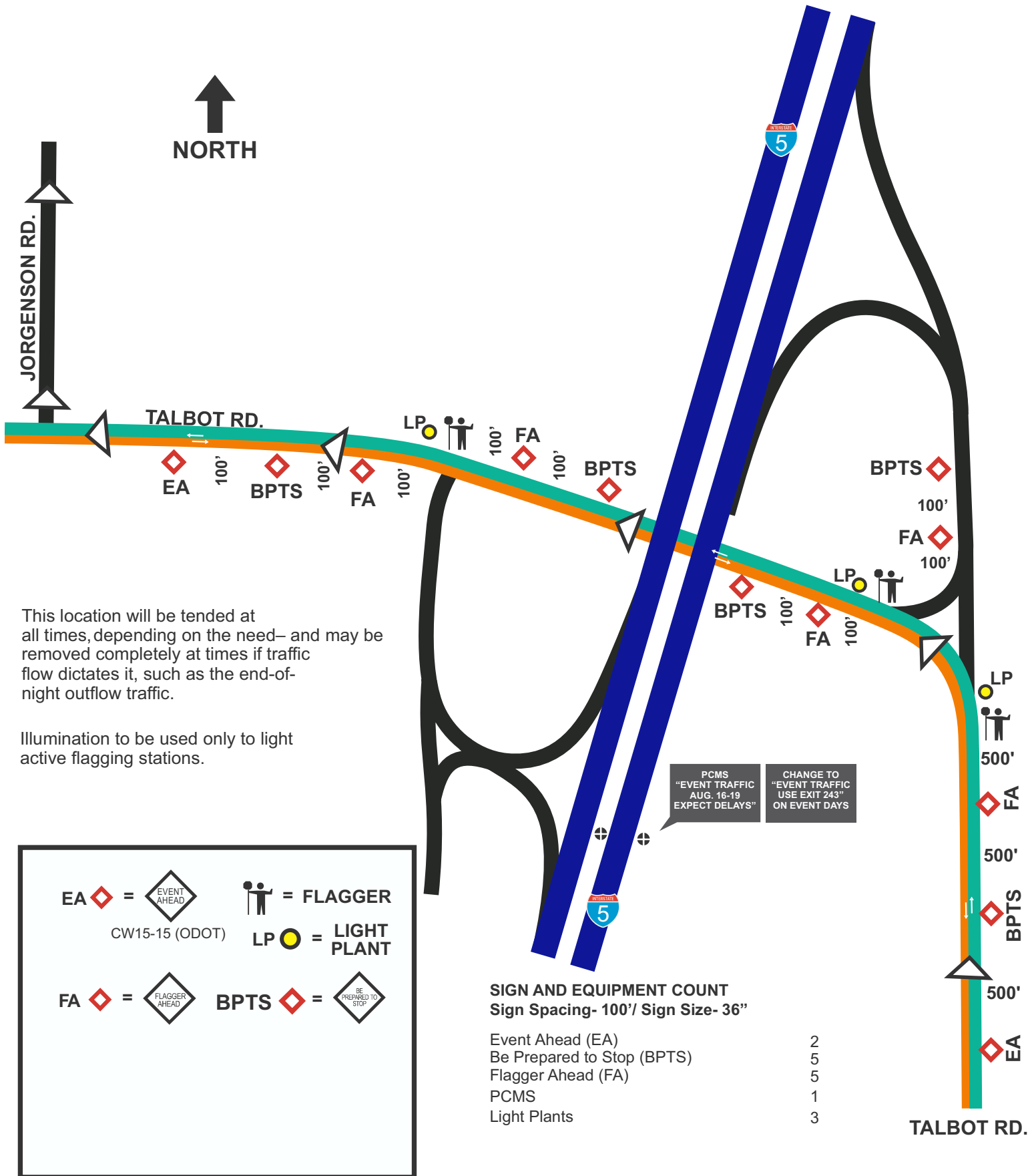


SIGN AND EQUIPMENT COUNT
Sign Spacing- 500'/ Sign Size- 36"/48"
 (48" on I-5 and Jefferson Hwy)

Event Ahead (EA)	2
Be Prepared to Stop (BPTS)	3
Flagger Ahead (FA)	3
Light Plants	1
Event Traffic Right Turn	1

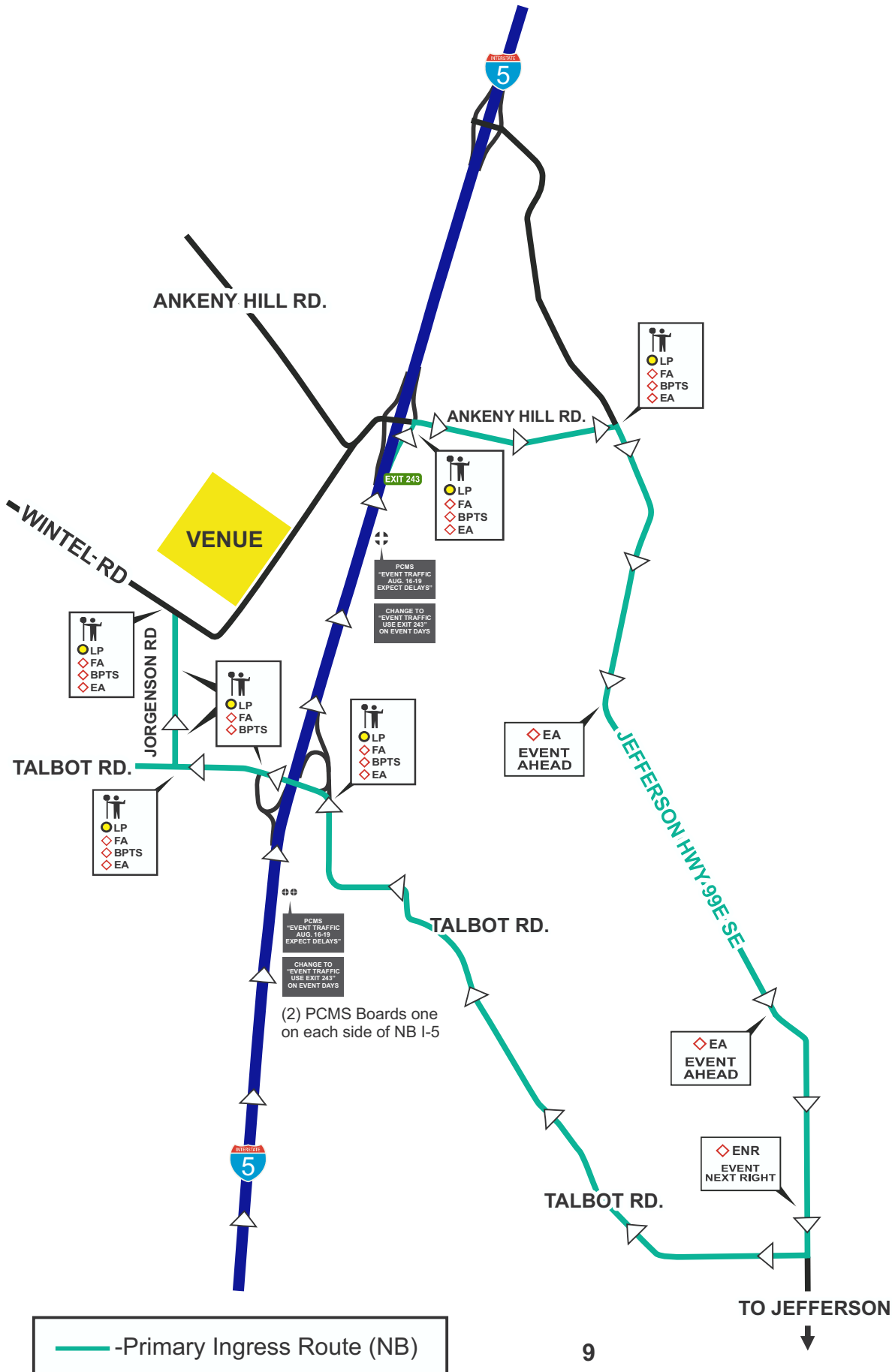
2019 Willamette Country Music Festival

I-5 and Talbot Rd. Exit 242



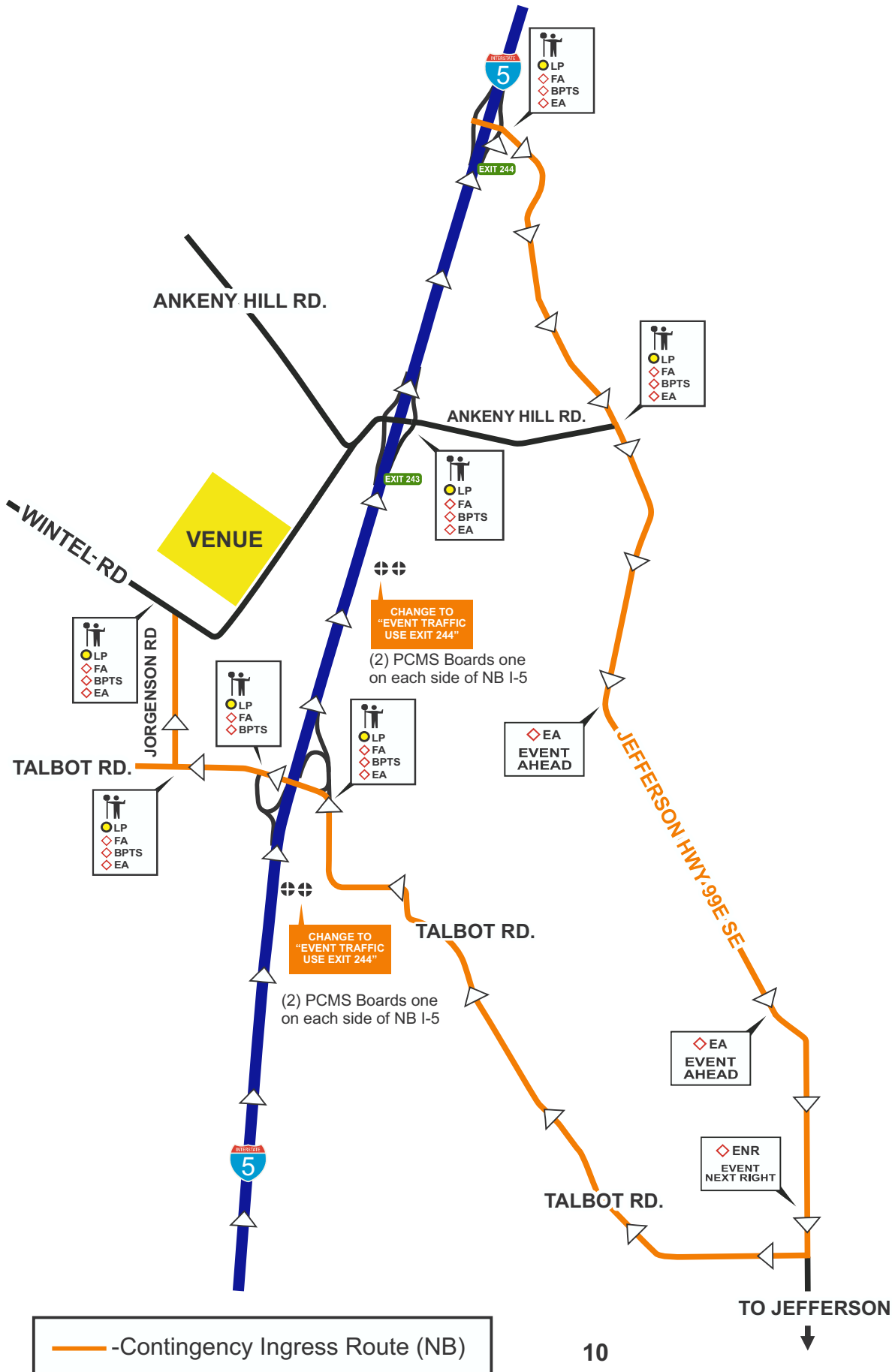
2019 Willamette Country Music Festival

Northbound Primary Ingress Route I-5 (Exit 243)



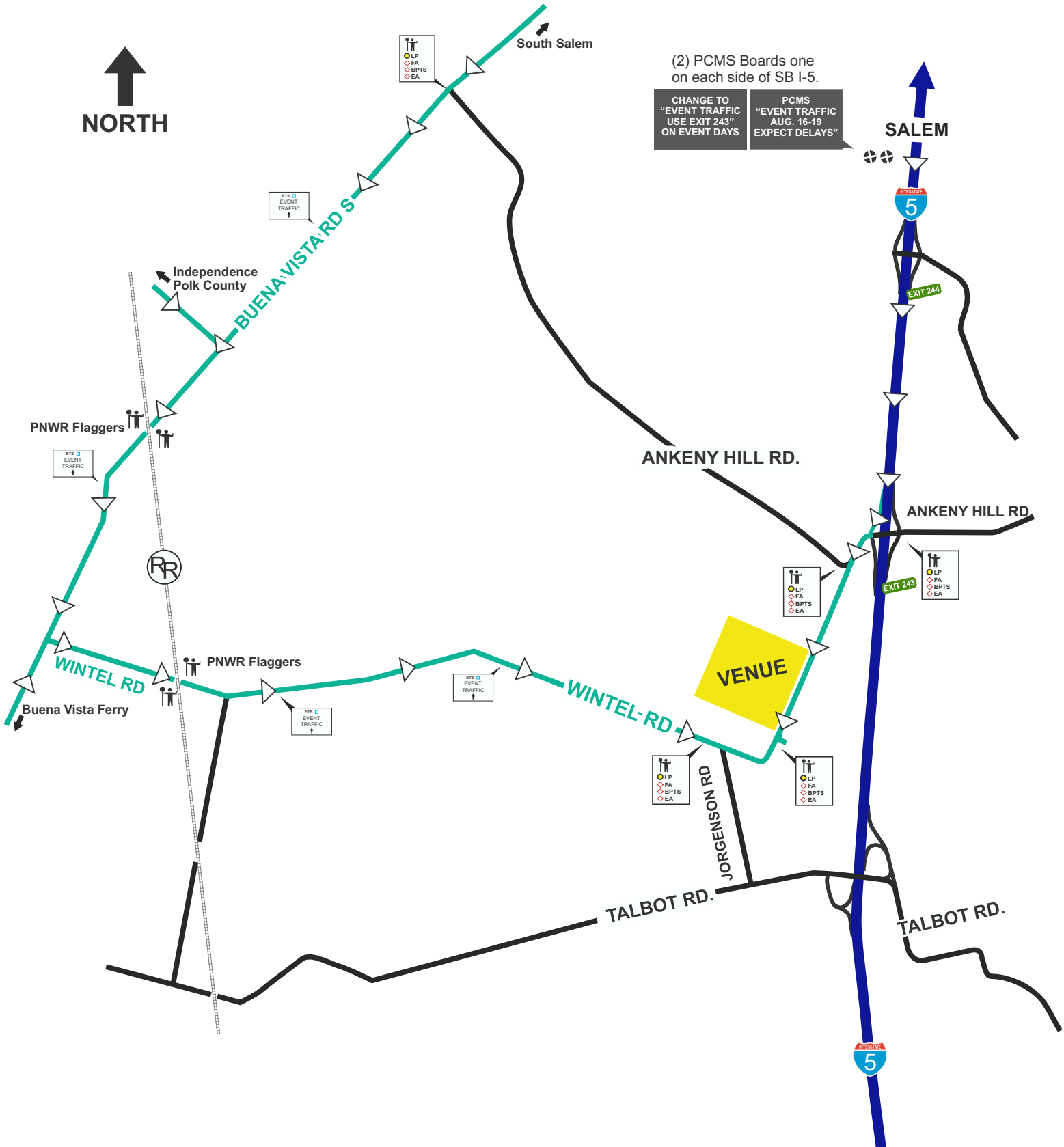
2019 Willamette Country Music Festival

Northbound Contingency Ingress Route I-5 (Exit 244)



2019 Willamette Country Music Festival

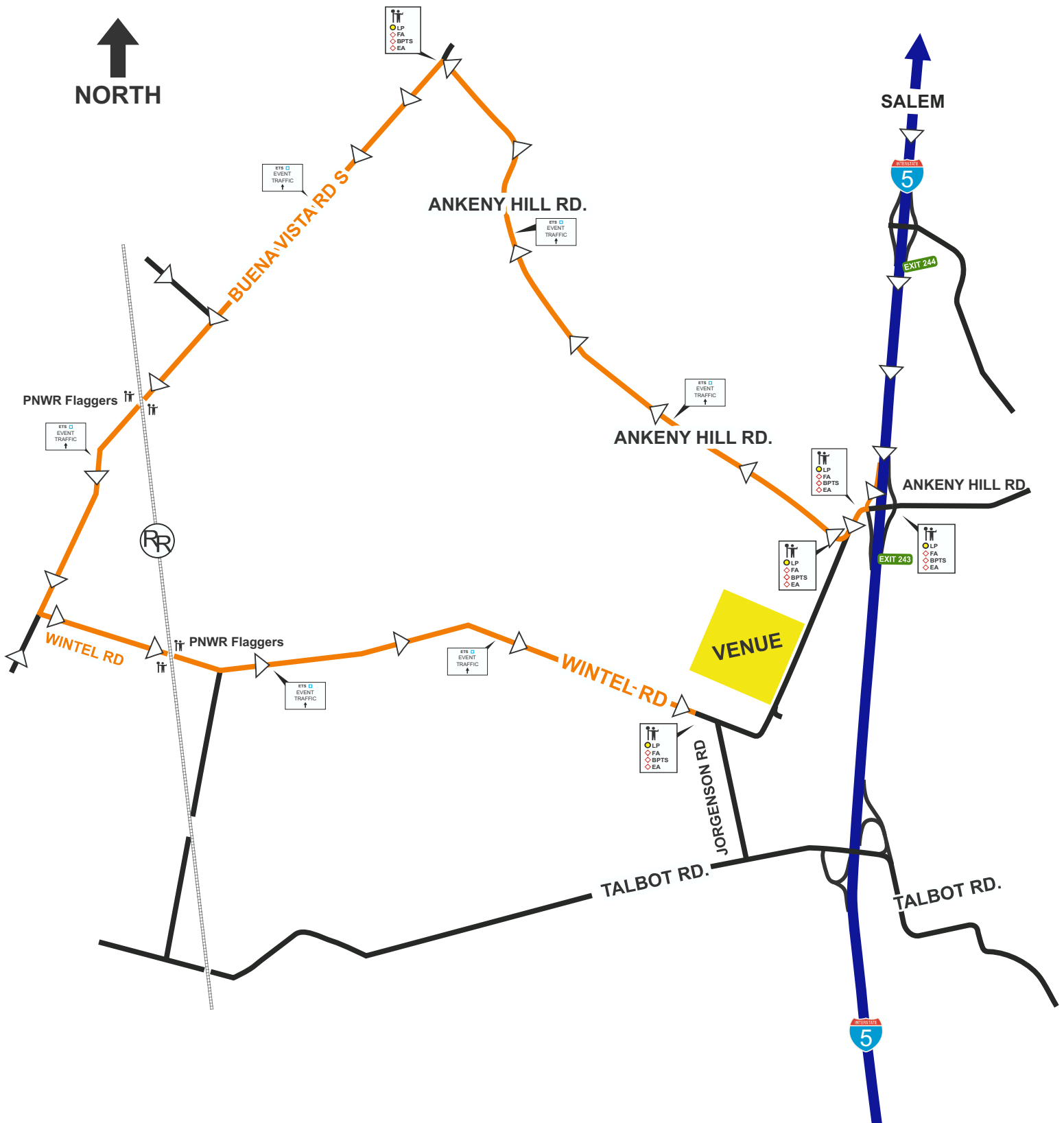
Southbound and Buena Vista Ferry Primary Ingress Route (Exit 243)



— Primary Ingress Route (SB)

2019 Willamette Country Music Festival

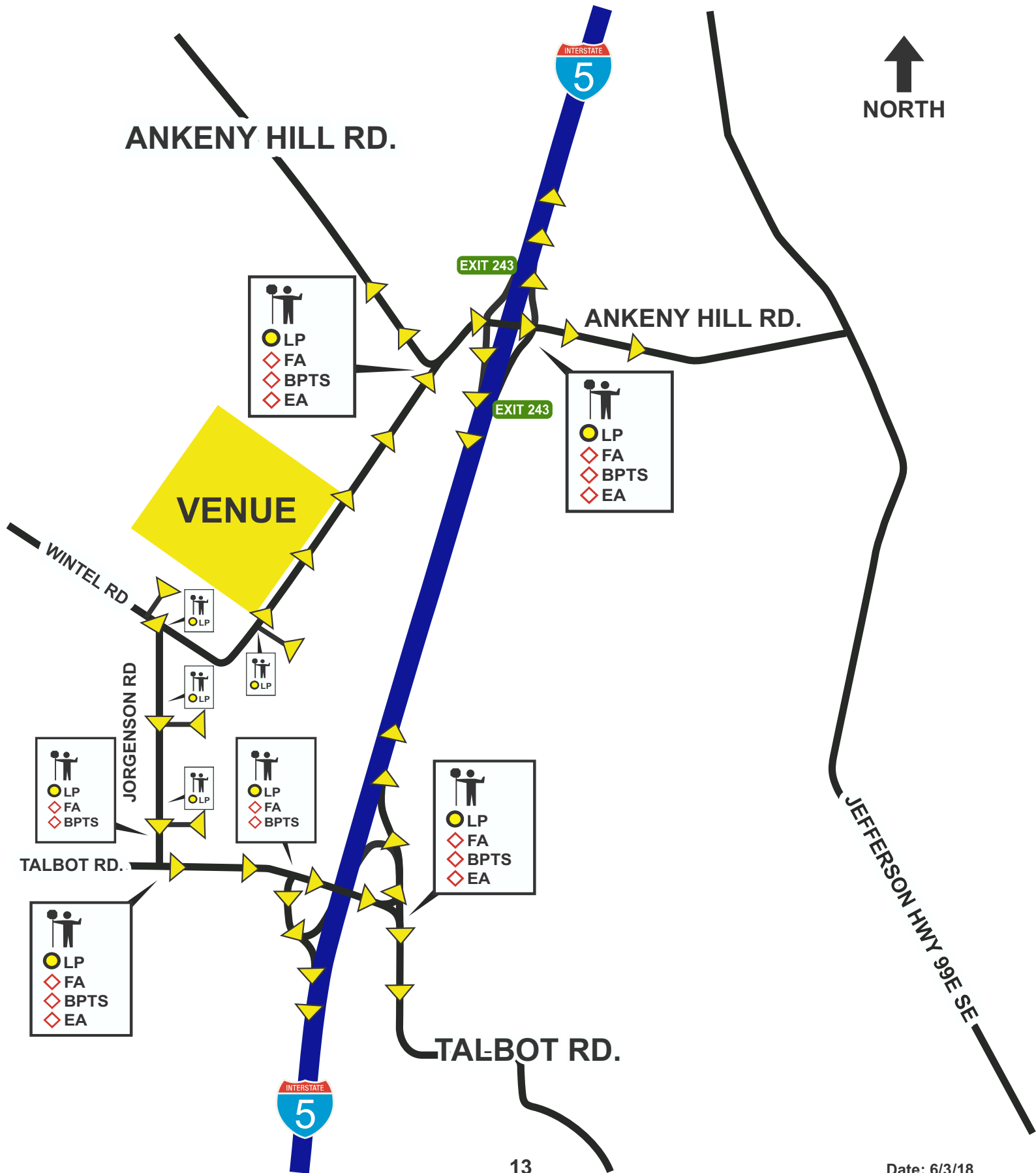
Southbound Contingency Ingress Route I-5 (Ankeny Hill Rd.)



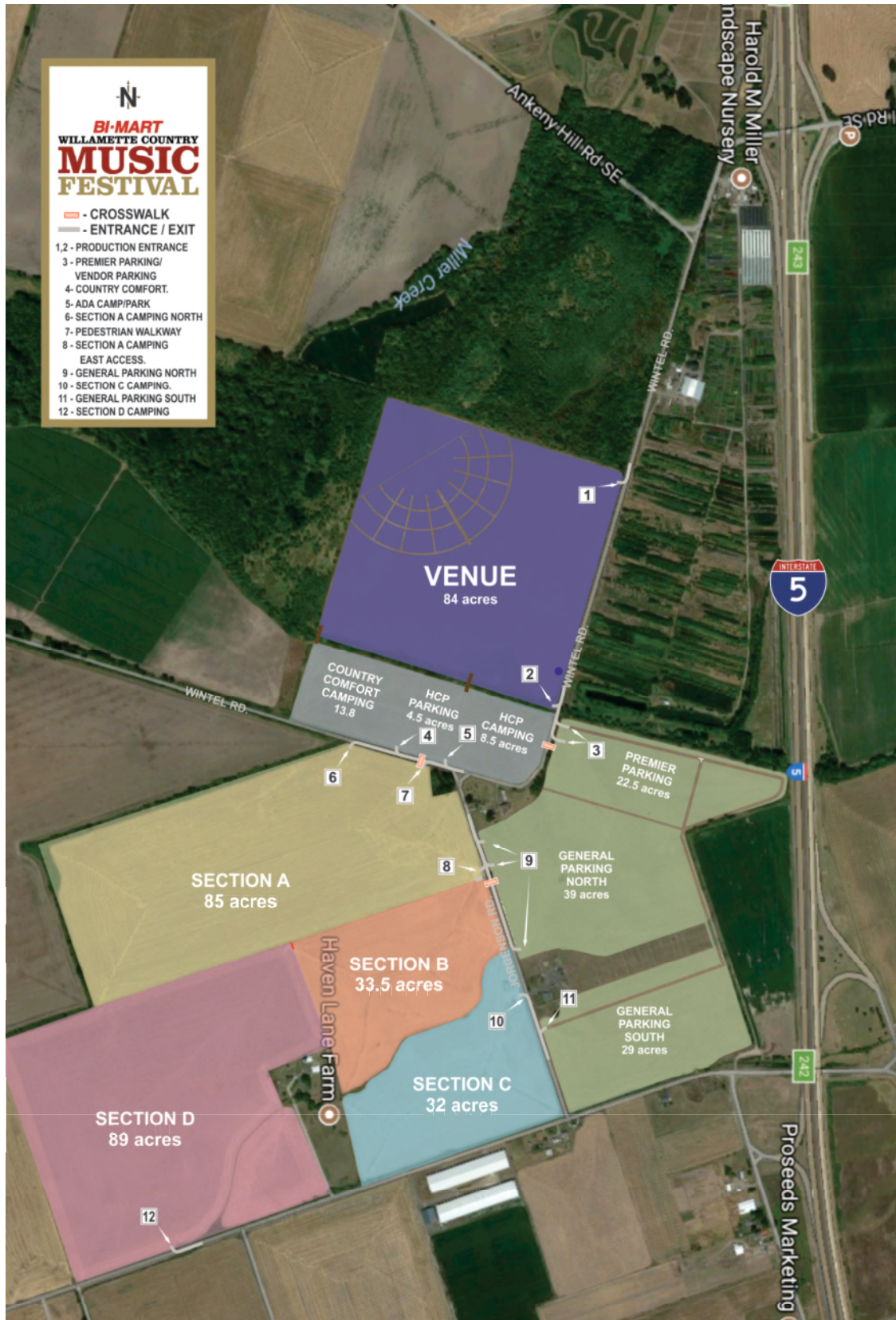
— -Contingency Ingress Route I-5 (SB)

2019 Willamette Country Music Festival

Outbound Traffic (All the Time)



2019 Willamette Country Music Festival



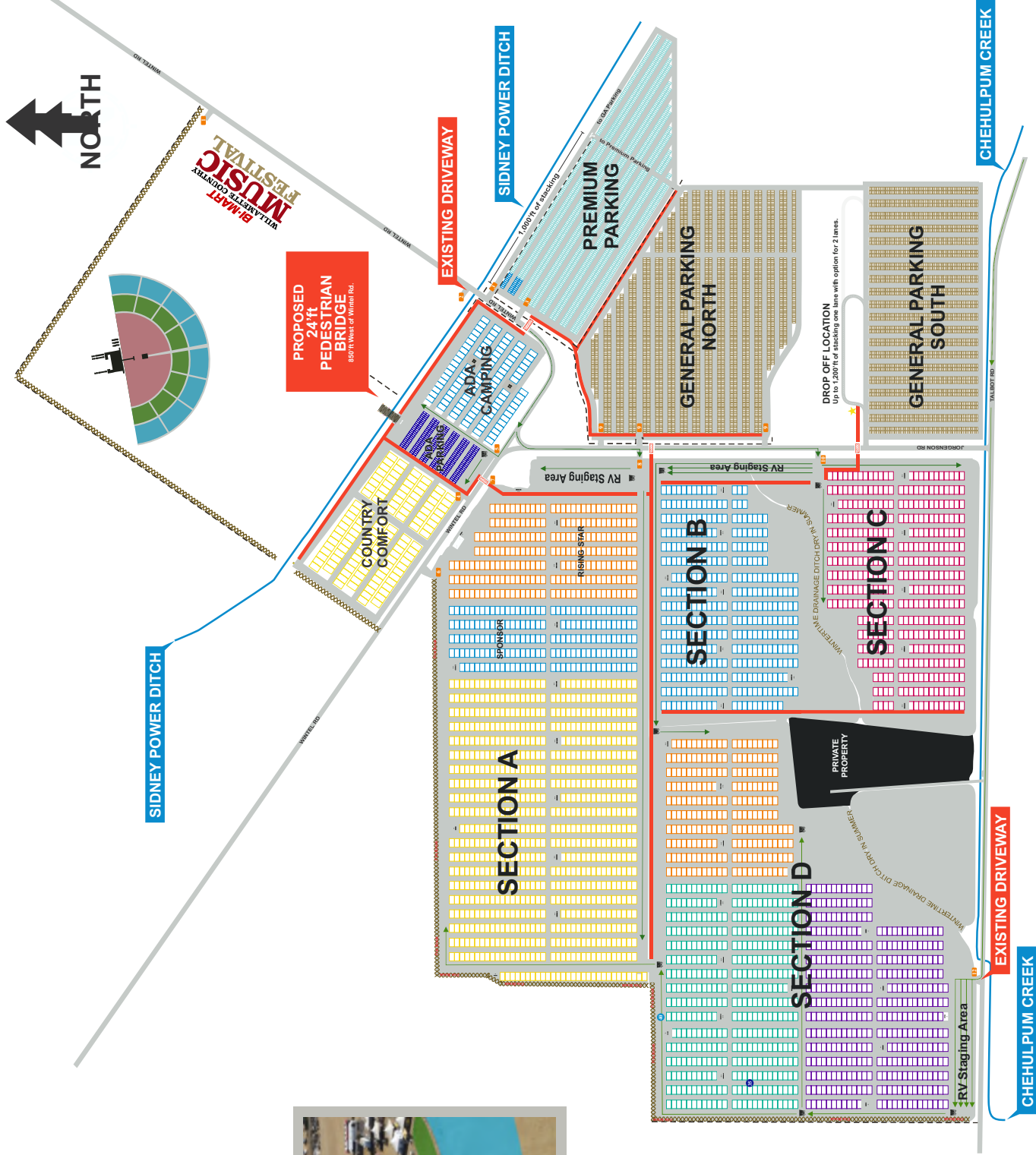
“Flaggers will be located at all driveways to the parking lots and camping sections. Flaggers and Light Plants will be located at all pedestrian crossings of the county roads”

BI-MART WILLAMETTE COUNTY MUSIC FESTIVAL



- 30' x 50' Pull Through Campsites EA
- 40' ft Perimeter Roads
- 35' ft Camping Roads
- 25' ft Fire Break
- PEDESTRIAN WALKWAY
- PEDESTRIAN CROSSWALK
- RV FLOW
- FENCING
- Ingress / Egress
- RV Guides

1,000 ft _____



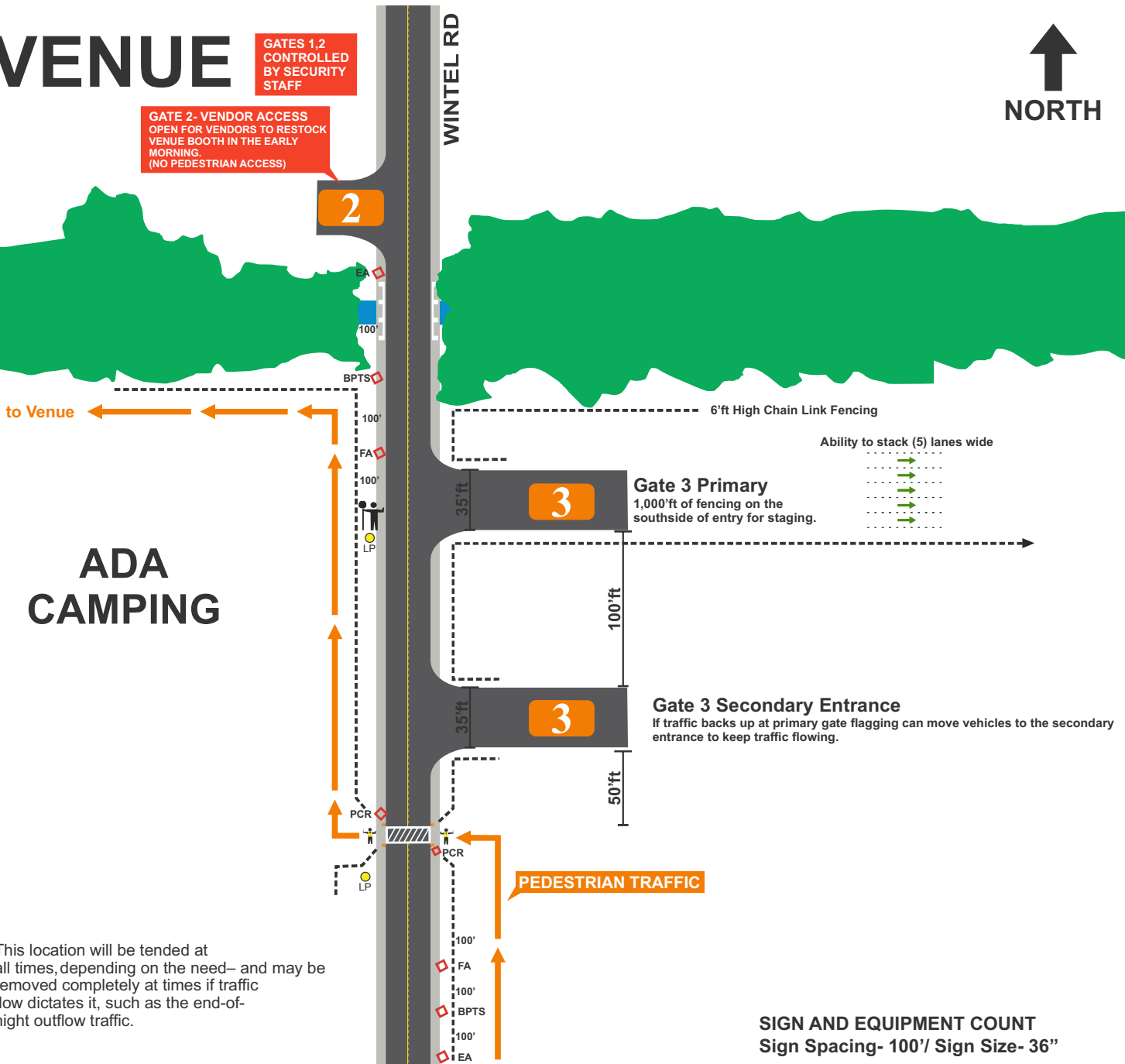
2019 Willamette Country Music Festival

Wintel Rd. / Premium Parking / Crosswalk (Gate 3)

VENUE

GATES 1,2
CONTROLLED
BY SECURITY
STAFF

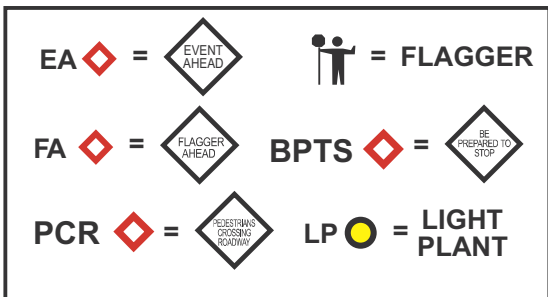
GATE 2- VENDOR ACCESS
OPEN FOR VENDORS TO RESTOCK
VENUE BOOTH IN THE EARLY
MORNING.
(NO PEDESTRIAN ACCESS)



This location will be tended at all times, depending on the need— and may be removed completely at times if traffic flow dictates it, such as the end-of-night outflow traffic.

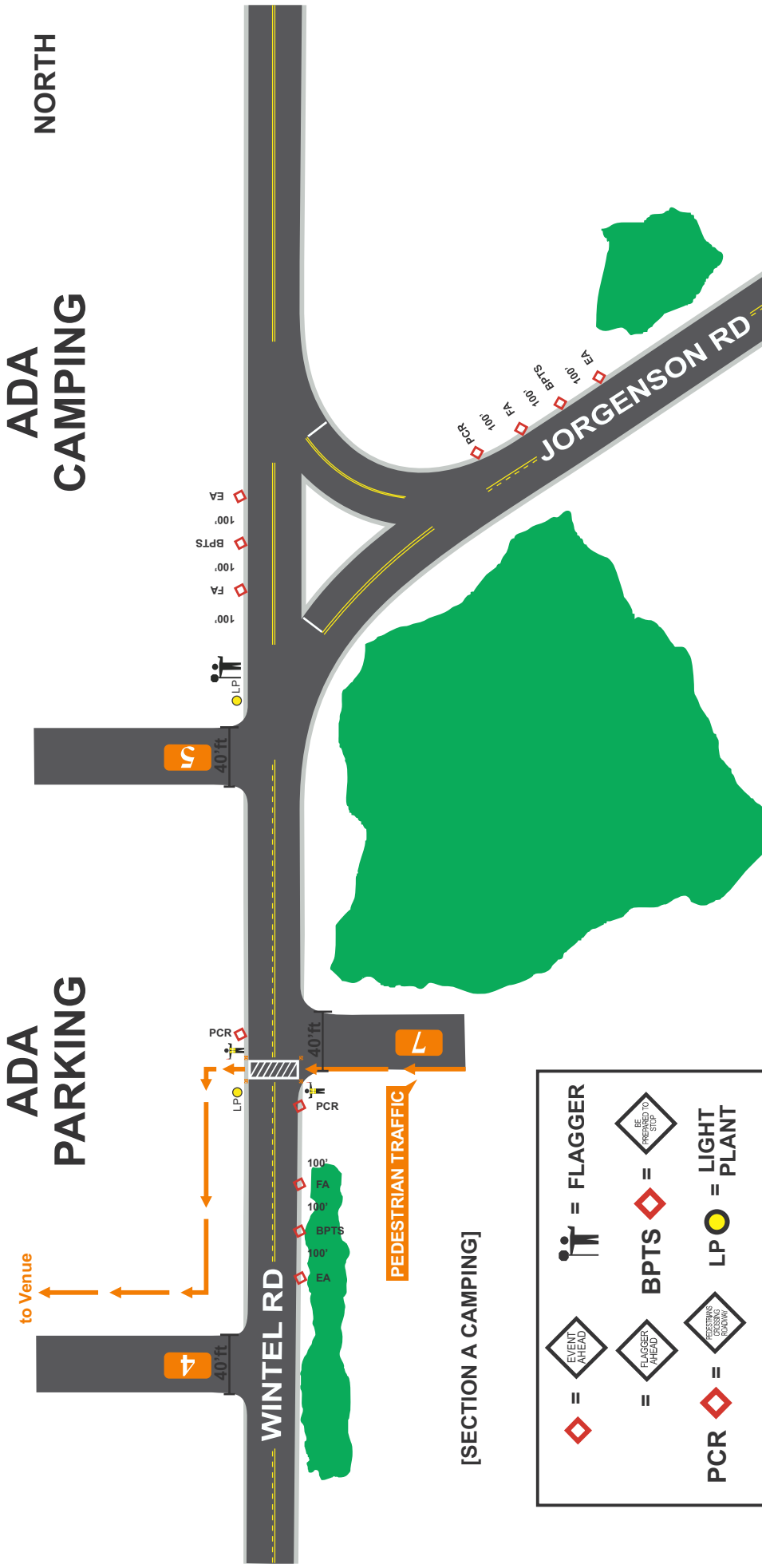
SIGN AND EQUIPMENT COUNT Sign Spacing- 100'/ Sign Size- 36"

Event Ahead (EA)	2
Be Prepared to Stop (BPTS)	2
Flagger Ahead (FA)	2
Pedestrians Crossing Roadway (PCR)	2
Light Plants	2



2019 Willamette Country Music Festival

Wintel Rd. / ADA Parking / Crosswalk (Gate 4/5)



[SECTION A CAMPING]

	=		=		=	FLAGGER
	=		=	BPTS	=	
	=		=		=	LIGHT PLANT

SIGN AND EQUIPMENT COUNT

Sign Spacing- 100'/ Sign Size- 36"

Event Ahead (EA)	3
Be Prepared to Stop (BPTS)	3
Flagger Ahead (FA)	3
Pedestrians Crossing Roadway (PCR)	3
Light Plants	2

This location will be tended at all times, depending on the need— and may be removed completely at times if traffic flow dictates it, such as the end-of-night outflow traffic.

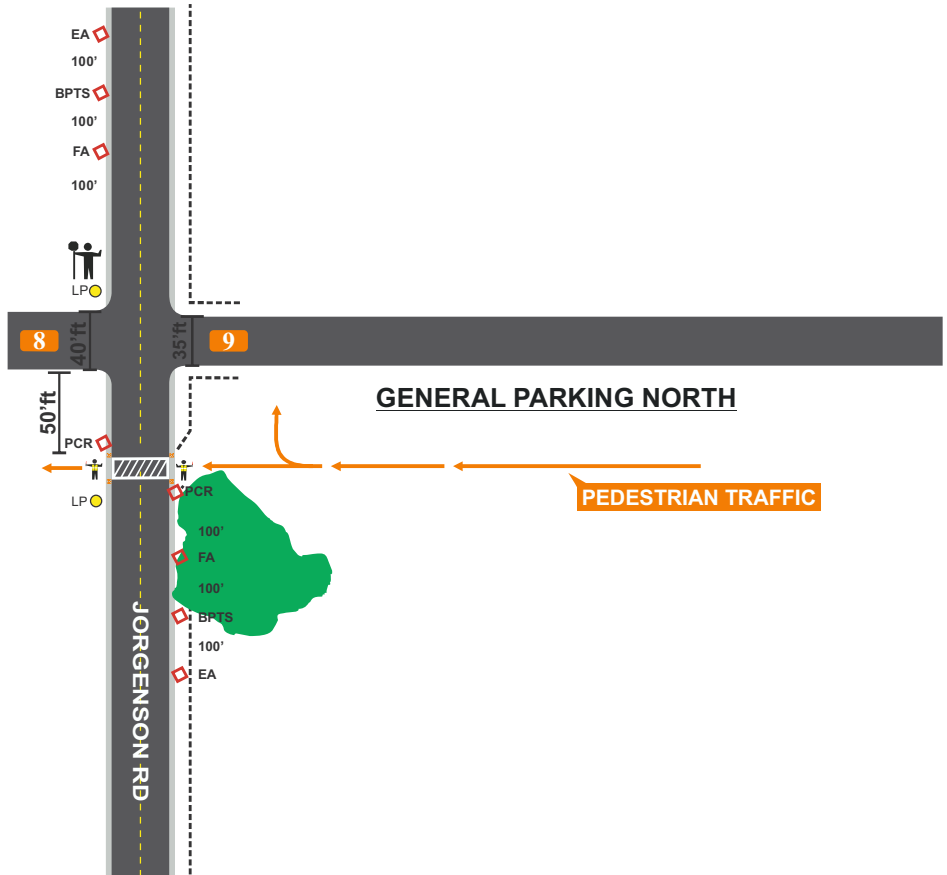
2019 Willamette Country Music Festival

Jorgenson Rd. / General Parking / Crosswalks (Gates 9/11)

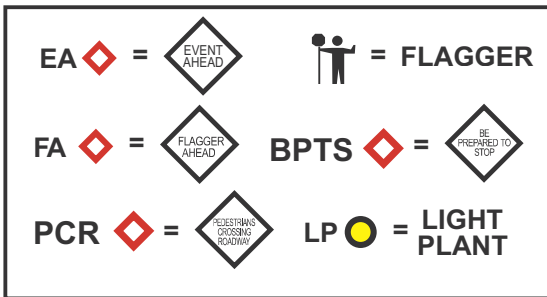
SECTION A CAMPING

SECTION B CAMPING

This location will be tended at all times, depending on the need— and may be removed completely at times if traffic flow dictates it, such as the end-of-night outflow traffic.

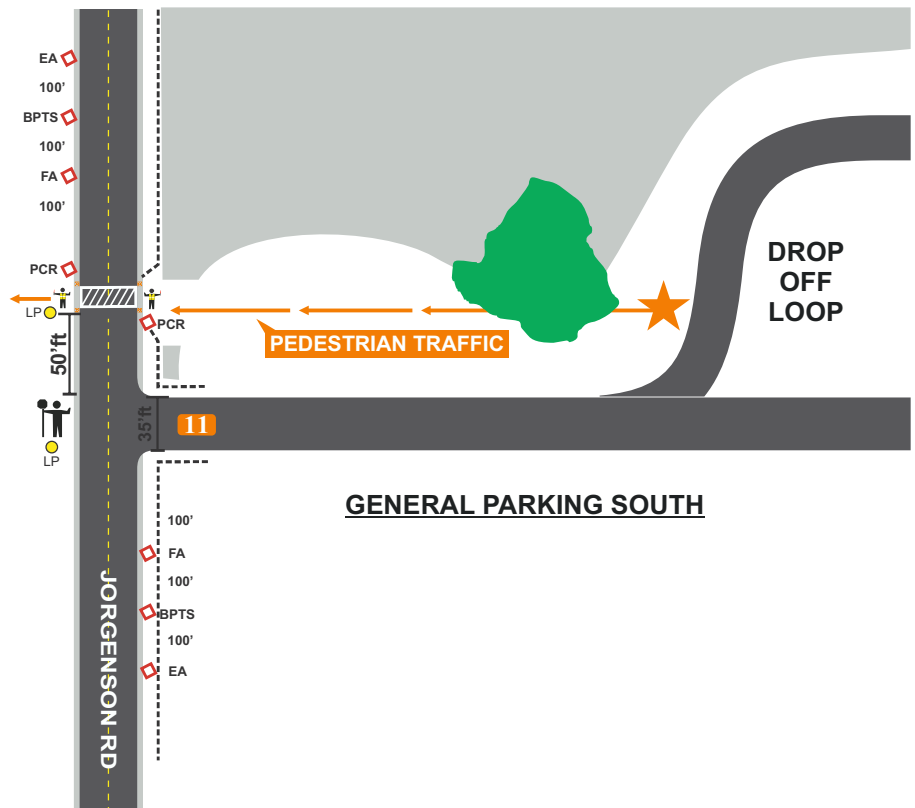


SECTION C CAMPING



SIGN AND EQUIPMENT COUNT Sign Spacing-100' / Sign Size- 36"

Event Ahead (EA)	4
Be Prepared to Stop (BPTS)	4
Flagger Ahead (FA)	4
Pedestrians Crossing Roadway (PCR)	4
Light Plants	4



2019 Willamette Country Music Festival

Advance I-5 Signing for Exit 242 Closure.



JORGENSON RD.

TALBOT RD.



EXIT 242

E	X	I	T	2	4	2	
C	L	O	S	E	D		
A	U	G	1	6	-	1	9

T	H	U	R	-	S	U	N
D	E	T	O	U	R		
3	-	7		P	M		

E	X	I	T	2	4	2	
C	L	O	S	E	D		
3	-	7		P	M		

	U	S	E				
E	X	I	T	2	4	3	

SIGN AND EQUIPMENT COUNT
Sign Spacing- 2640'ft South of Exit 242

PCMS 1

PCMS
"EVENT TRAFFIC
AUG. 16-19
EXPECT DELAYS"

CHANGE TO
"EVENT TRAFFIC
USE EXIT 243"
ON EVENT DAYS



PCMS
"EXIT 242
CLOSED
AUG 16-19"

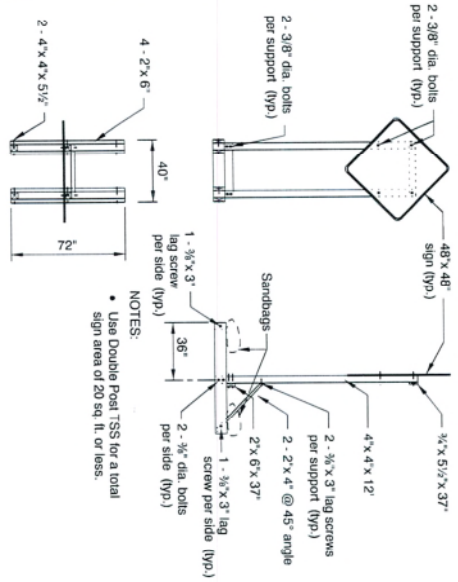
CHANGE TO
"EXIT 242
CLOSED
3-7 PM"

"THUR-SUN
DETOUR
3-7 PM"

"USE
EXIT 243"

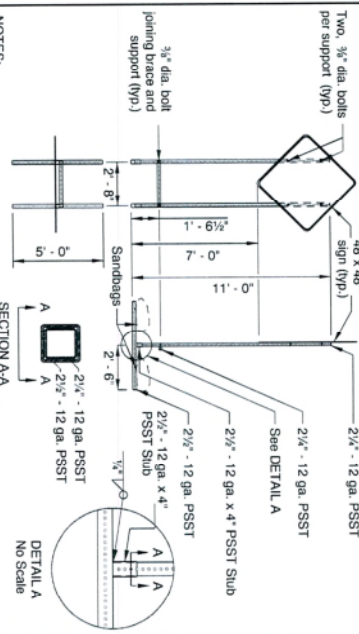
-(Placed one week prior to event.)

TALBOT RD.



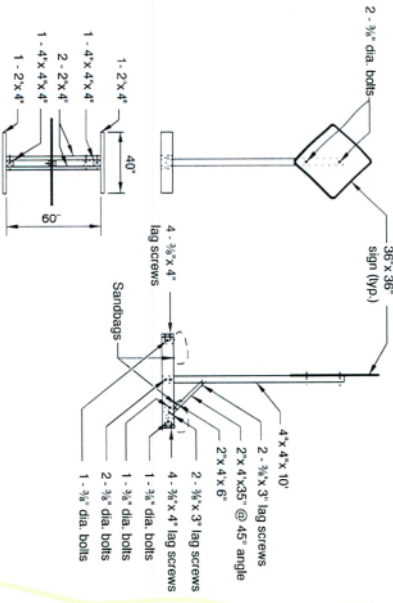
- NOTES:
- Use Double Post TSS for a total sign area of 20 sq ft. or less.

DOUBLE POST
TEMPORARY SIGN SUPPORT (TSS)



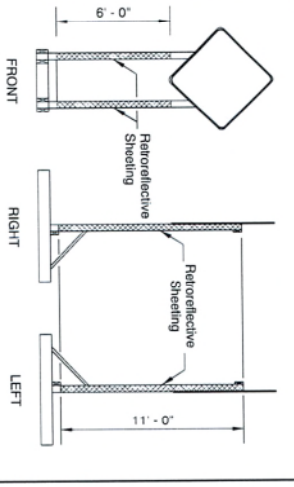
- NOTES:
- All members shall have a minimum yield stress of 50 ksi.
 - Galvanize steel according to ASTM A653 with coating designation G40. Remove galvanizing from heat affected zone and welds.
 - Do not use bolt to secure 2 1/2" x 4" PSSST sub. inside of the 2 1/2" x 12 ga. x 4" PSSST sub.
 - Weld steel according to AWS D.1.1.

PERFORATED STEEL SQUARE TUBE (PSSST)
TEMPORARY SIGN SUPPORT (TSS)

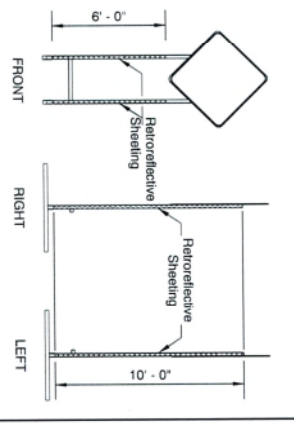


- NOTES:
- Use Single Post TSS for a total sign area of 9 sq. ft. or less.
 - Use Single Post TSS for mounting "Business Access" (CG20-11) signs. Do not mount signs on Type II or III Barricades.

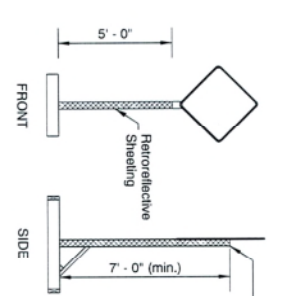
SINGLE POST
TEMPORARY SIGN SUPPORT (TSS)



DOUBLE POST
TEMPORARY SIGN SUPPORT (TSS)



PERFORATED STEEL SQUARE TUBE (PSSST)
TEMPORARY SIGN SUPPORT (TSS)



SINGLE POST
TEMPORARY SIGN SUPPORT (TSS)

- NOTES:
- Apply fluorescent orange, ANSI Type VIII or IX retroreflective sheeting to TSS posts, as shown, for all temporary signs, except "STOP" and "DO NOT ENTER". For "STOP" and "DO NOT ENTER" signs, used red ANSI Type III or IV retroreflective sheeting on the TSS posts.
 - Apply sign post retroreflectivity to each TSS post facing front, and to the left and right sides of the TSS, as shown. Use 3" wide sheeting for wood post TSSs. Use 2" wide sheeting for PSSSTSS.
 - Sheeting may be applied directly to post material, or applied to a rigid, lightweight substrate, then securely attached to the posts.

SIGN POST REFLECTIVE SHEETING PLACEMENT

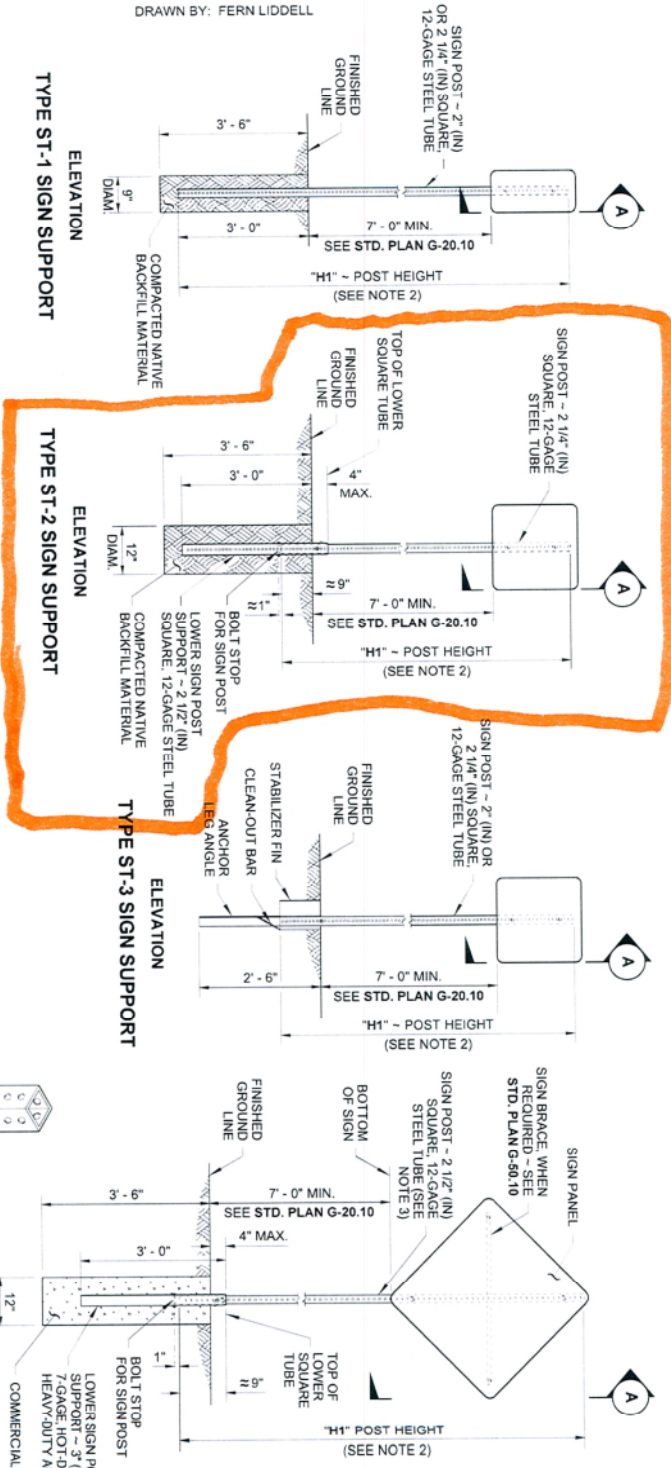
TEMPORARY SIGN SUPPORT GENERAL NOTES:

- DO NOT TIP OVER TSS AT ANY TIME.
- Do not locate TSSs in locations that block pedestrian/bicycle traffic.
- For wooden TSSs, use either Douglas Fir or Hem Fir, which is surfaced four sides (S4S) and free of heart center (F0HC).
- See "Temporary Sign Placement" detail on TM822 for sign installation heights.
- Do not place or stack ballast more than 24" above the ground.
- When sign is inconsistent with current work zone conditions, cover sign, or turn sign 90 degrees away from approaching traffic. Remove TSS from roadway when signing is not needed for more than 3 days.
- Place a minimum of 50 lbs of sandbags on each of the four TSS supports legs. (25 lb. max per bag) (min. 100 lbs per side of each TSS)

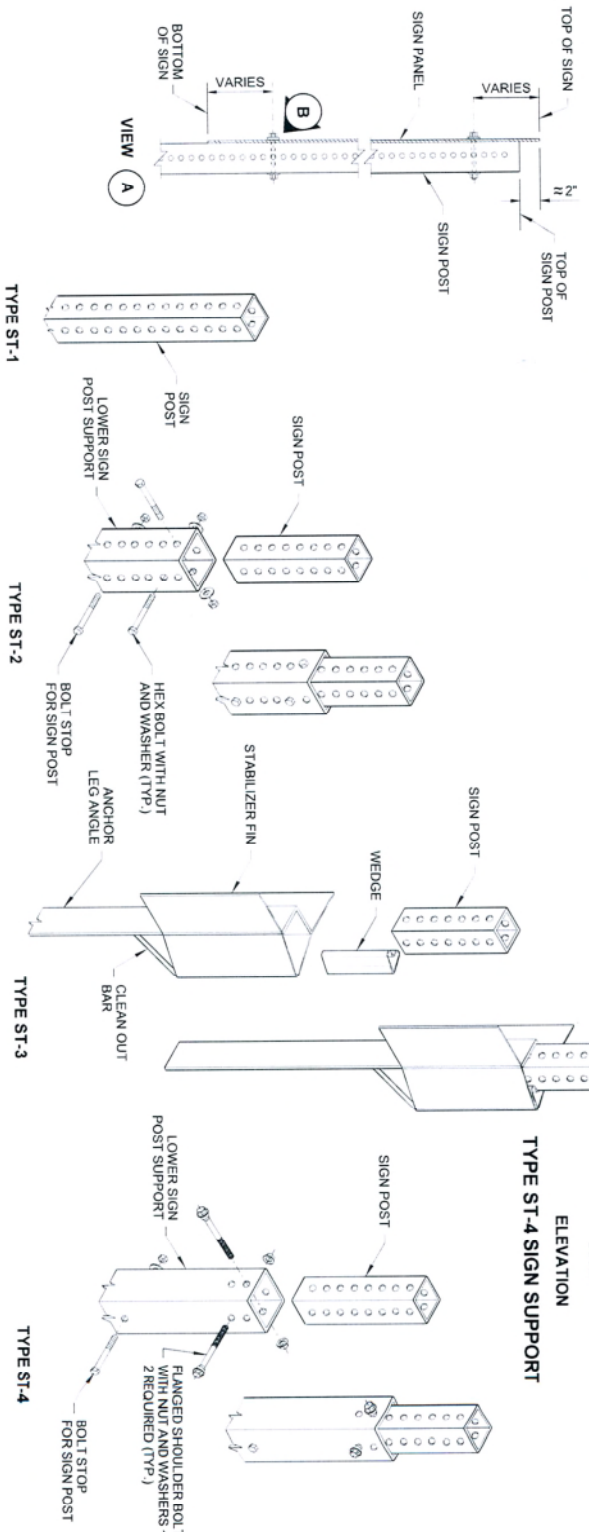
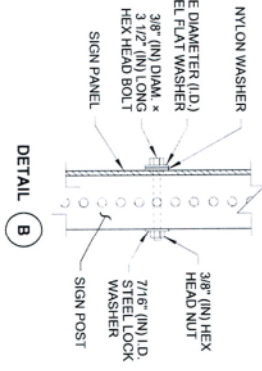
CALC. CHECKED	N/A
BASELINE REPORT DATE	01-JUL-2017
NOTE:	All material and workmanship shall be in accordance with the current Oregon Standard Specifications.
OREGON STANDARD DRAWINGS	
TEMPORARY SIGN SUPPORTS	
DATE	2018
REVISION DESCRIPTION	

Effective Date: June 1, 2018 - November 30, 2018

TM821



- NOTES**
- Dimensions for the parts used to assemble the base connections are intentionally not shown. Base connections are patented, manufactured products that are in compliance with NCHRP 350 crash test criteria. The base connection details are shown on this plan only to illustrate how the parts are assembled.
 - For "H1", refer to the Sign Specification Sheet in the Contract.
 - A 2" (in) post with a 2 1/4" (in) PSSST anchor or a 2 1/4" (in) post with a 2 1/2" (in) PSSST anchor may be substituted. See Contract Plans.
 - Perforated square steel post shall meet the requirements of **Standard Specification 9-06**.
 - Use only base connection manufacturer supplied hardware that meets the requirements of **Standard Specifications 9-06** and **9-28**.



STEEL SIGN SUPPORT
TYPES ST-1 - ST-4
INSTALLATION DETAILS
STANDARD PLAN G-24.50-04

SHEET 1 OF 1 SHEET

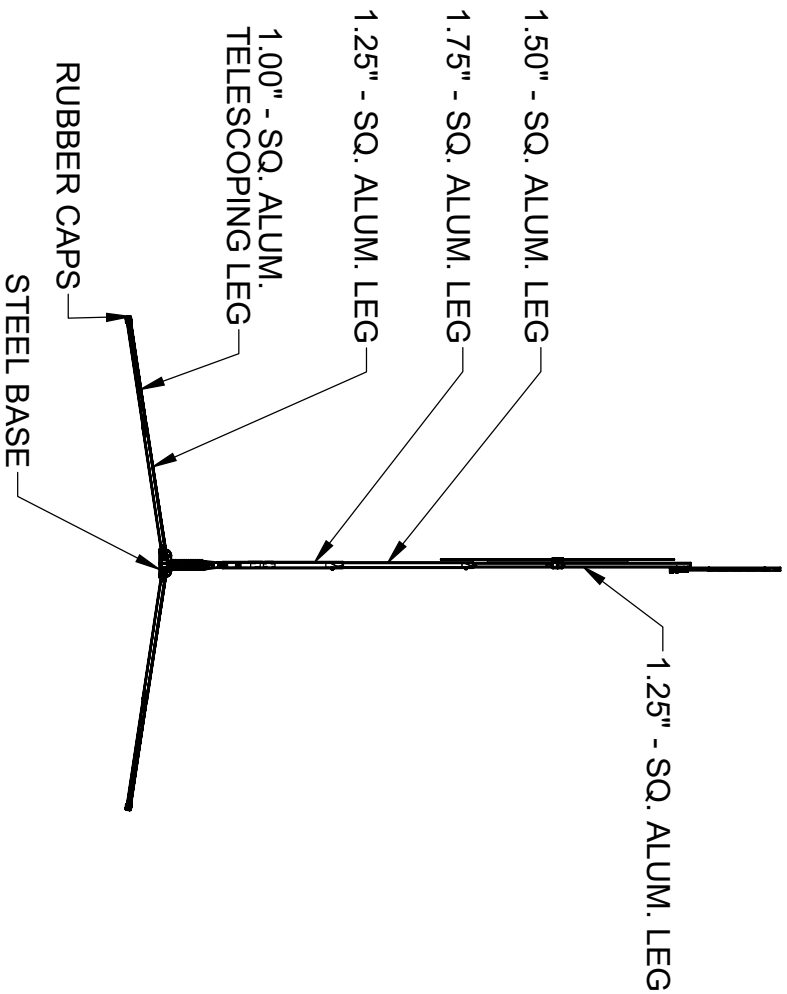
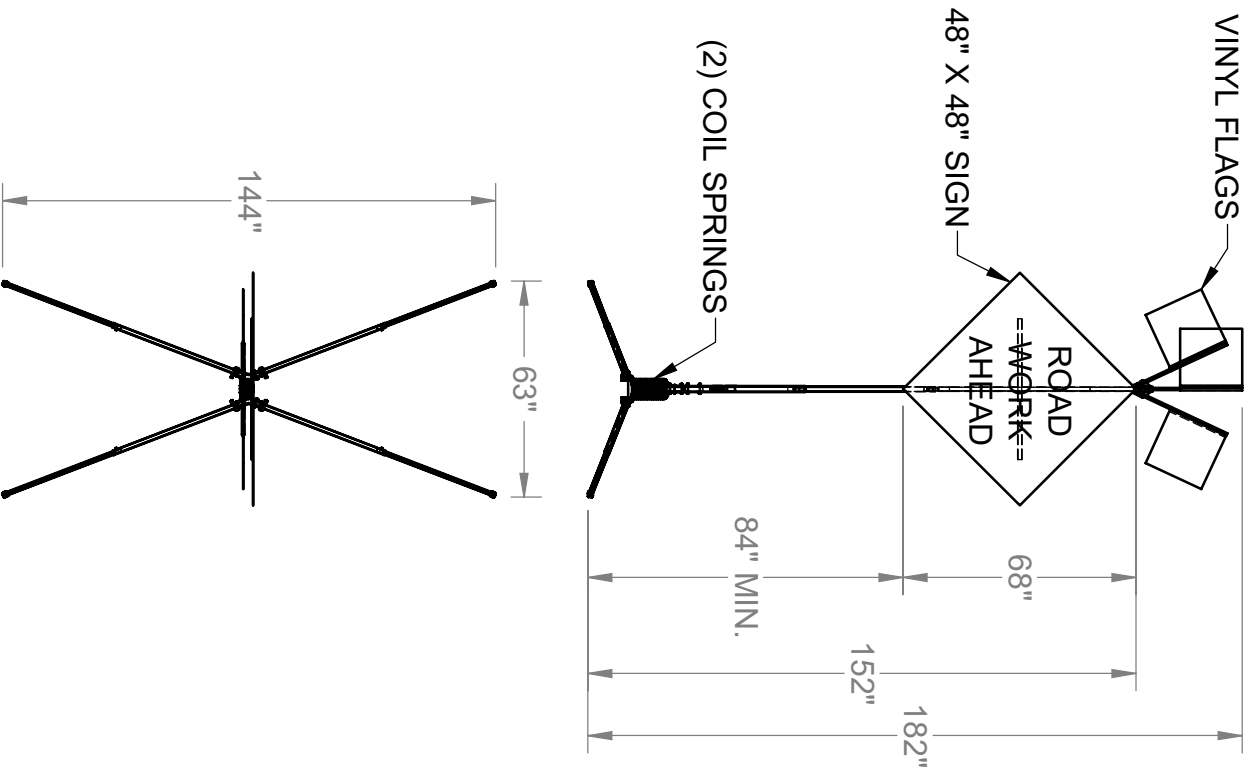
JOHN C. NIGHT
 STATE OF WASHINGTON
 PROFESSIONAL ENGINEER
 No. 29115
 Exp. 07/31/2021

APPROVED FOR PUBLICATION

Christine Hill
 STATE ENGINEER
 Jan 11 2017 1:31 PM

Washington State Department of Transportation

4884KET SCHEMATIC DRAWING



4884KET WEIGHT
SIGN STAND ONLY 48.0 lbs.



MDI Traffic Control Products, 38271 West 12 Mile Road, Farmington Hills, MI 48331-3041 800-521-6776