



Gonorrhea

Background Information:

Gonorrhea is a Sexually Transmitted Infection (STI) caused by a bacteria. It can cause infections in the genitals, rectum, and throat.

Gonorrhea Symptoms:

In men: A burning sensation when urinating; white, yellow, or green discharge from the penis; painful or swollen testicles.

In women: Painful or burning sensation when urinating; increased vaginal discharge; vaginal bleeding between periods

Treatment:

Gonorrhea is treated using two separate antibiotics.

Who is at risk?:

- Anyone engaging in any kind of sexual intercourse including oral or anal sex
- Men who have sex with men (MSM)
- People with multiple sex partners
- People who do not use protection (condoms) during sex
- People who exchange sex for drugs or money
- HIV positive individuals
- IV drug users
- Pregnant women
- People under the age of 25

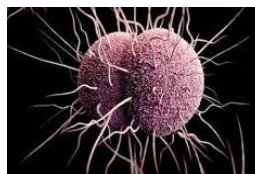
Recommendations:

Individuals Can- Limit your risks: use condoms every time you have sex, limit your number of sex partners, abstain from sex.

Getting tested: once a year is recommended, if you are in a high risk group it might be necessary to get tested more often.

Providers Can- Offer your patients gonorrhea screenings if they are in high risk groups.

Parents Can- Discuss safe sexual practices with their children.



Definitions:

Complications:

Pelvic Inflammatory Disease (PID):

Can cause permanent damage to your reproductive system and lead to long-term pelvic pain.

Ectopic

Pregnancy:

Pregnancy outside of the uterus. This is a serious complication for pregnancy.

Epididymitis:

In men untreated gonorrhea infection can cause pain or swelling in the testicles, accompanied by a fever.

Infertility:

Although uncommon untreated infection can prevent men and women from having children in the future.

Other:

In rare cases infection may spread to the blood or joints which can be life-threatening.



OREGON

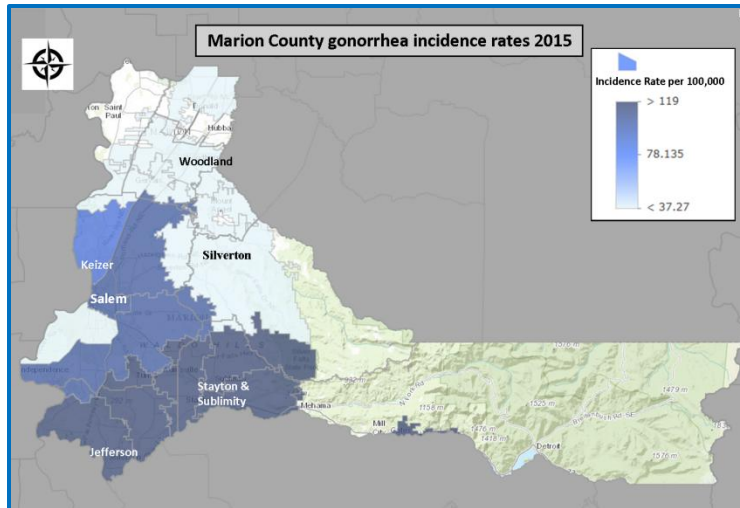
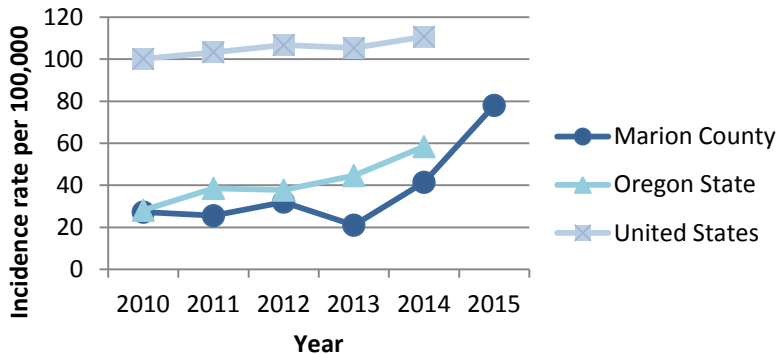


Gonorrhea in Marion County:

Marion County has experienced 186.7% increase in the incidence of gonorrhea in the last 5 years. Most Marion County gonorrhea cases occur in individuals under the age of 25.

Gonorrhea incidence rate,

Gonorrhea incidence rates, 2010-2015



Resources/ Contact Info:

If you would like further information about the Marion County Public Health Division STI services please visit our website: <http://www.co.marion.or.us/HLT/PH/Pages/sti.aspx>

If you would like to reach the Marion County Public Health Department during office hours, please call: 503-588-5342

If you need to report a communicable disease or public health emergency please call: 503-588-5621

Please like us on Facebook and follow us on Twitter for the most updated information about important events in our county.

What is Marion County Public Health Doing?:

Each time a medical provider suspects or confirms that an individual has gonorrhea, the case must be reported to the Marion County Public Health Division communicable disease (CD) team within one business day. The CD team follows up with the individual to ensure he/she receives treatment and finds, tests, and treats (or refers for testing or treatment) all of the people who may have had sexual contact with that individual. To make sure the providers in our county know the reporting requirements, our public health division staff are available to meet with community partners and healthcare providers.